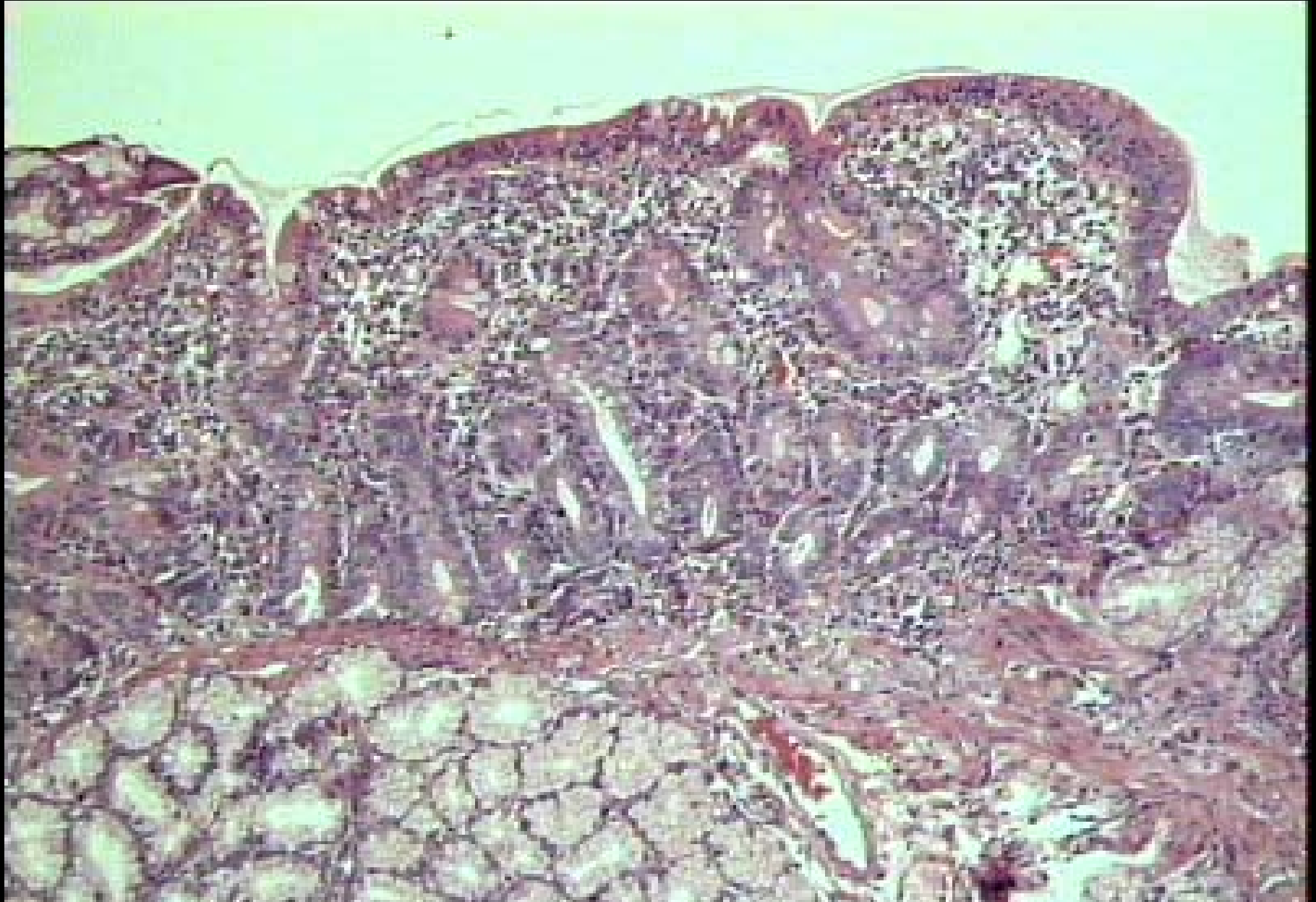


# *HDF Case 991754*

- 24 yo female
- Complaint: diarrhea, flatulence, weight loss, and fatigue.
- Endoscopic biopsy of duodenum.



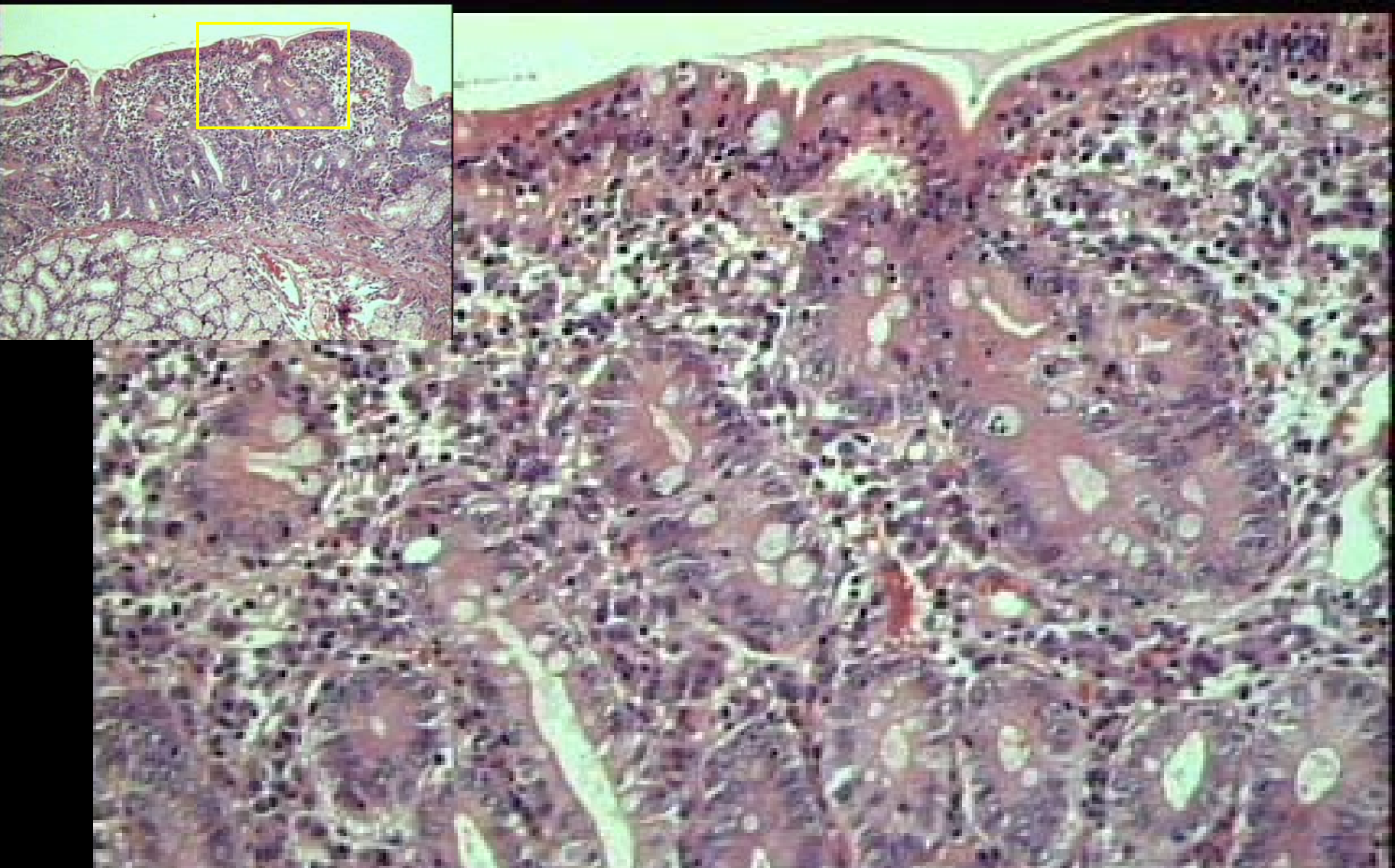


Low power: Flattened duodenal mucosa, elongated regenerative crypts.

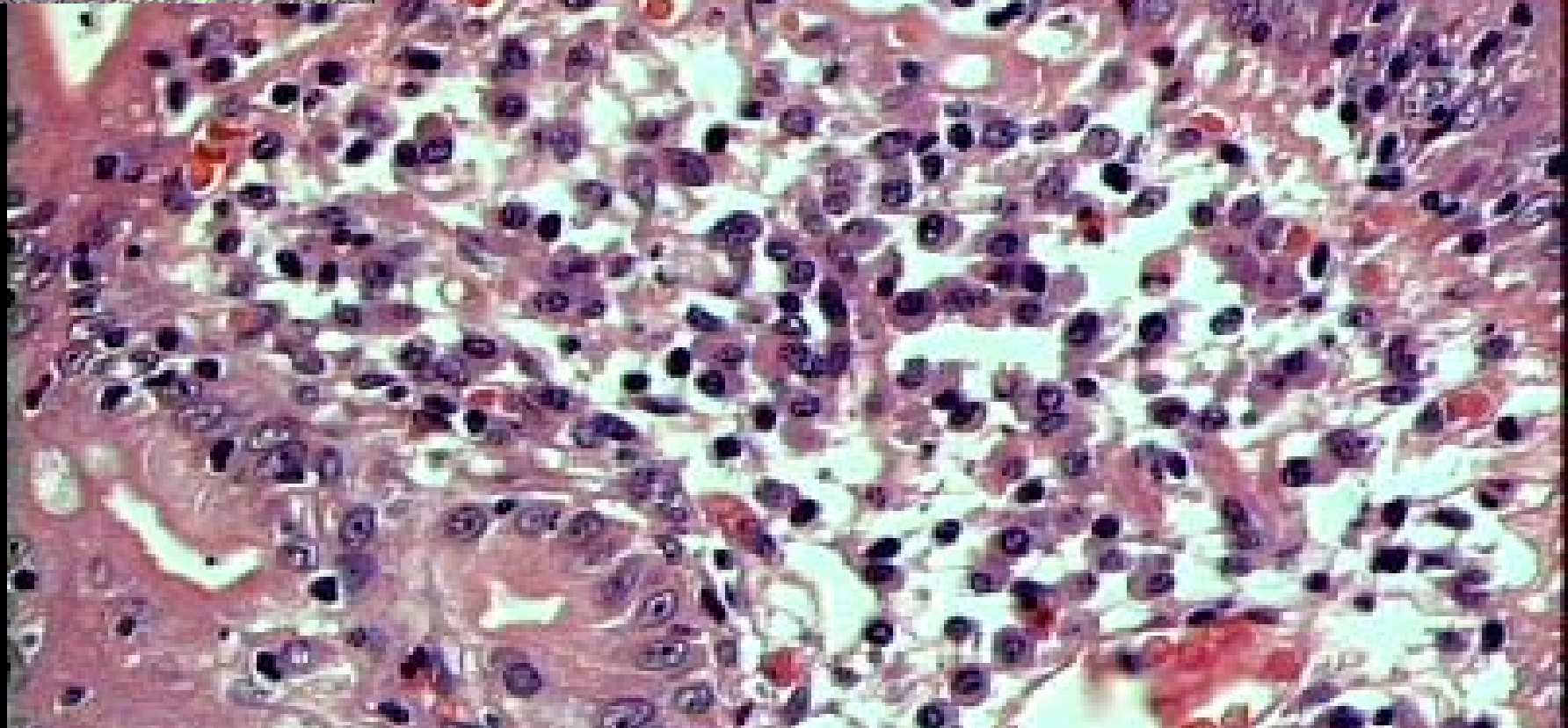
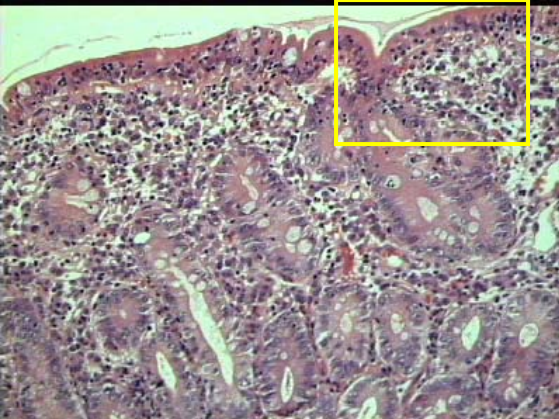
MAIN MENU



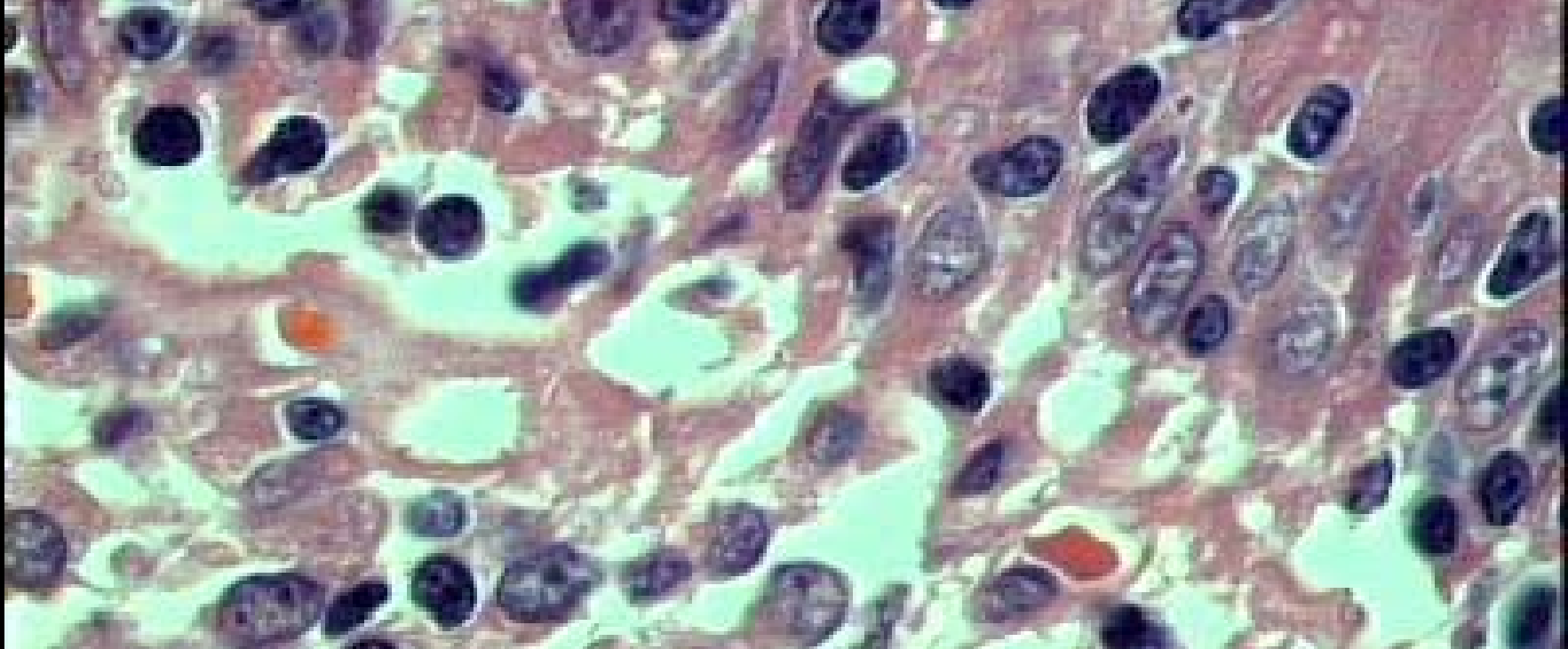
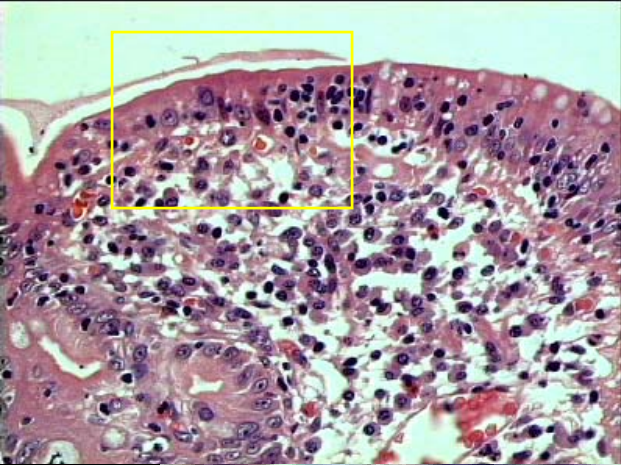
QUIT



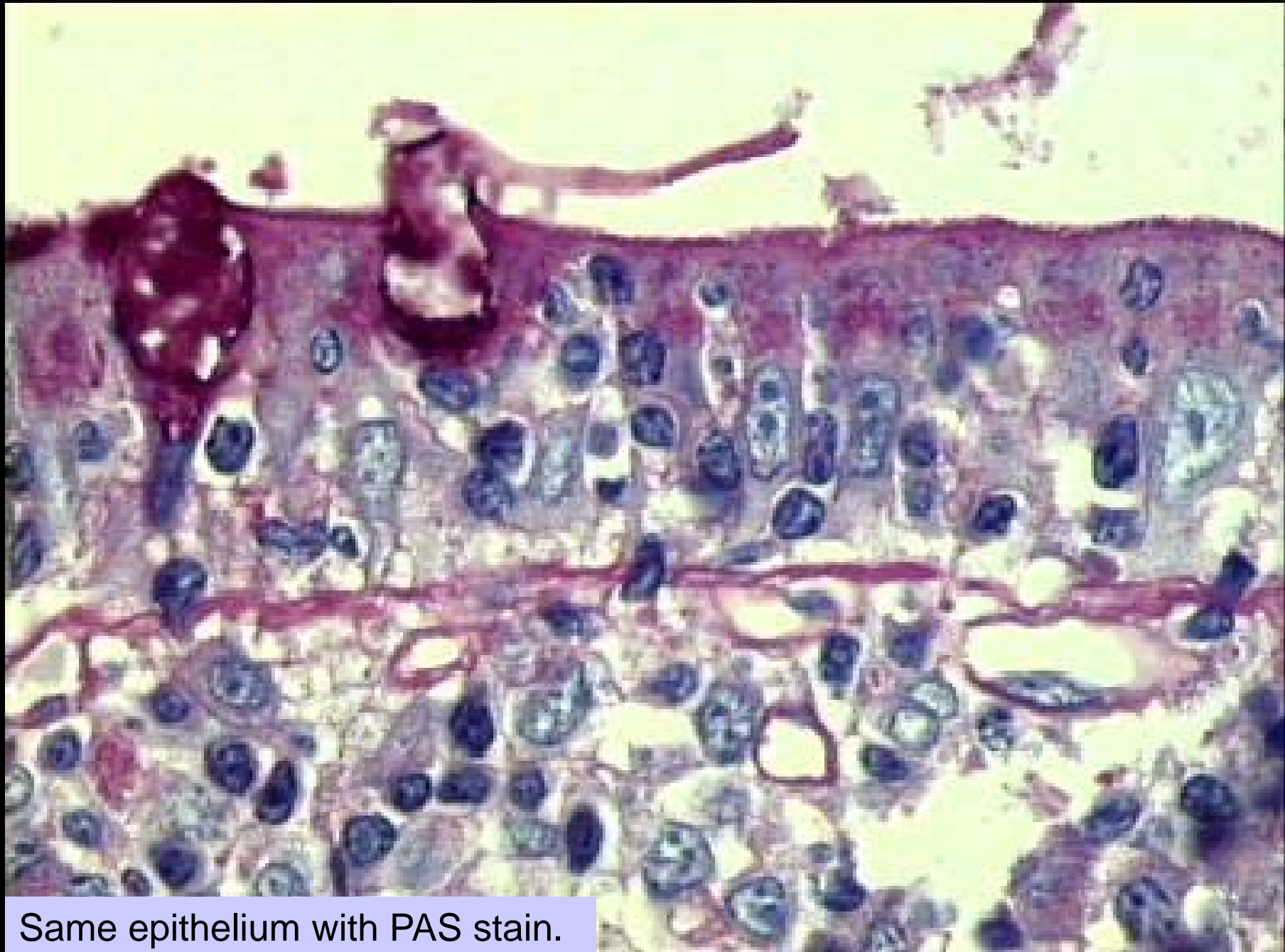
Medium power : Crypts are surrounded a lamina propria showing a moderate leucocytic infiltrate.



Surface epithelium damage and leucocytic infiltration of the lamina propria



Close up shows intraepithelial lymphocytes are greatly increased, with vacuolar changes of the enterocytes.



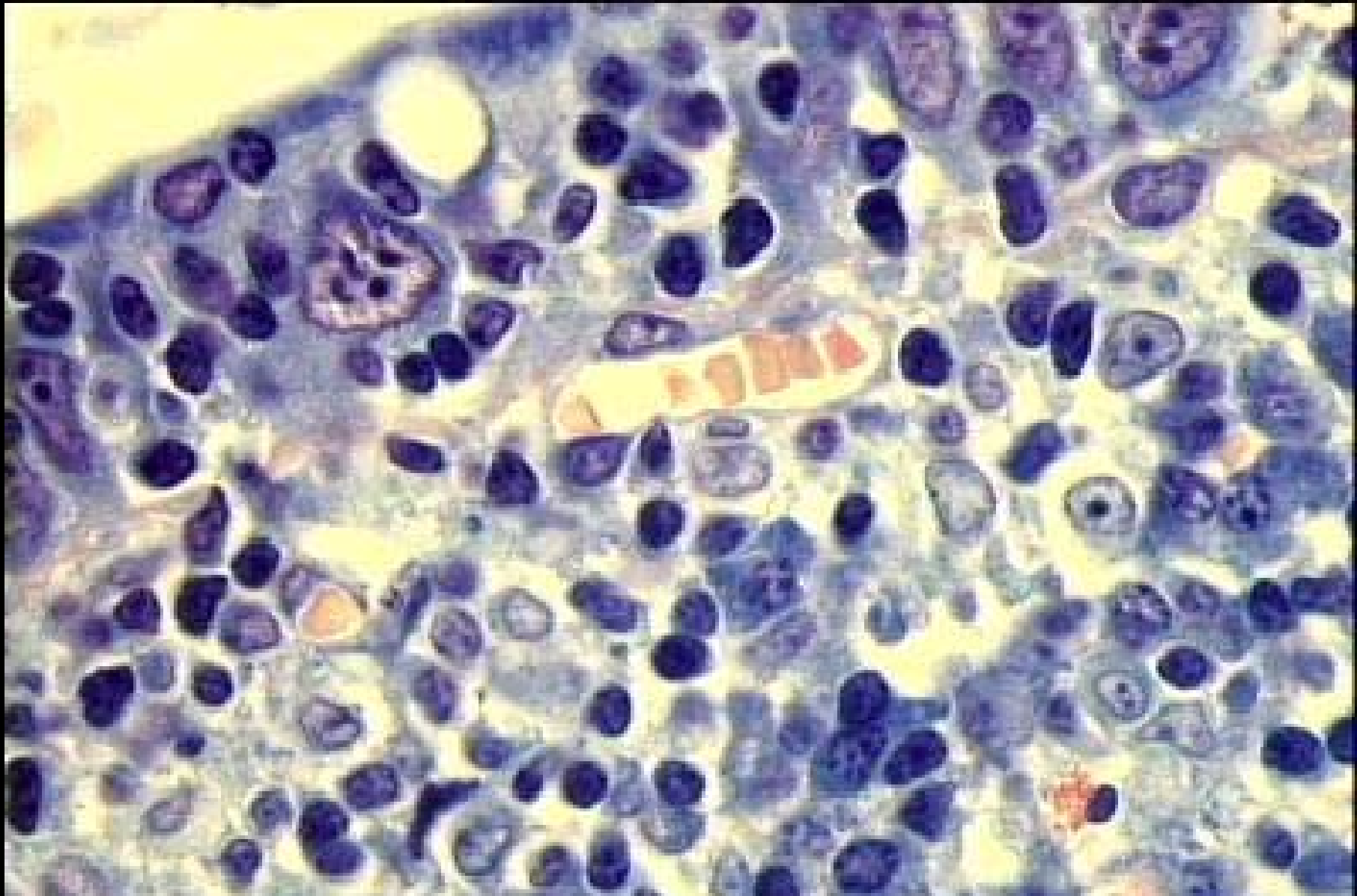
Same epithelium with PAS stain.

MAIN MENU



QUIT



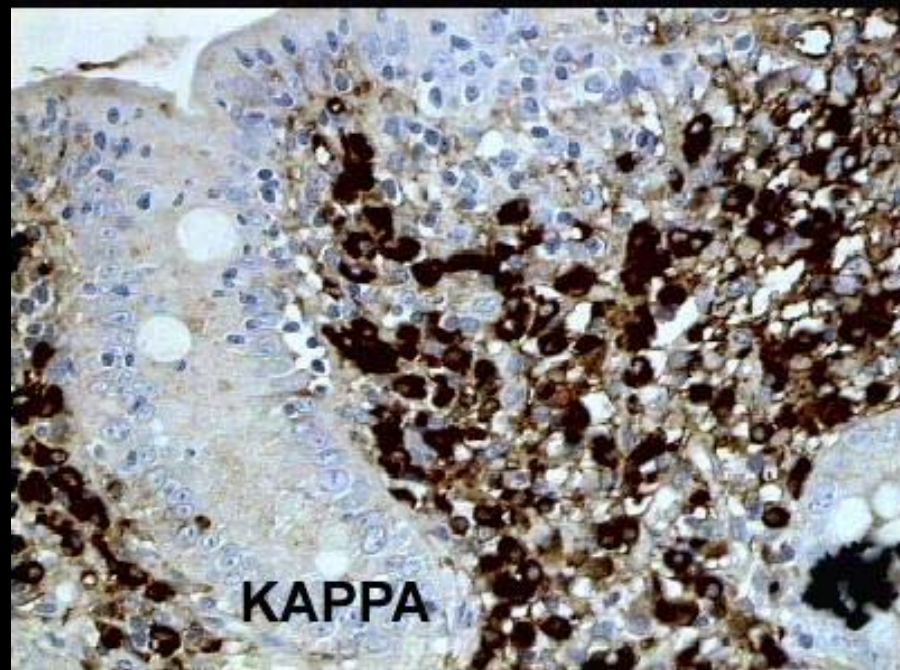
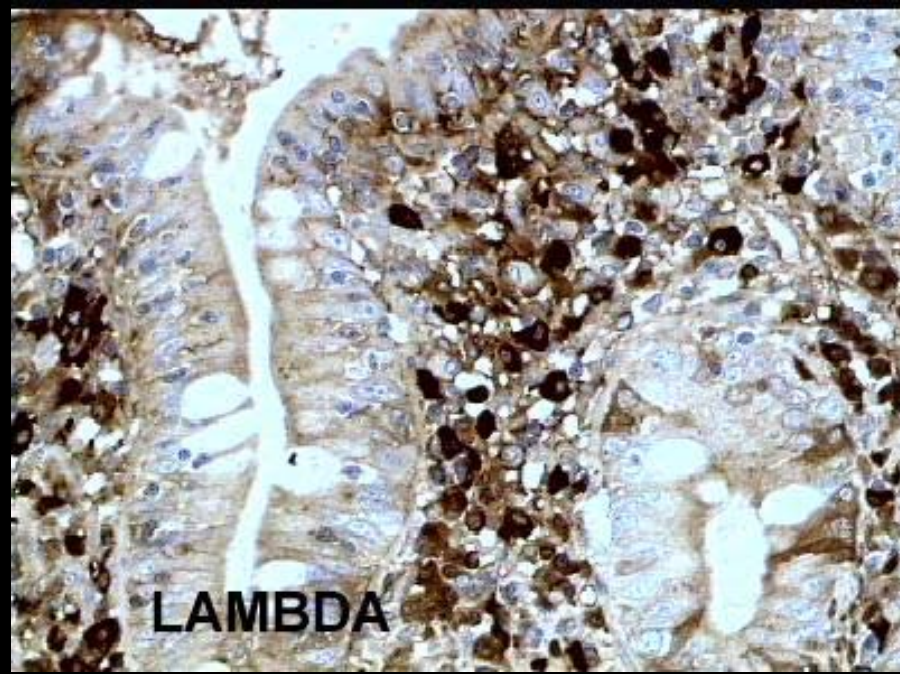
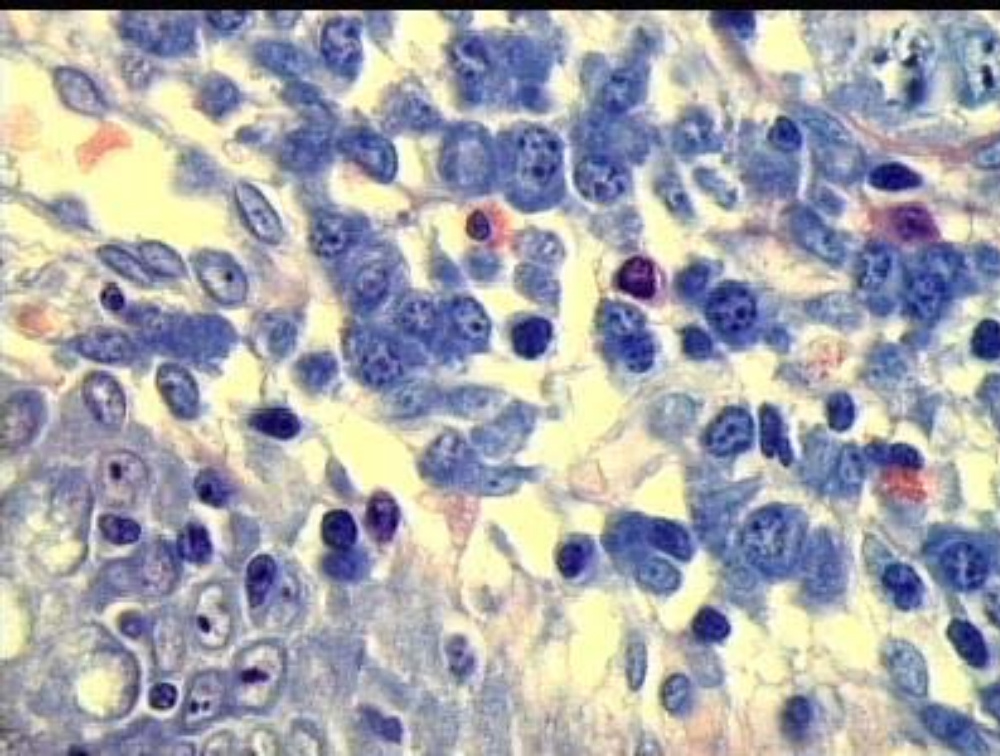


Giemsa Stain demonstrate details of the leucocytic infiltrate, in the epithelium and the lamina propria.

MAIN MENU

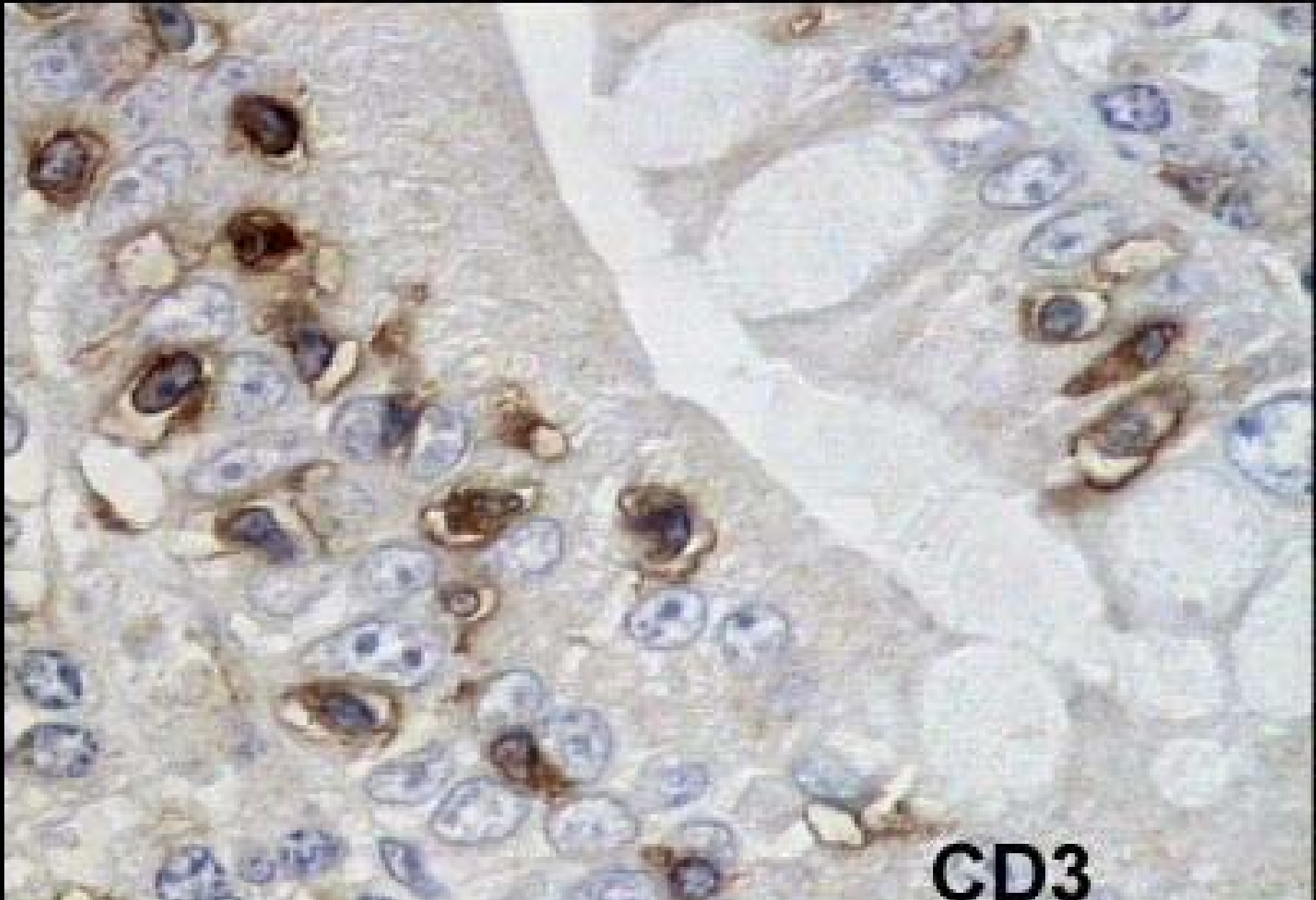


QUIT



The plasma cells in the lamina propria are polyclonal. Immunohistochemistry for Lambda and Kappa light chains.





**CD3**

The intraepithelial lymphocytes express T-cell markers..

MAIN MENU



QUIT

# Diagnosis:

- Total atrophy of the duodenal mucosa consistent with a celiac disease.

