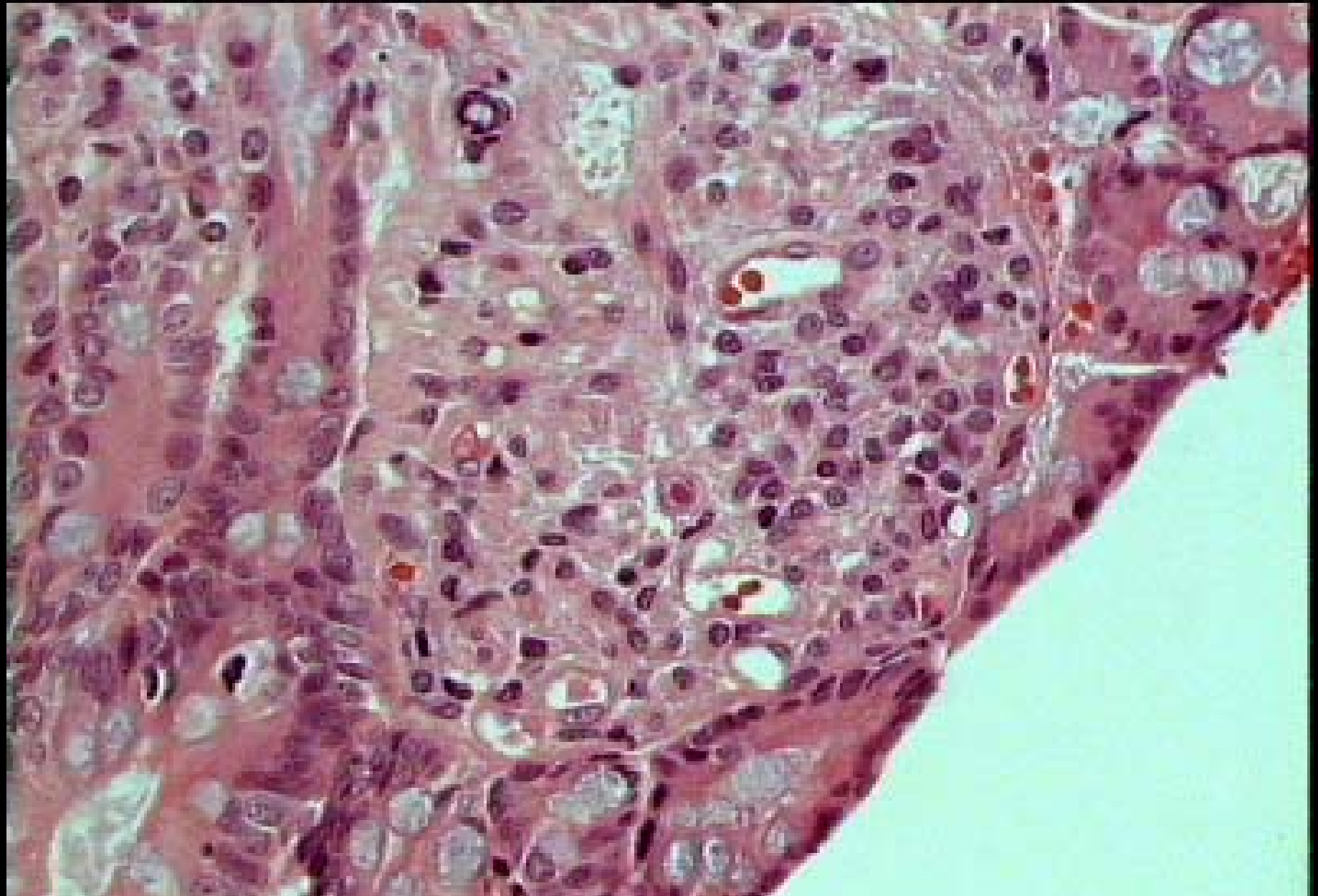


HDF Case 990390

- 27 yo male, known HIV positive, complaining of ulcer-type symptoms, and bleeding.
- Biopsy of duodenum.



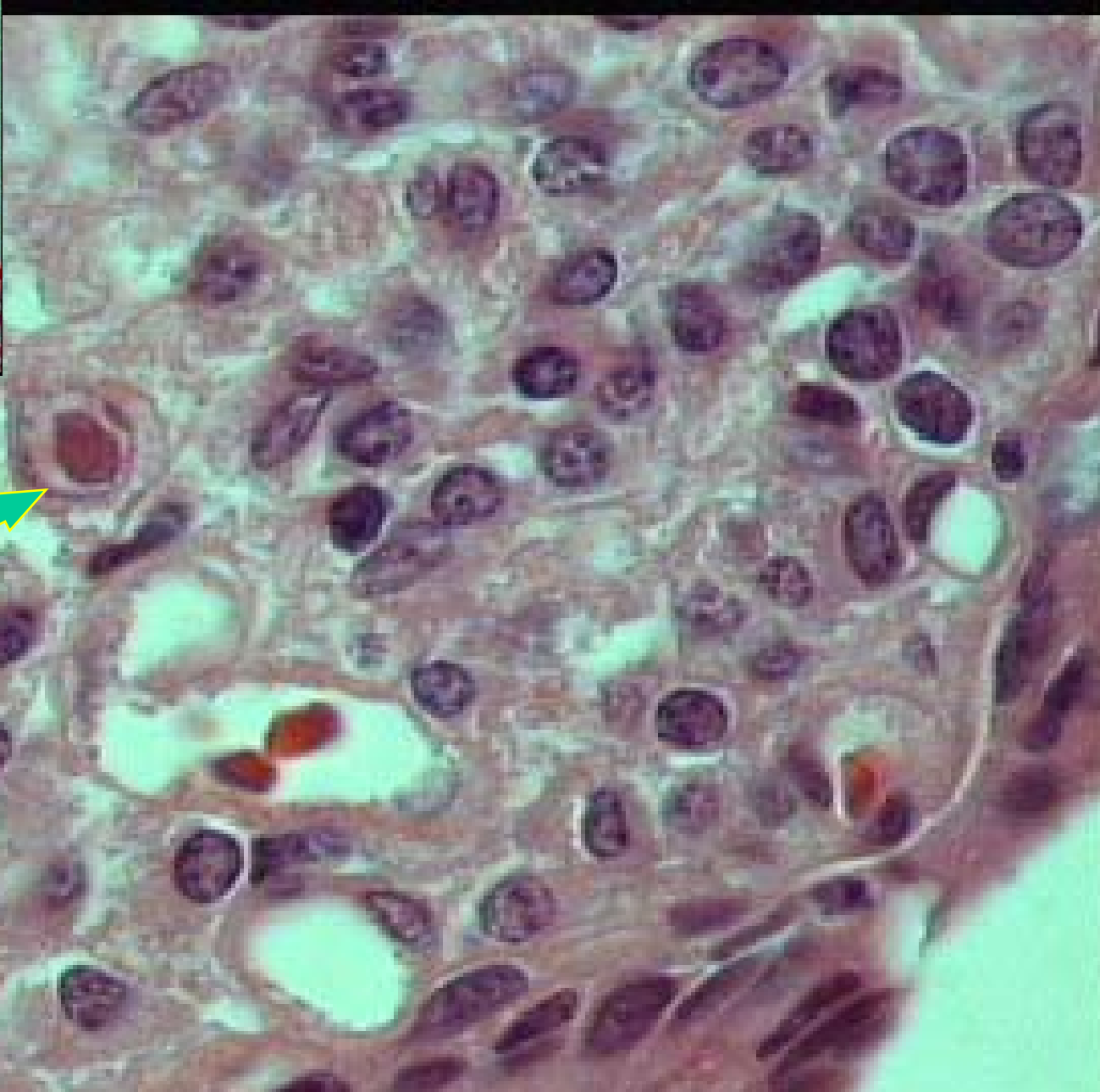
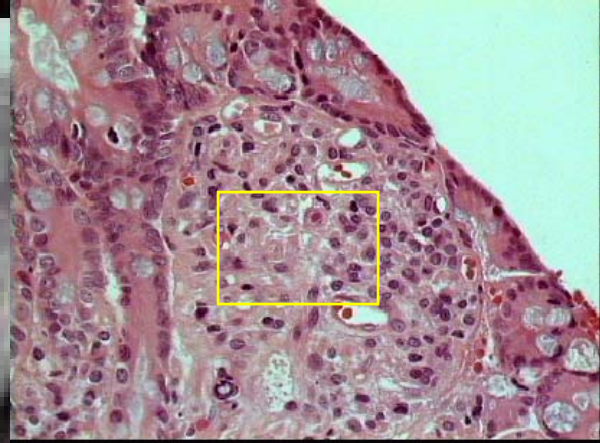


Medium power view of the duodenal mucosa, focal erosive changes.

MAIN MENU



QUIT



High power view, large nuclear inclusion in an endothelial cell, typical of CMV.

MAIN MENU



QUIT