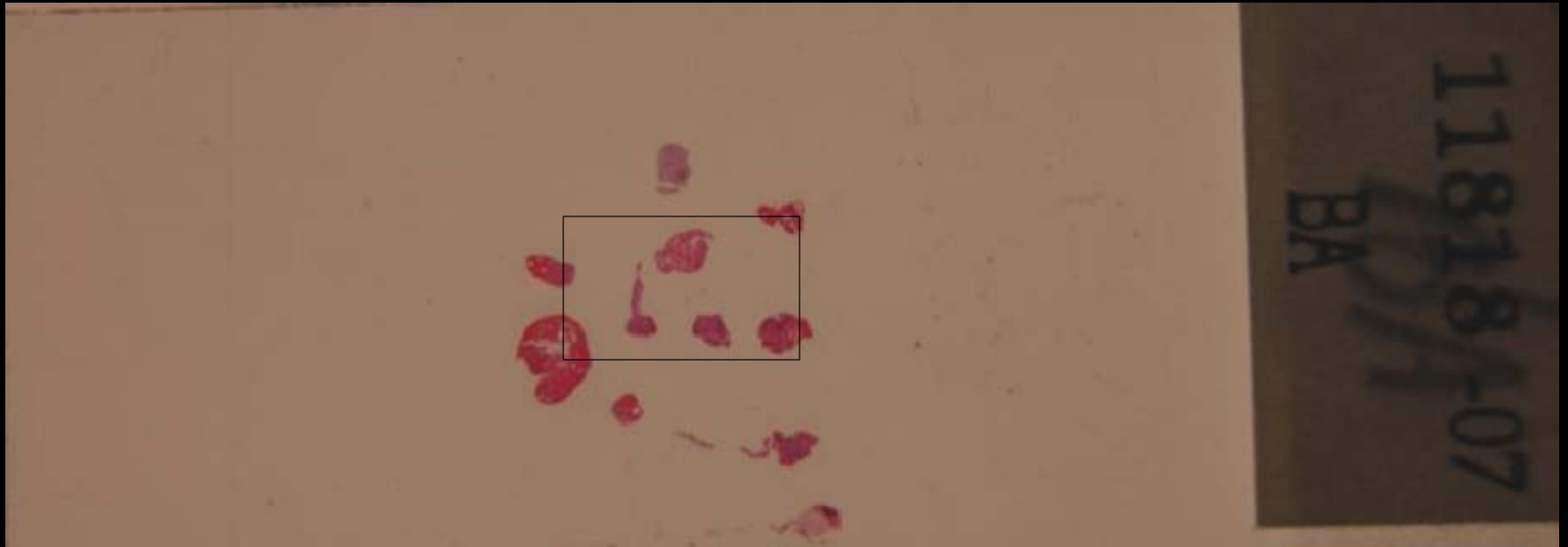


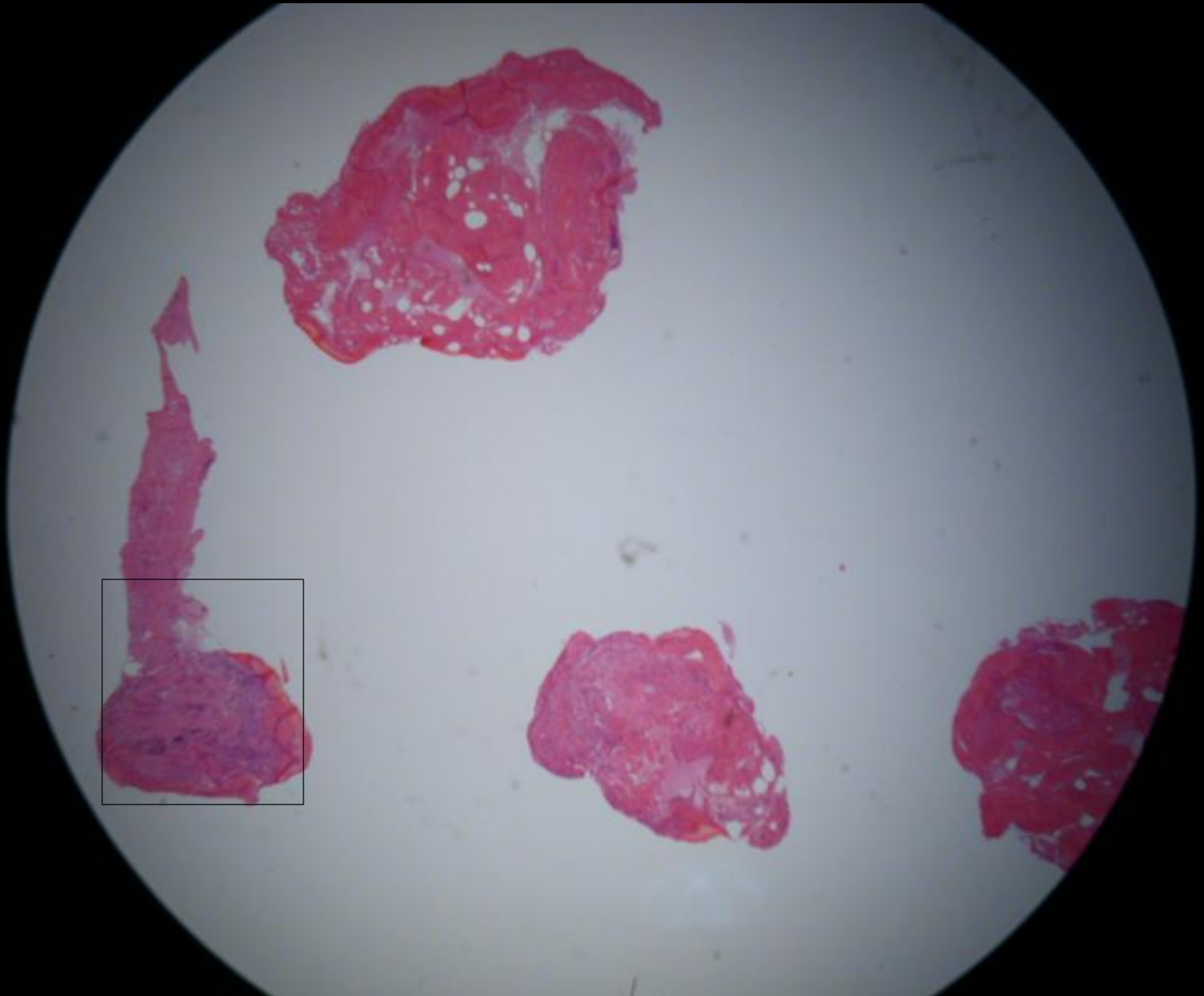
Lung mass, peripheral

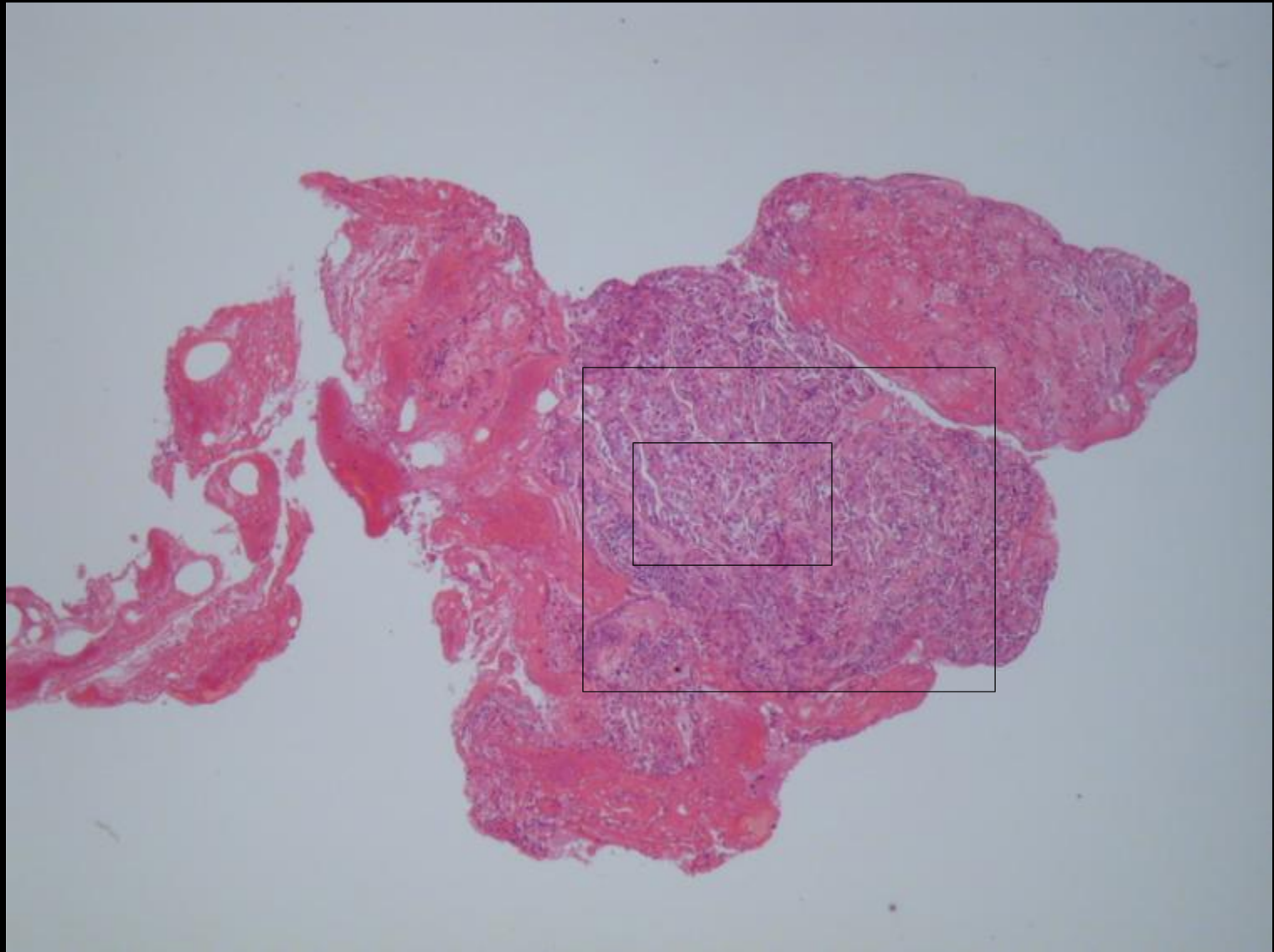
Endoscopic biopsy

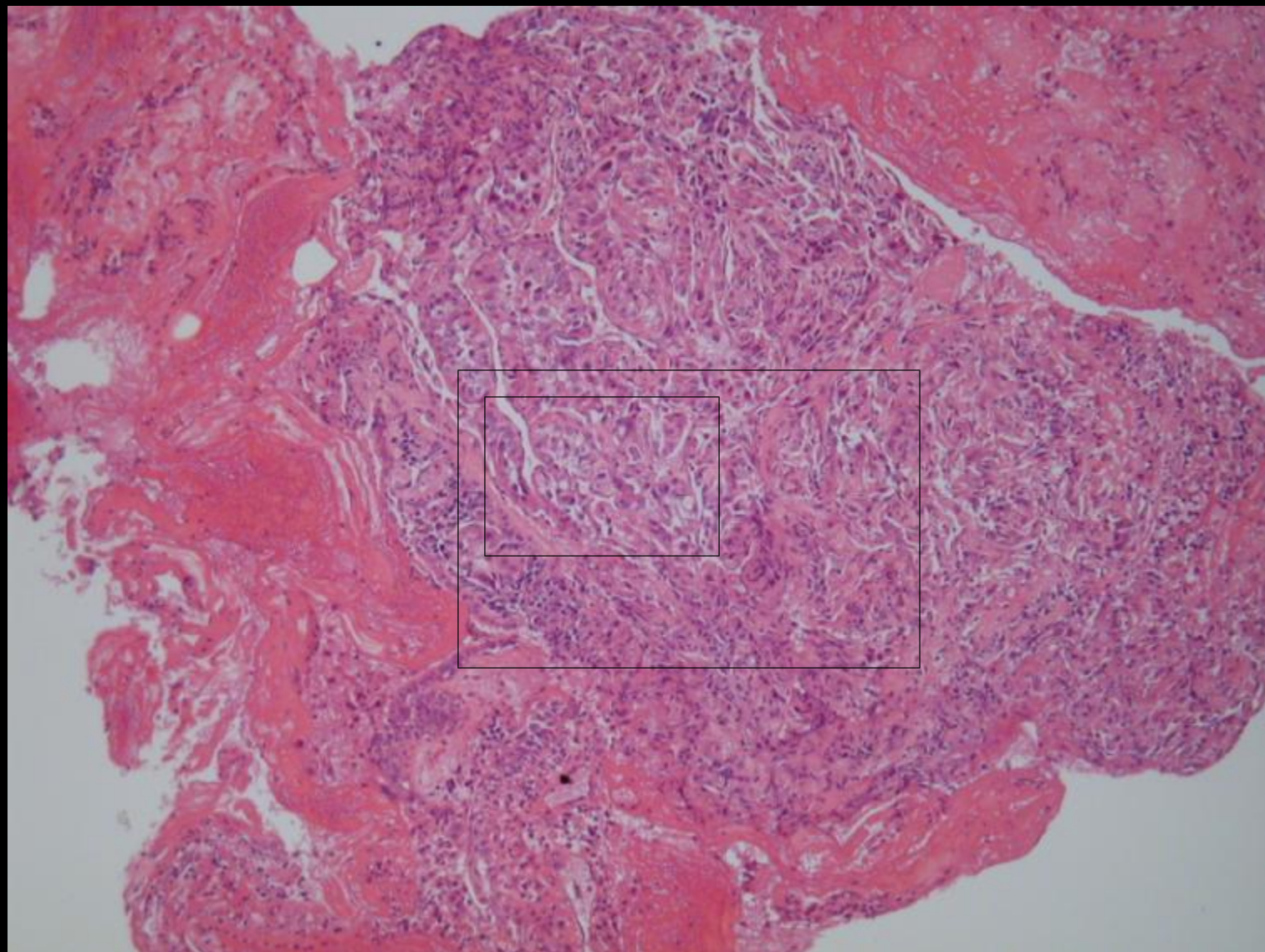
Gérard ABADJIAN
Damascus, May 2008

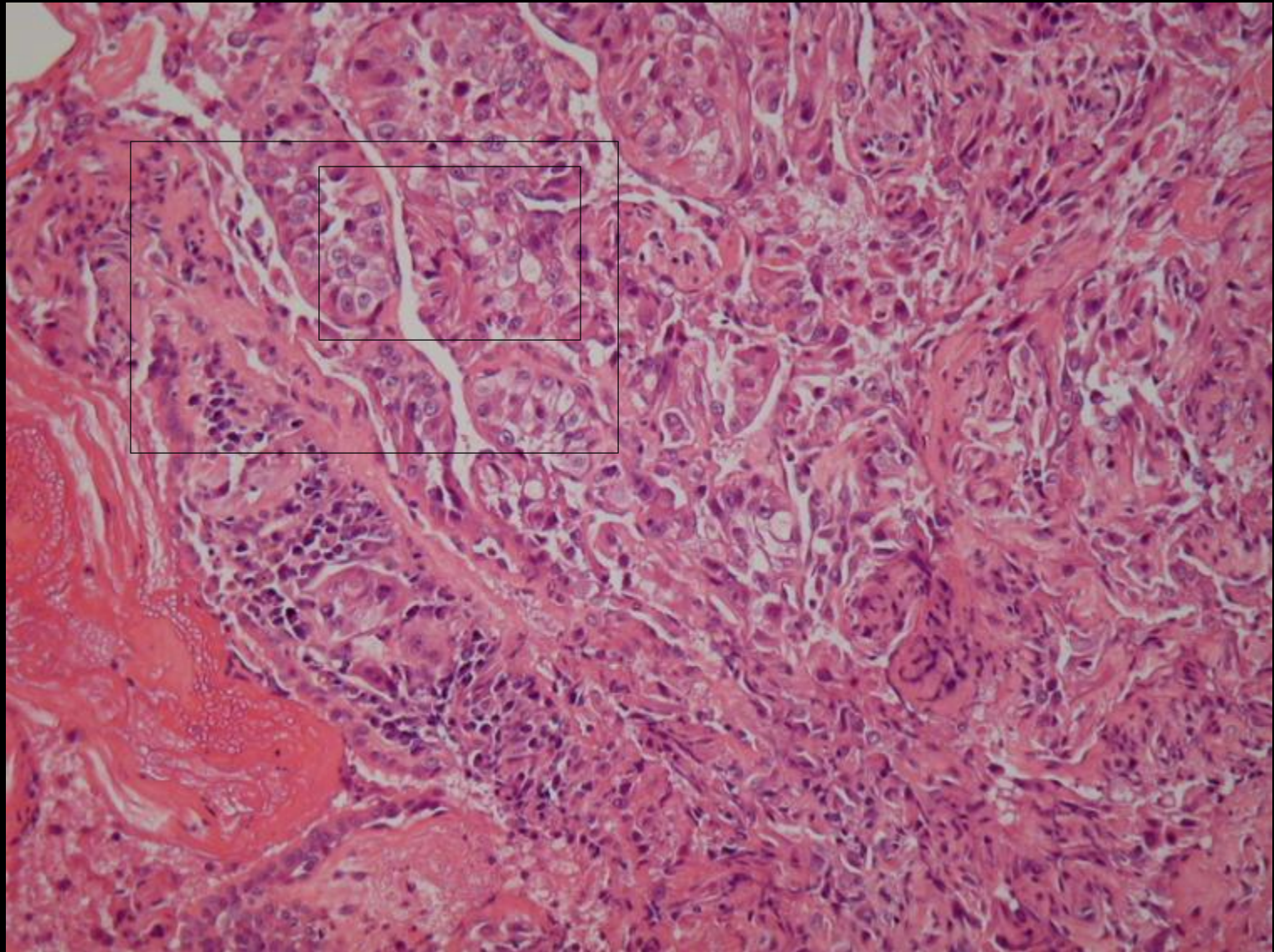
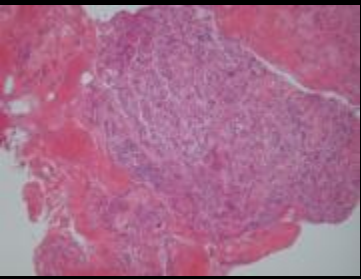
HE slide

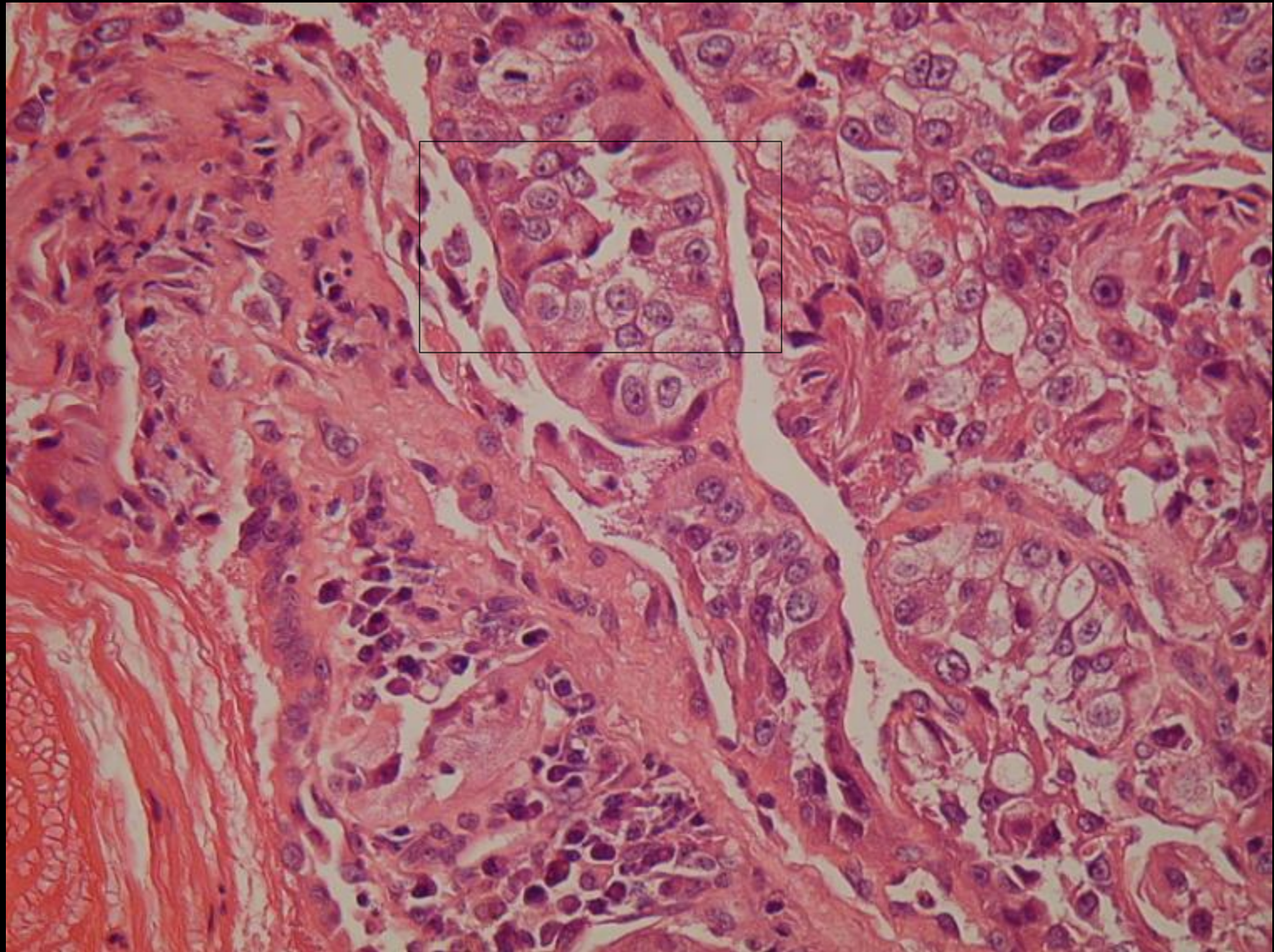
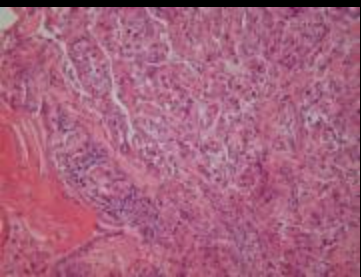
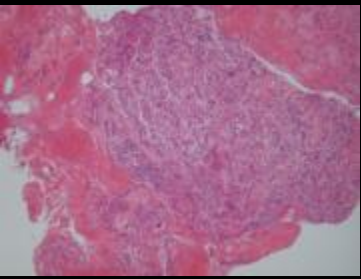


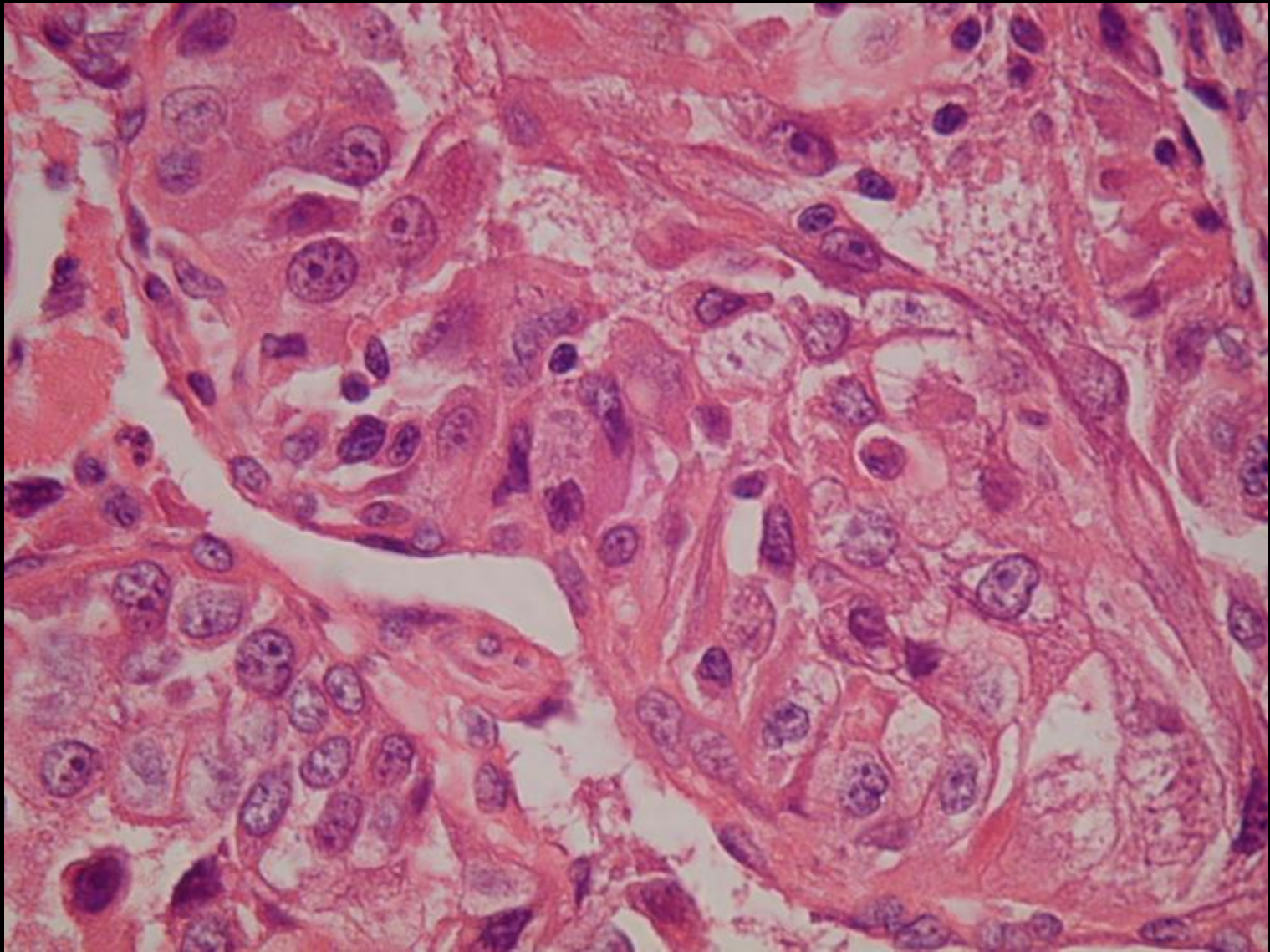
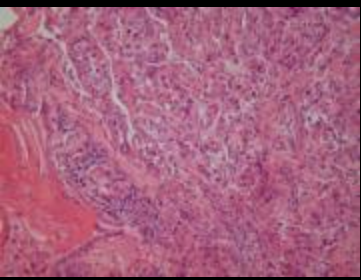
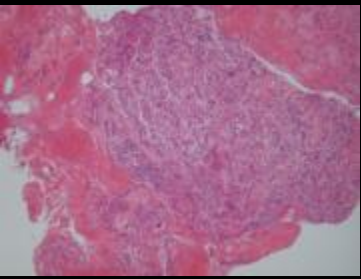




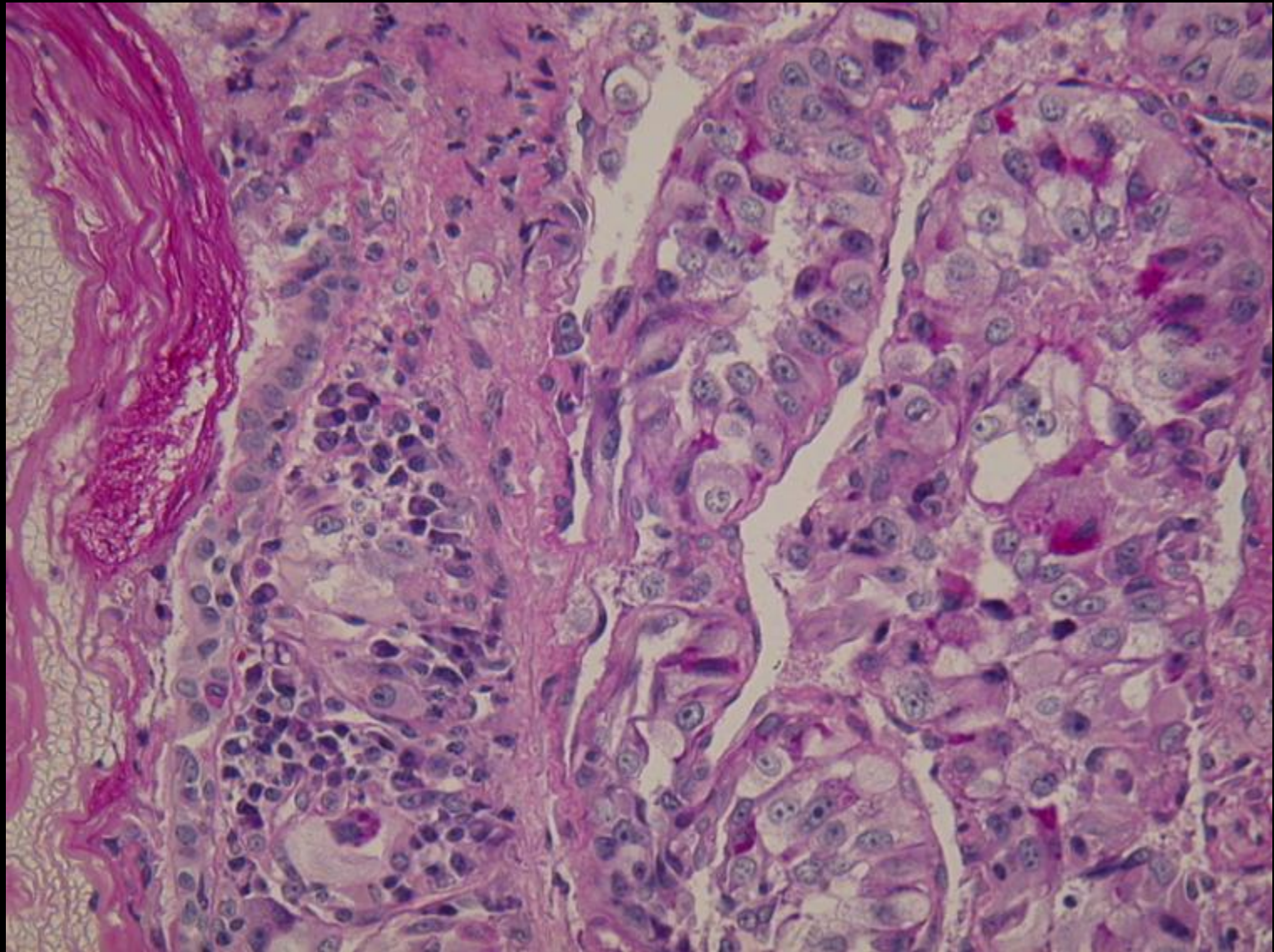
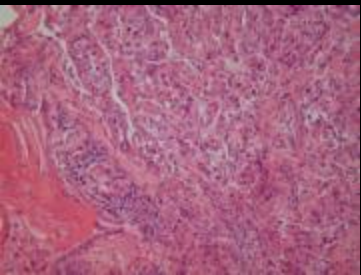
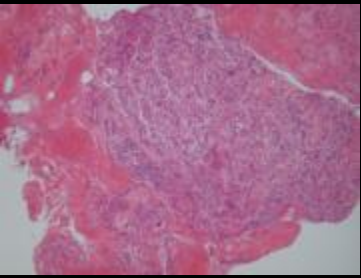








PAS
CK
34bE12
CD56

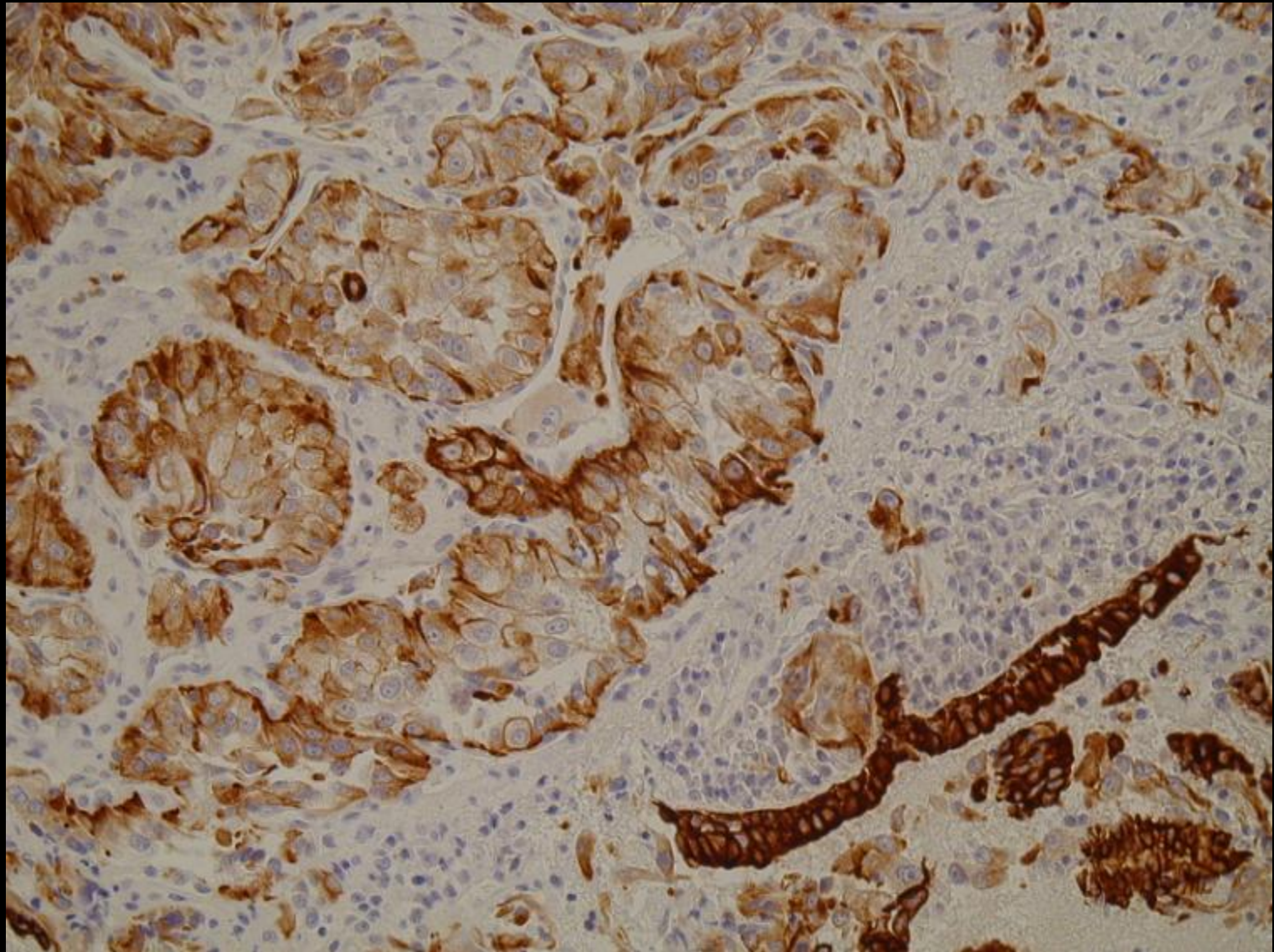
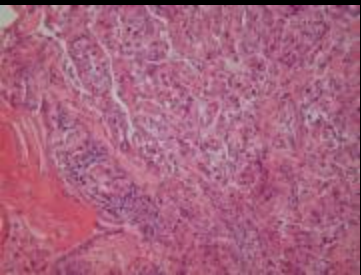
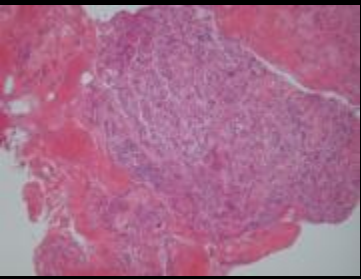


PAS

CK

34bE12

CD56

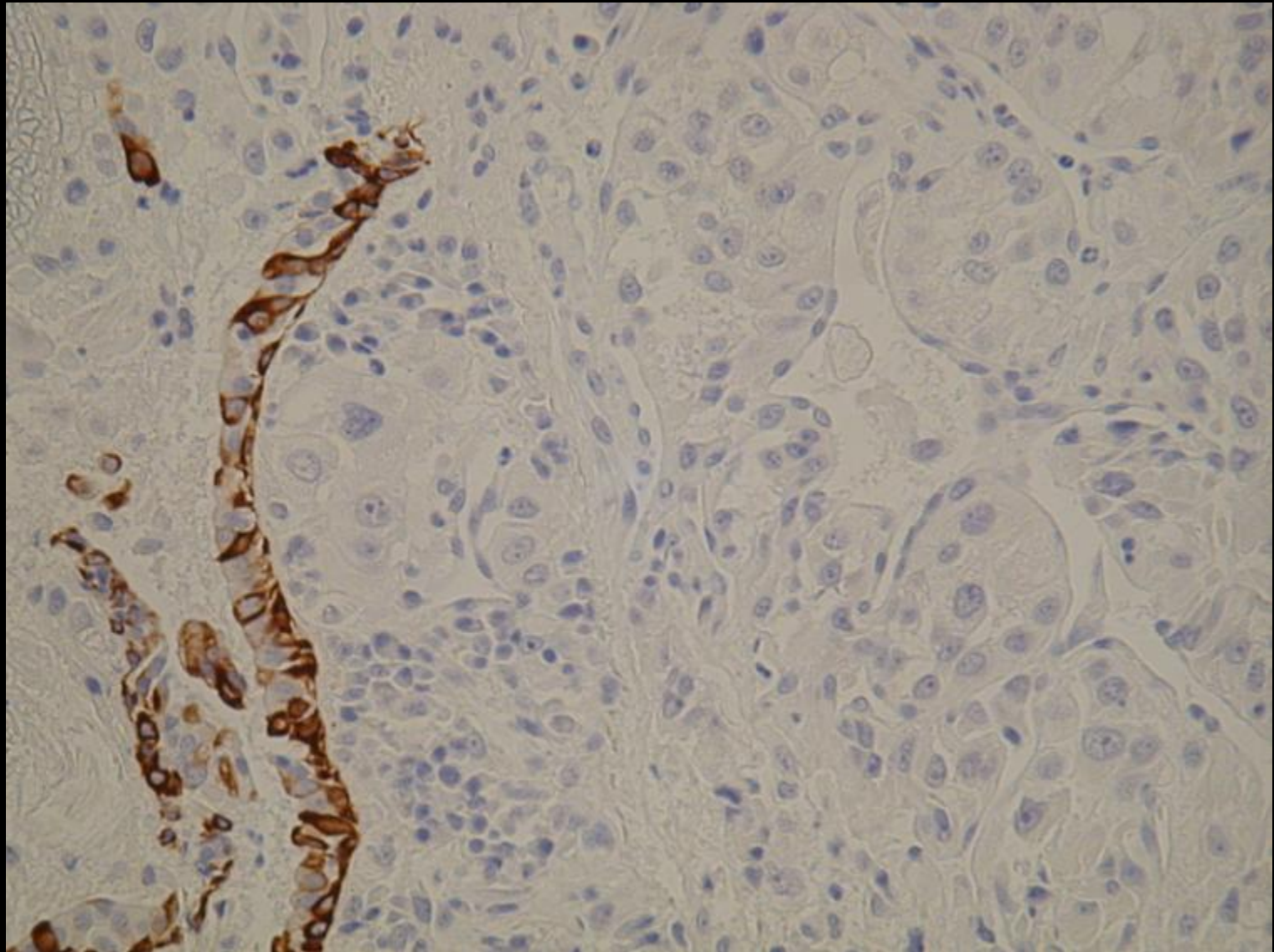
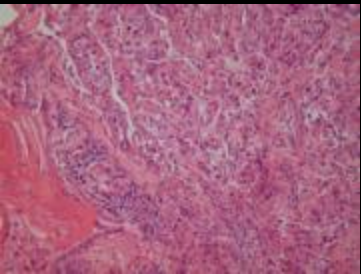
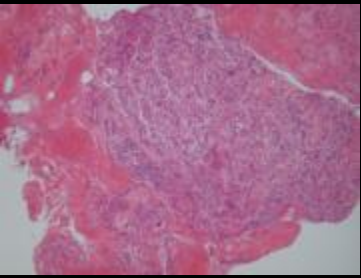


PAS

CK

34bE12

CD56

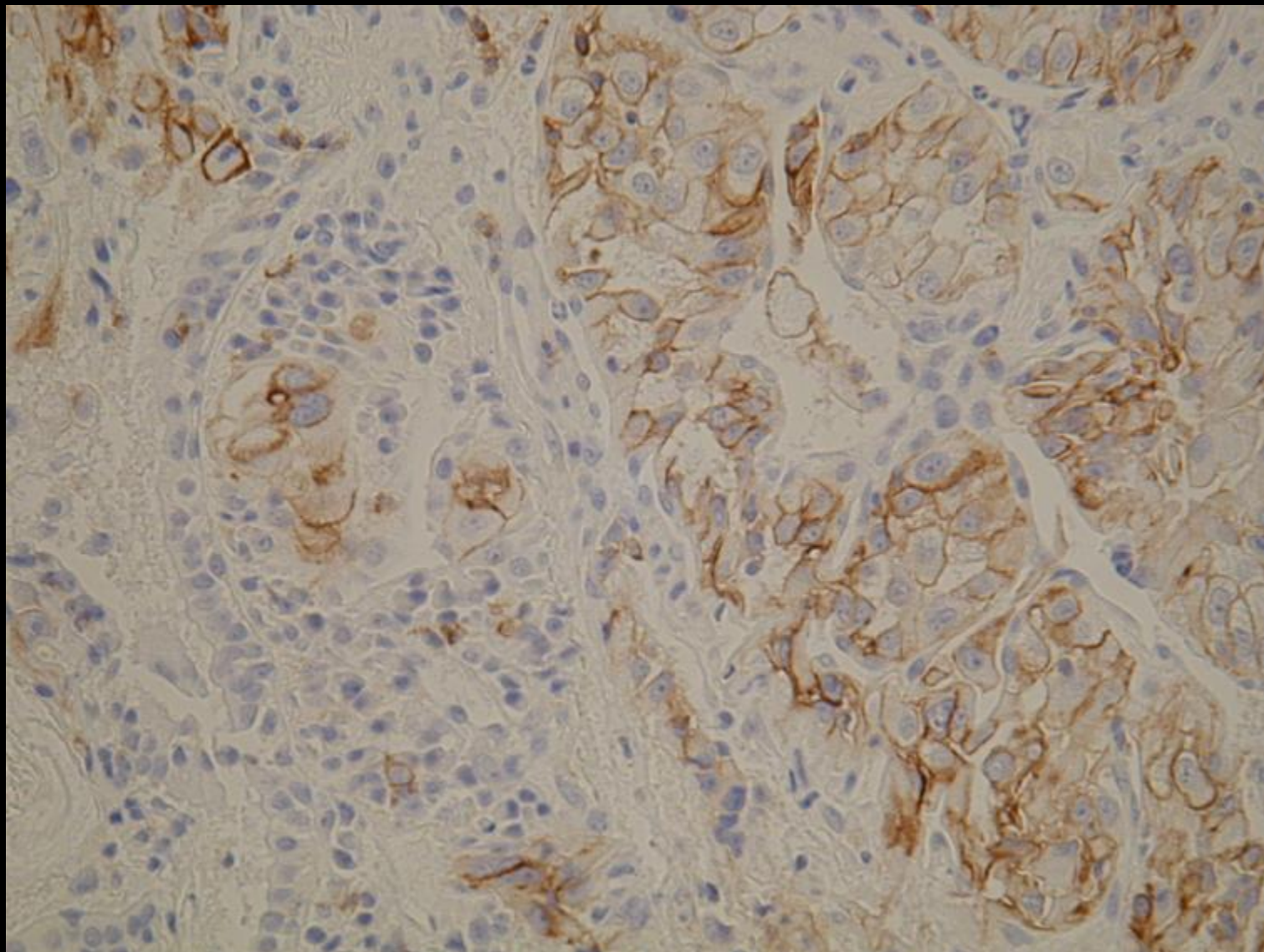
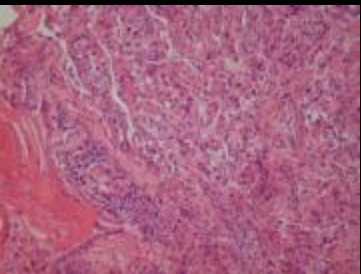
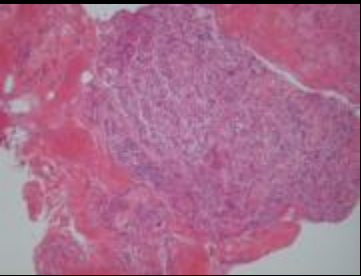


PAS

CK

34bE12

CD56



PAS
CK
34bE12
CD56

Diagnosis:

Large cell neuroendocrine carcinoma