

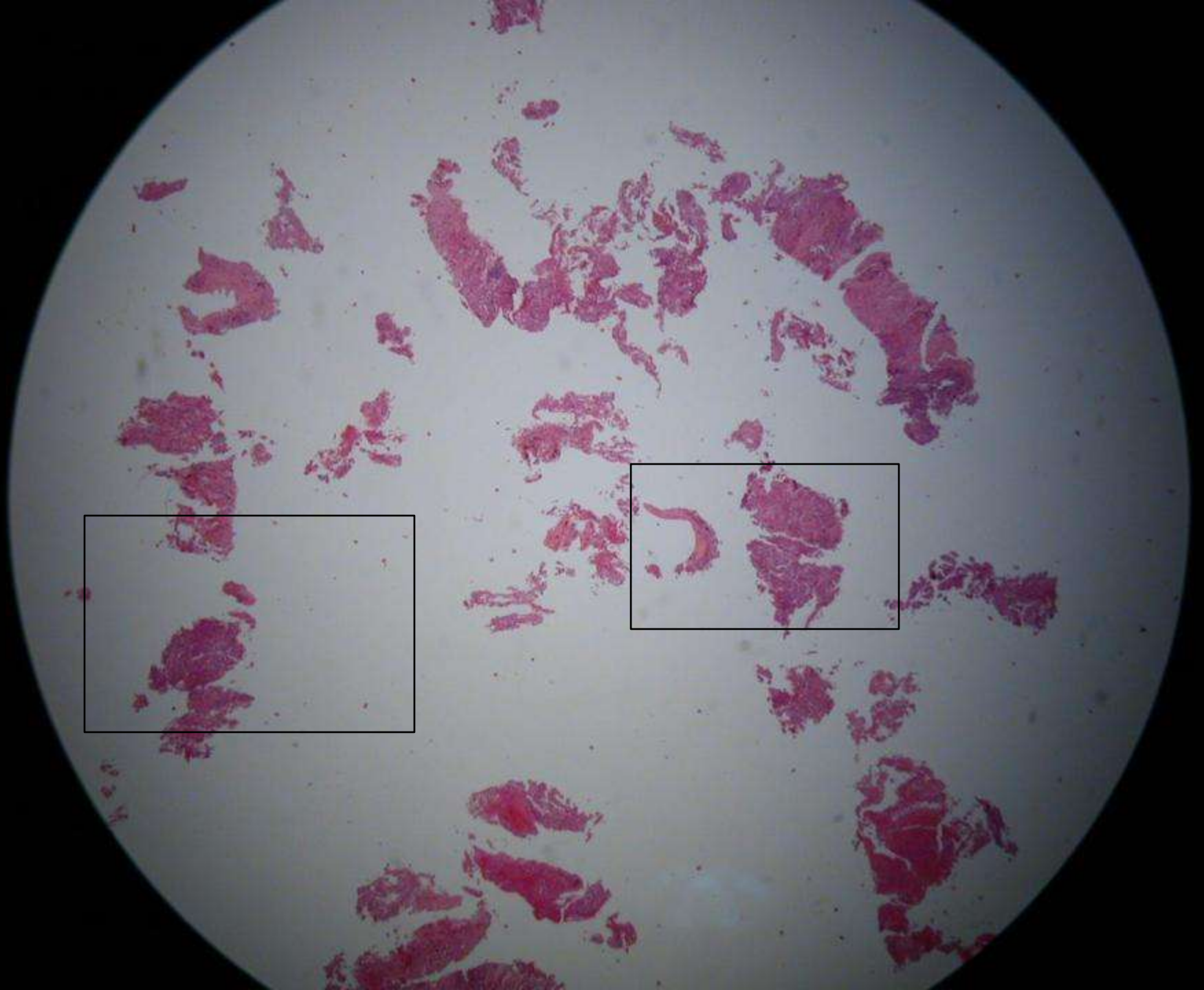
Peripheral lung tumor

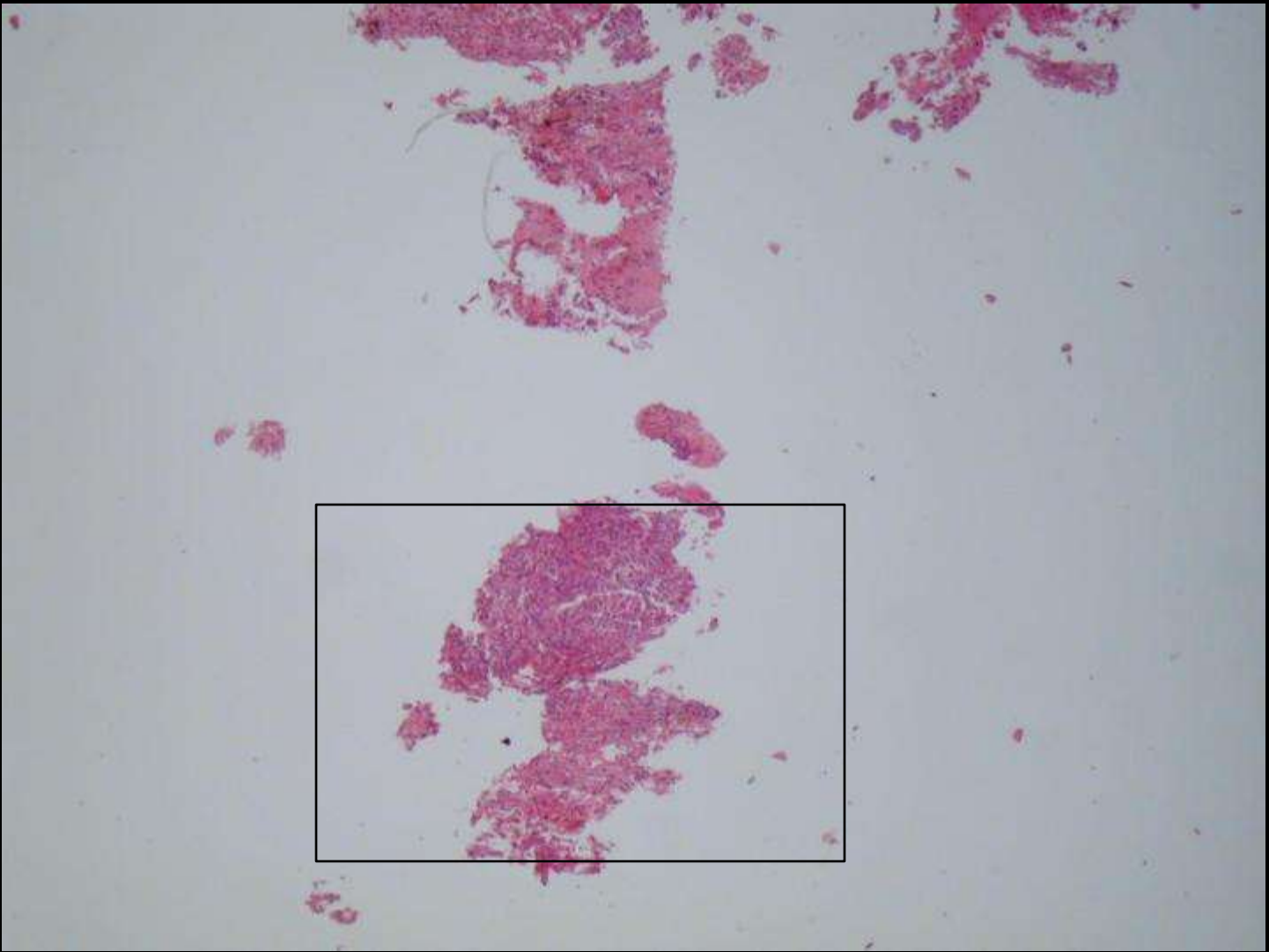
Transthoracic needle biopsy

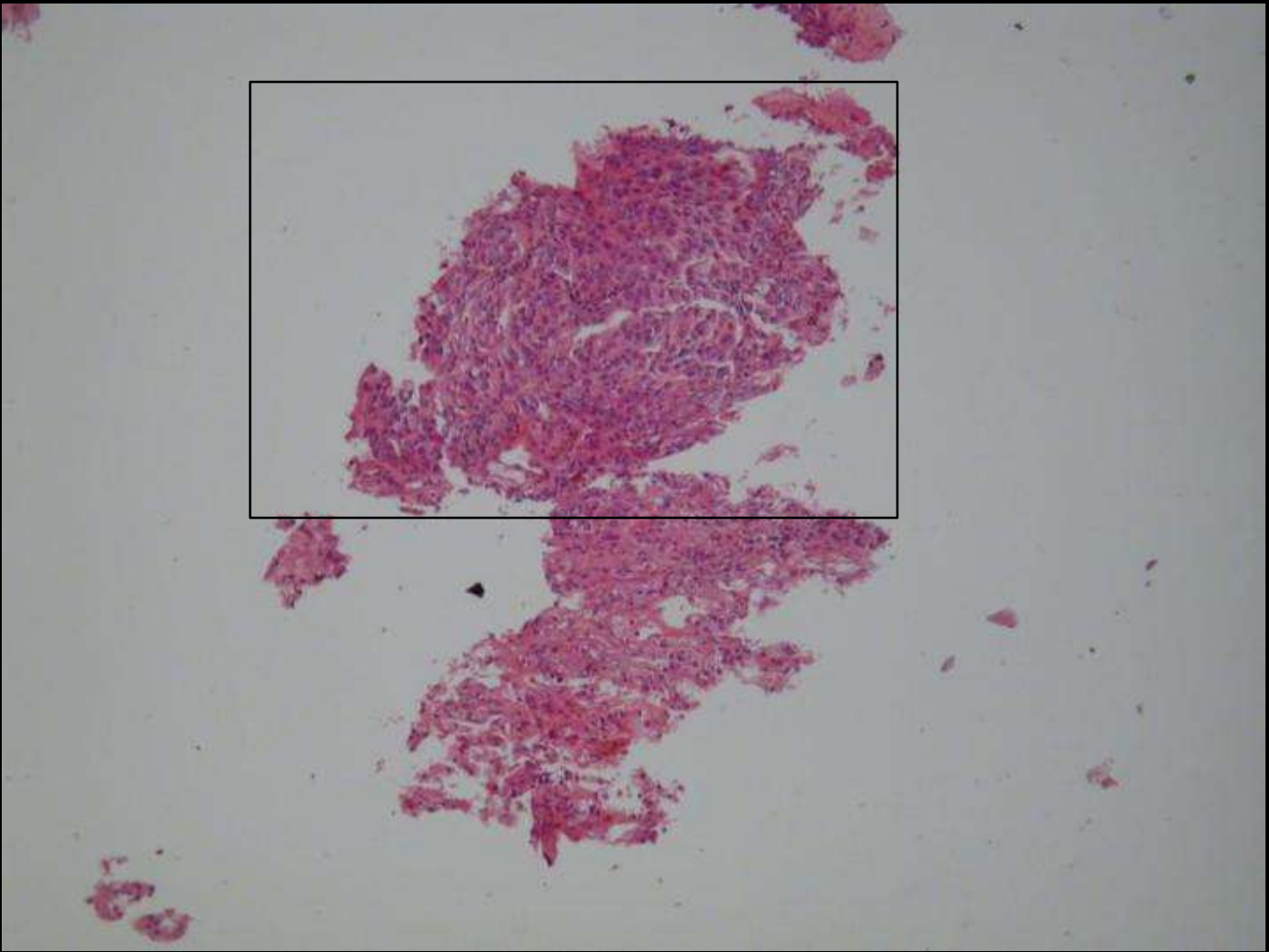
Gérard ABADJIAN

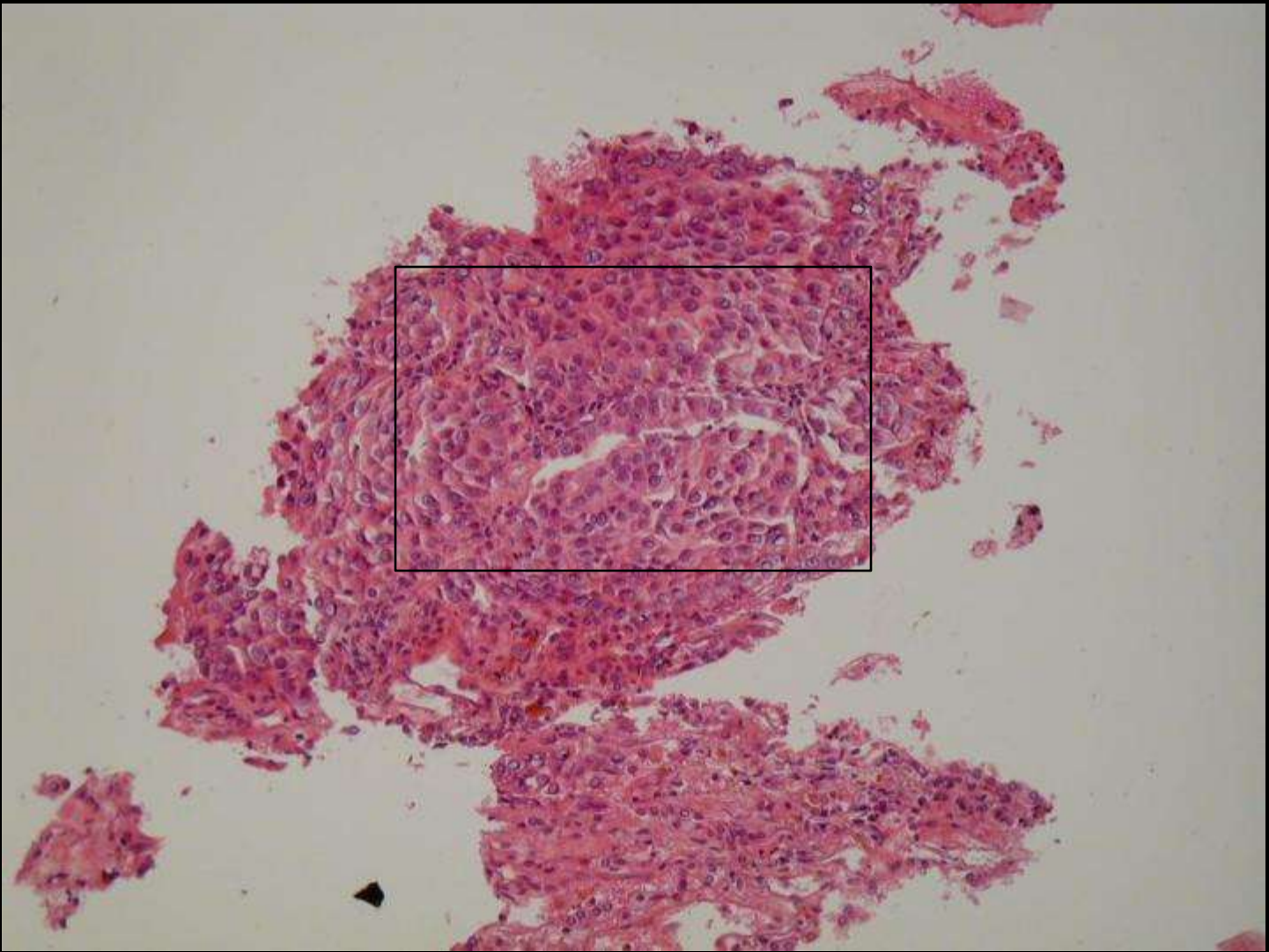
May 2008

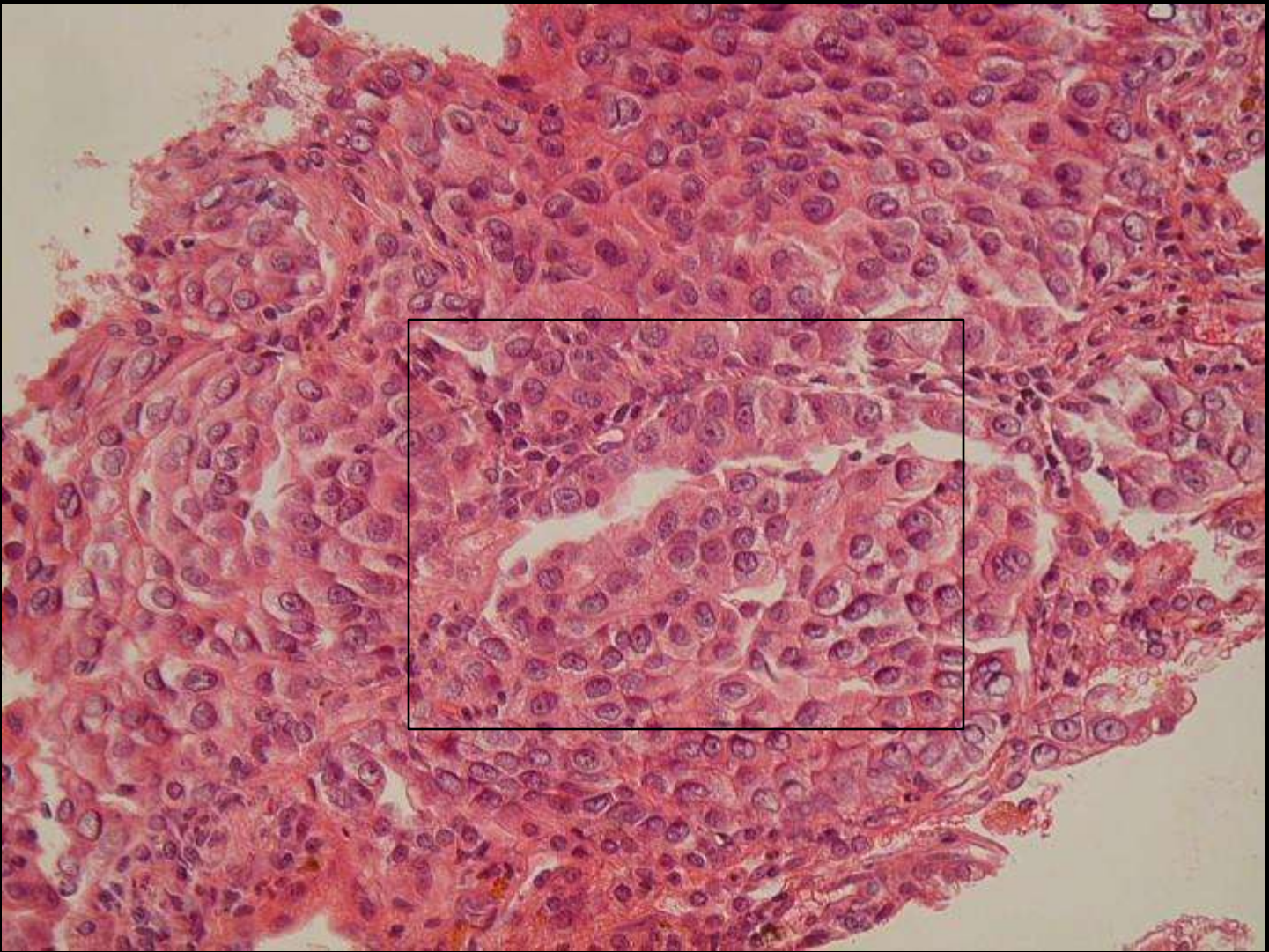
Diagnosis in the last slide

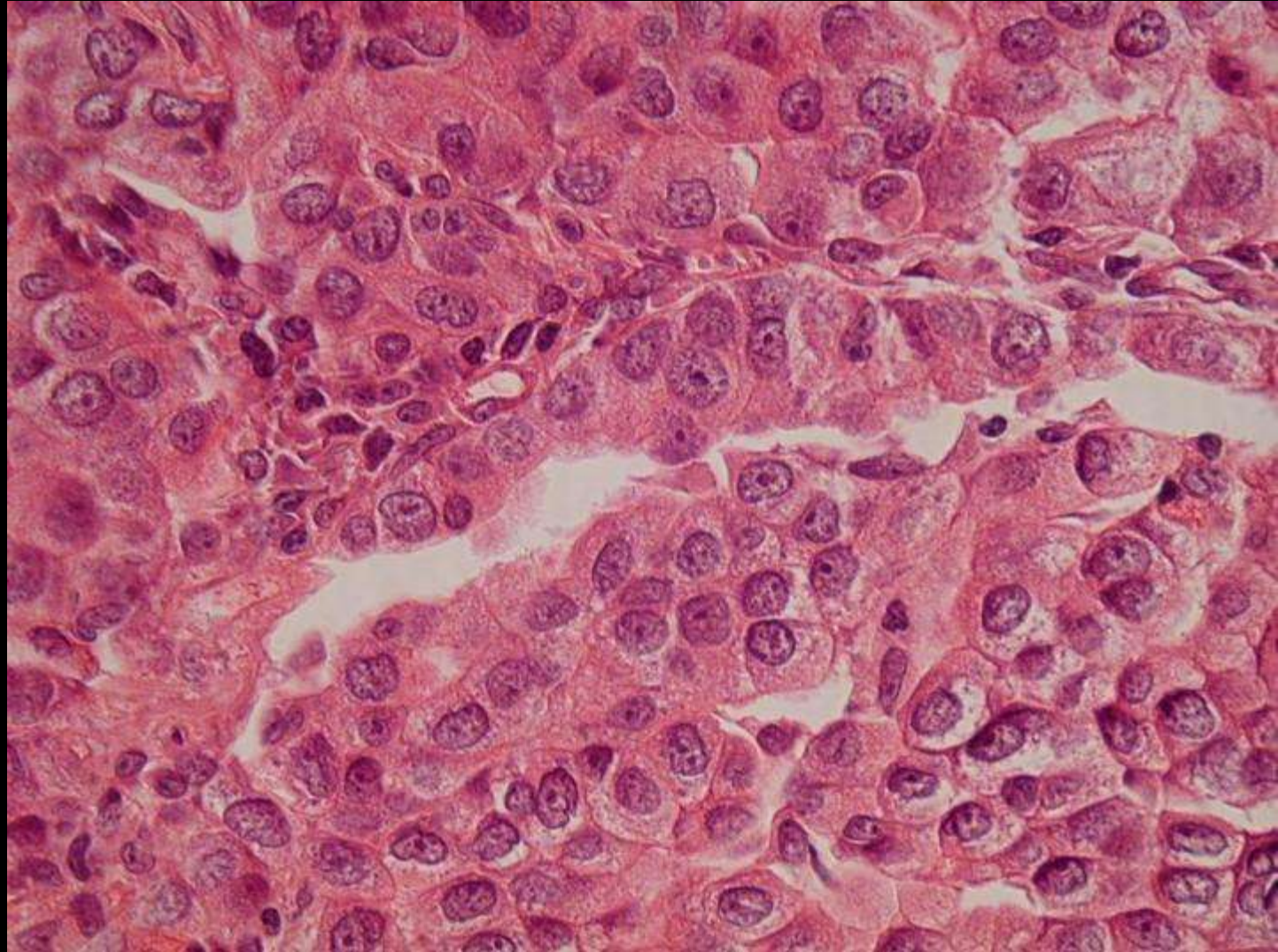




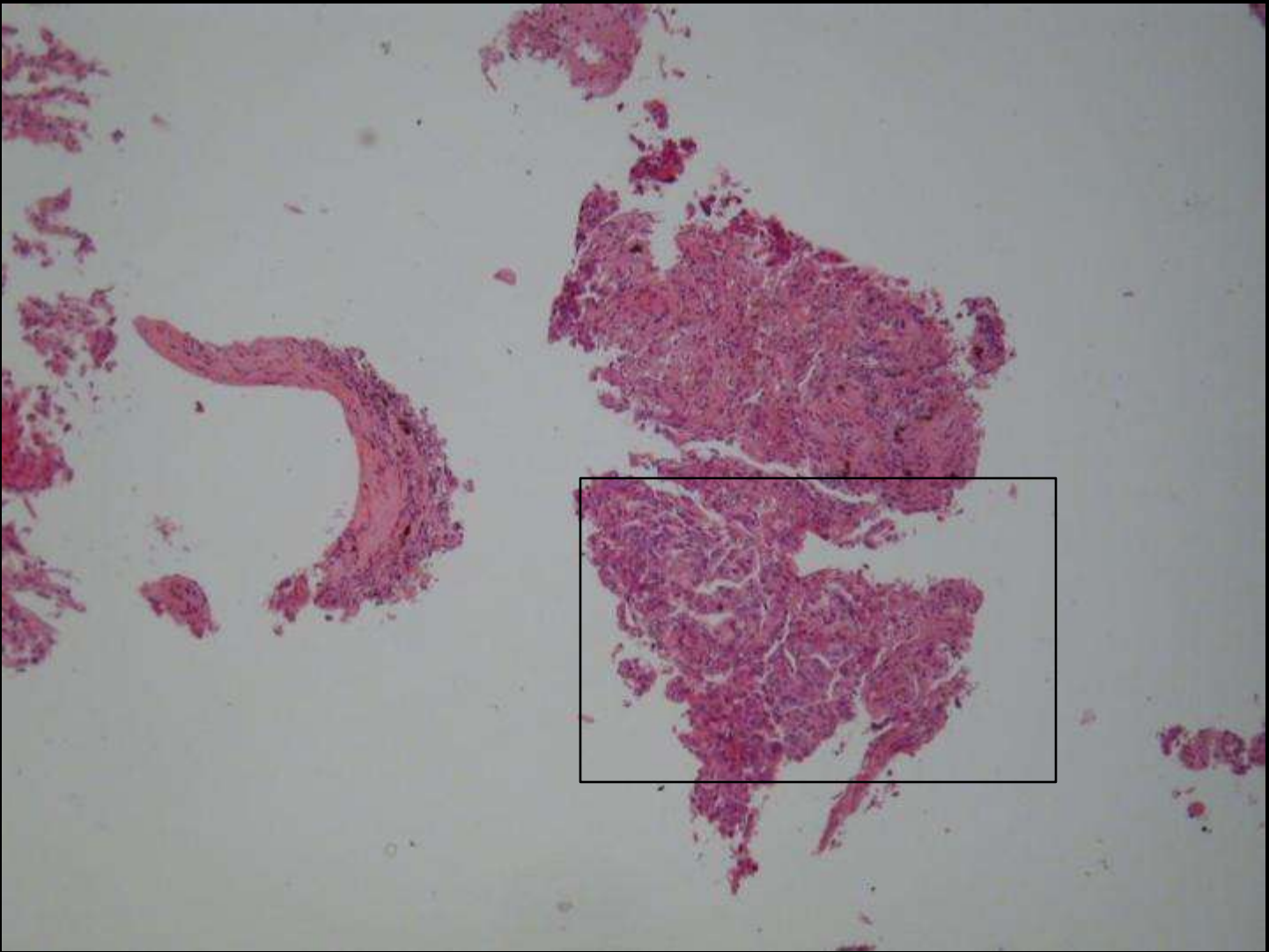


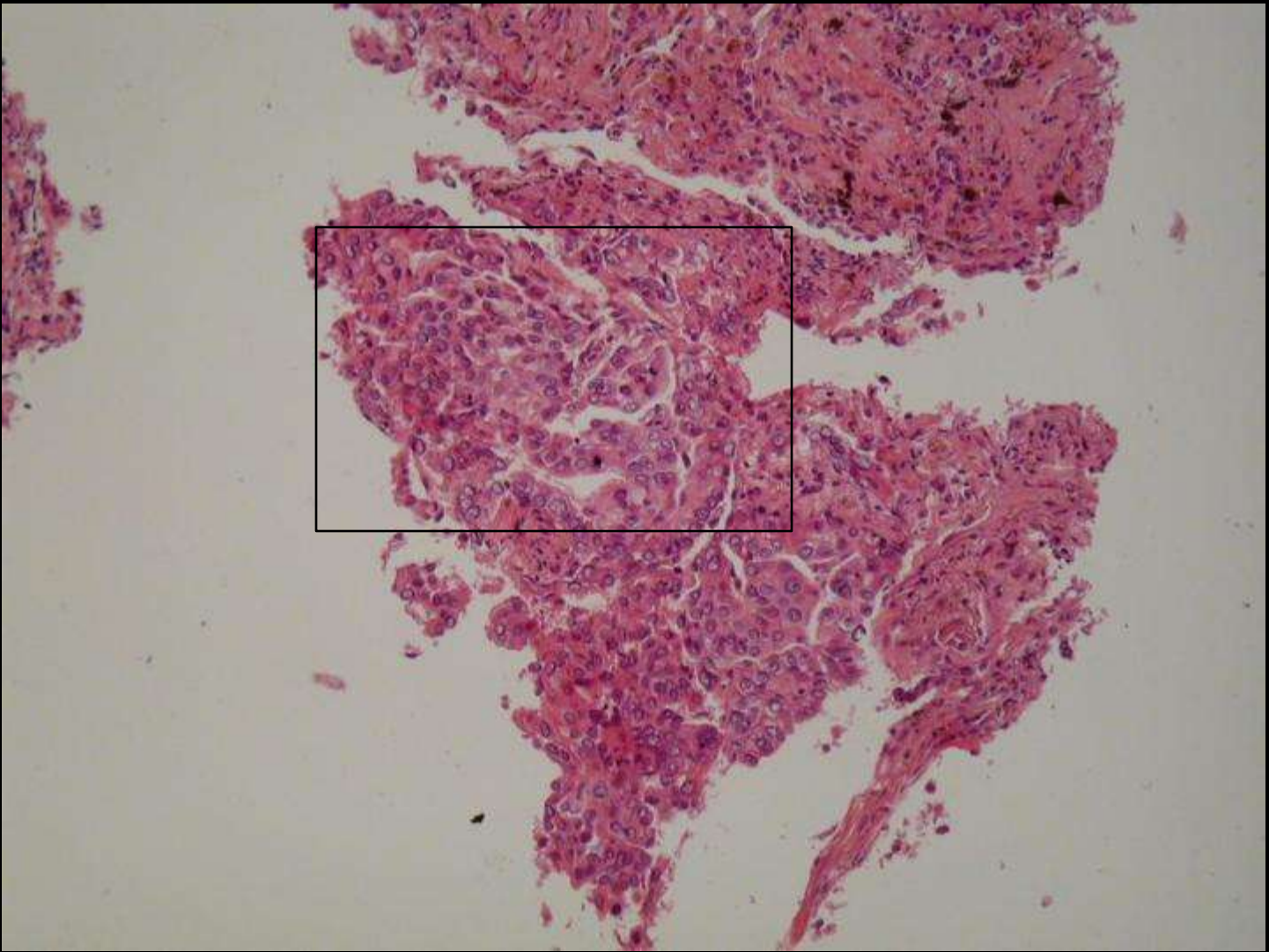


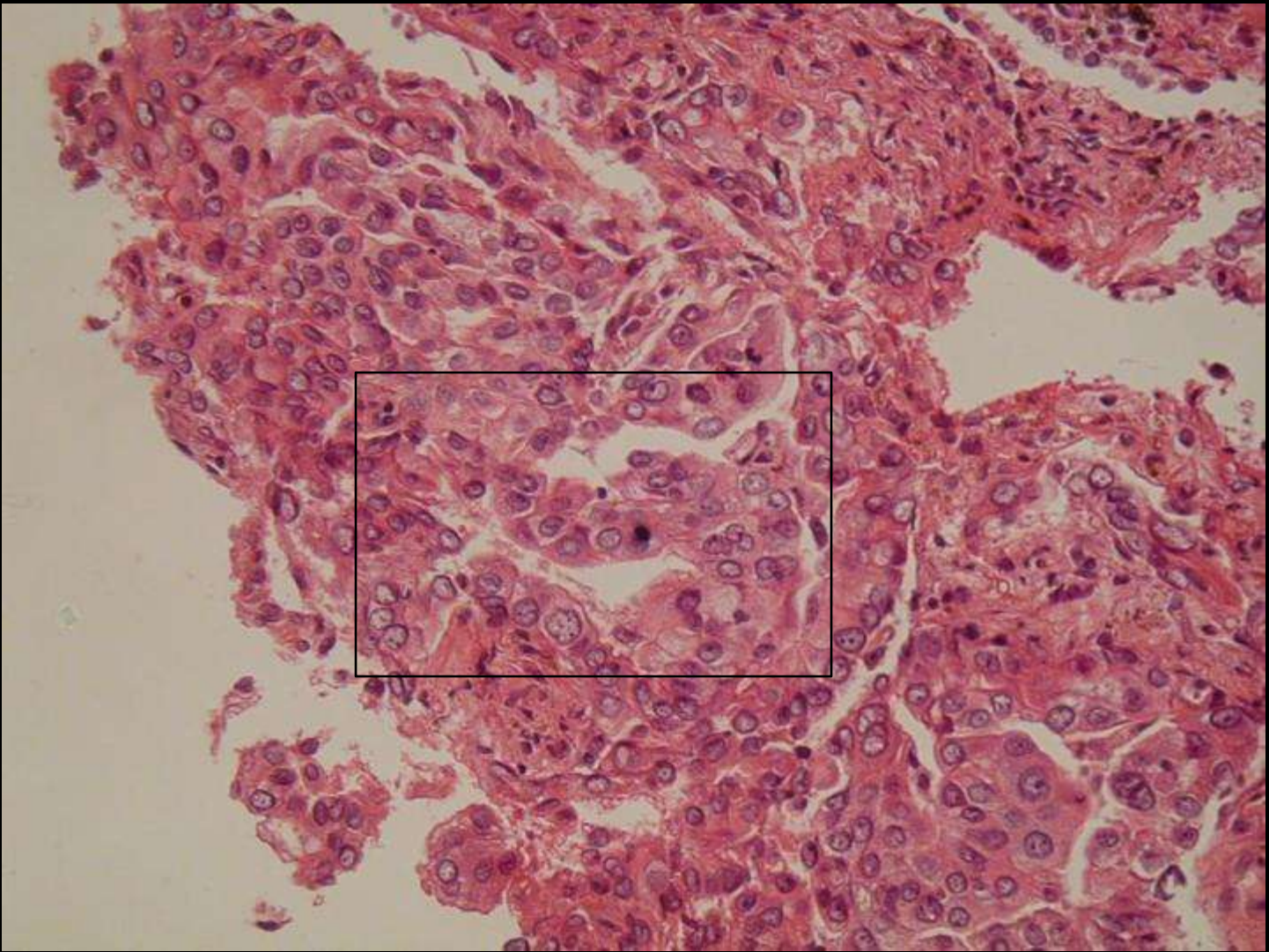


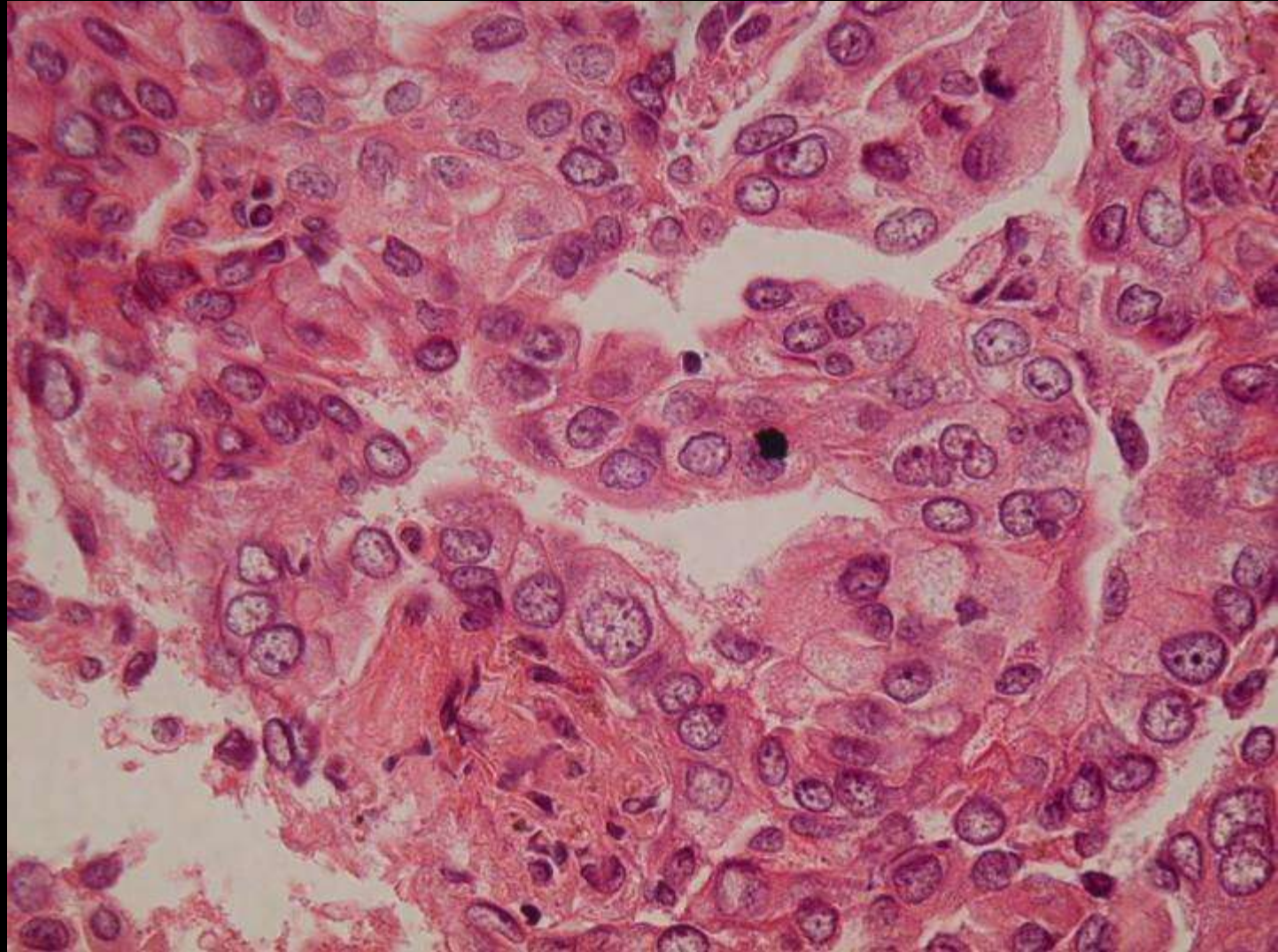


PAS
CK7
TTF1
34bE12

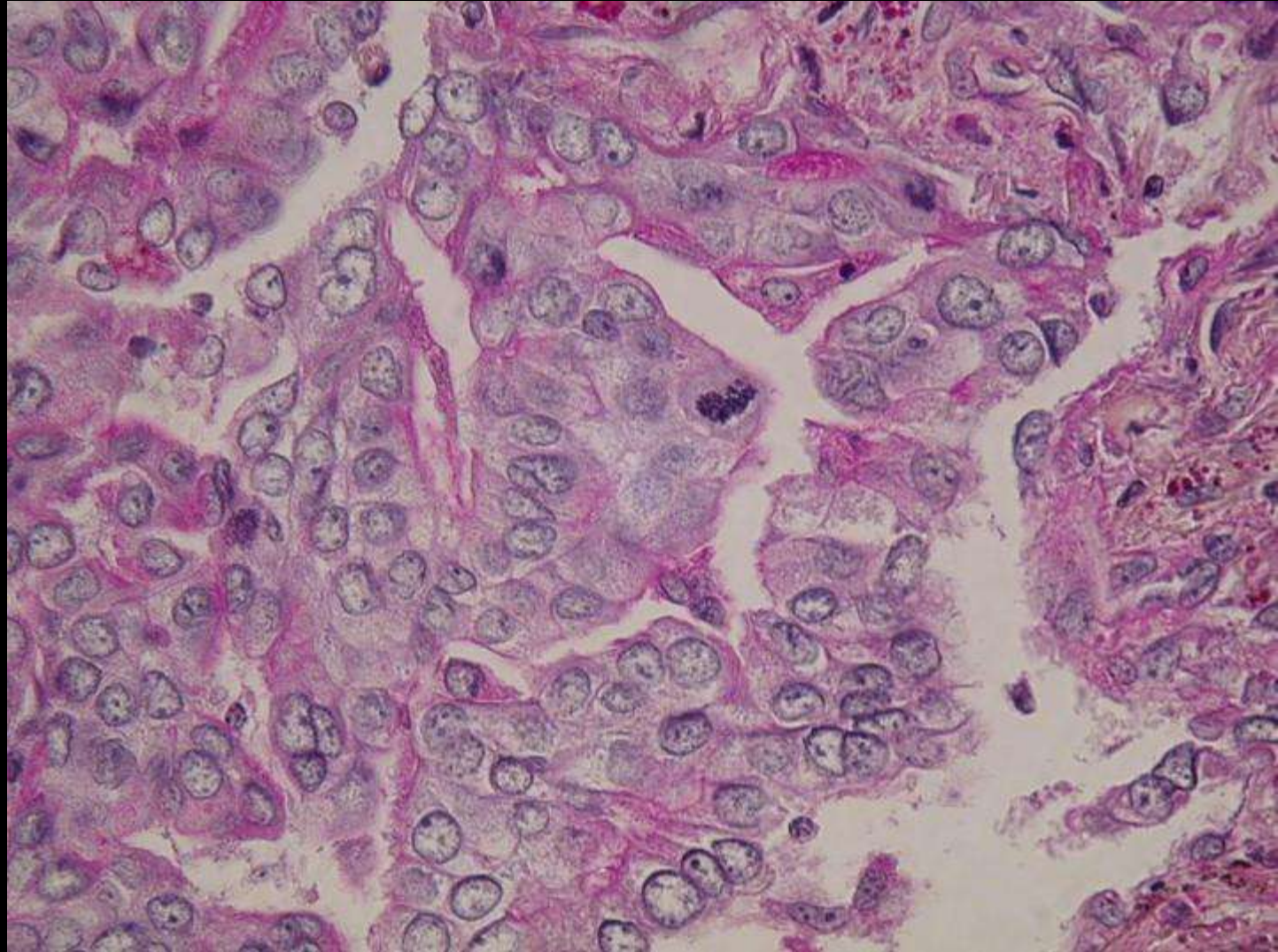




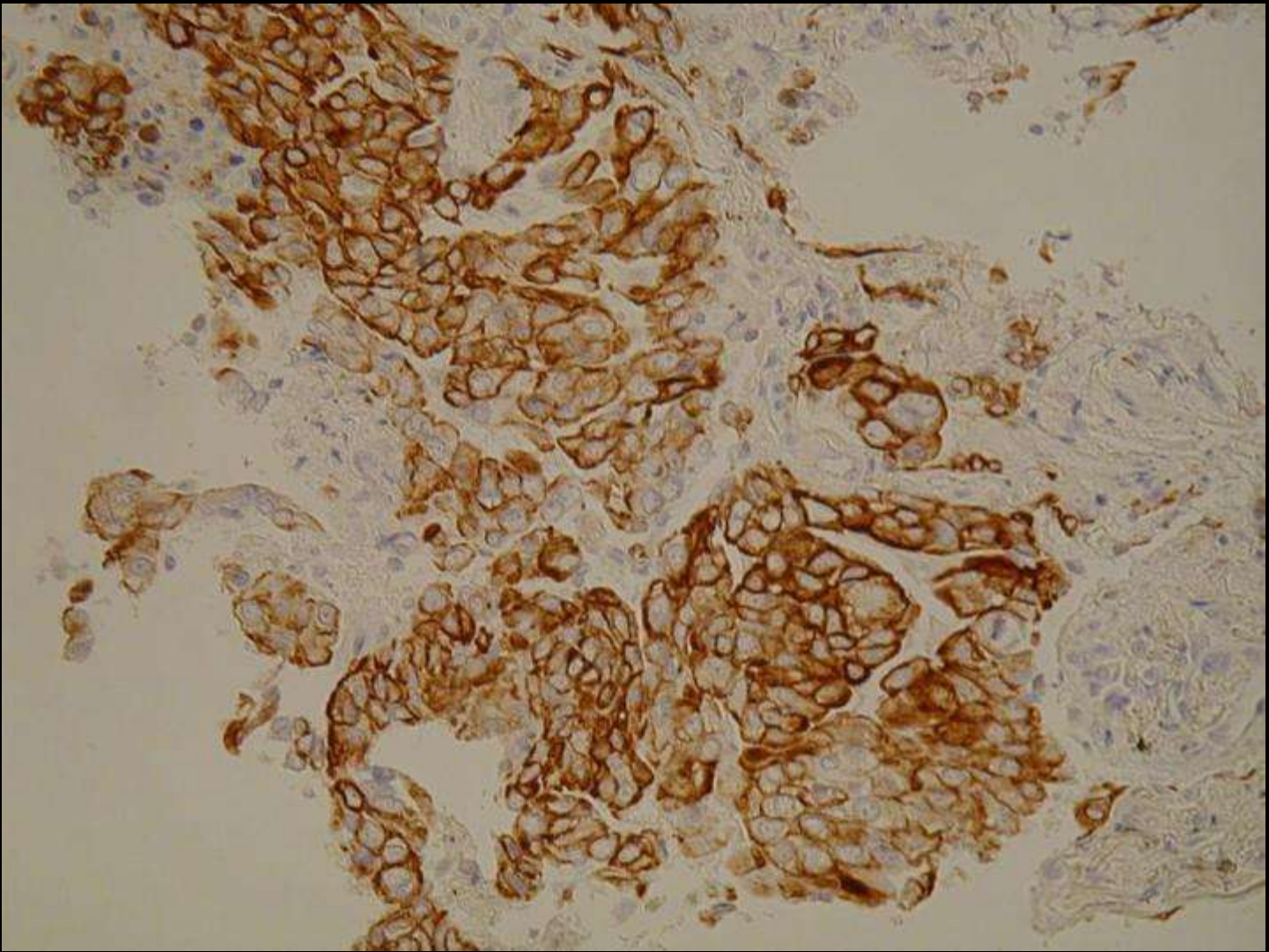




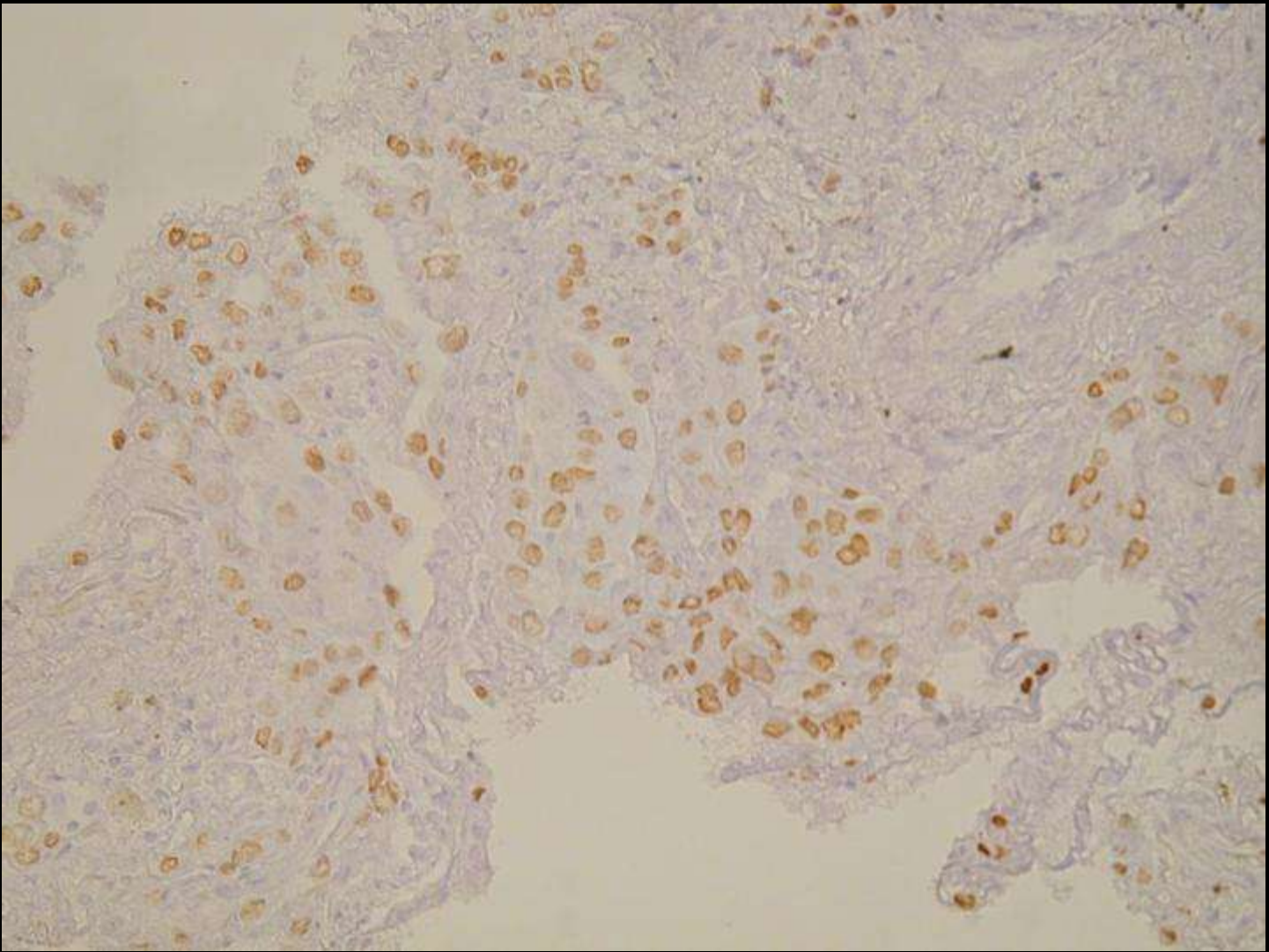
PAS
CK7
TTF1
34bE12



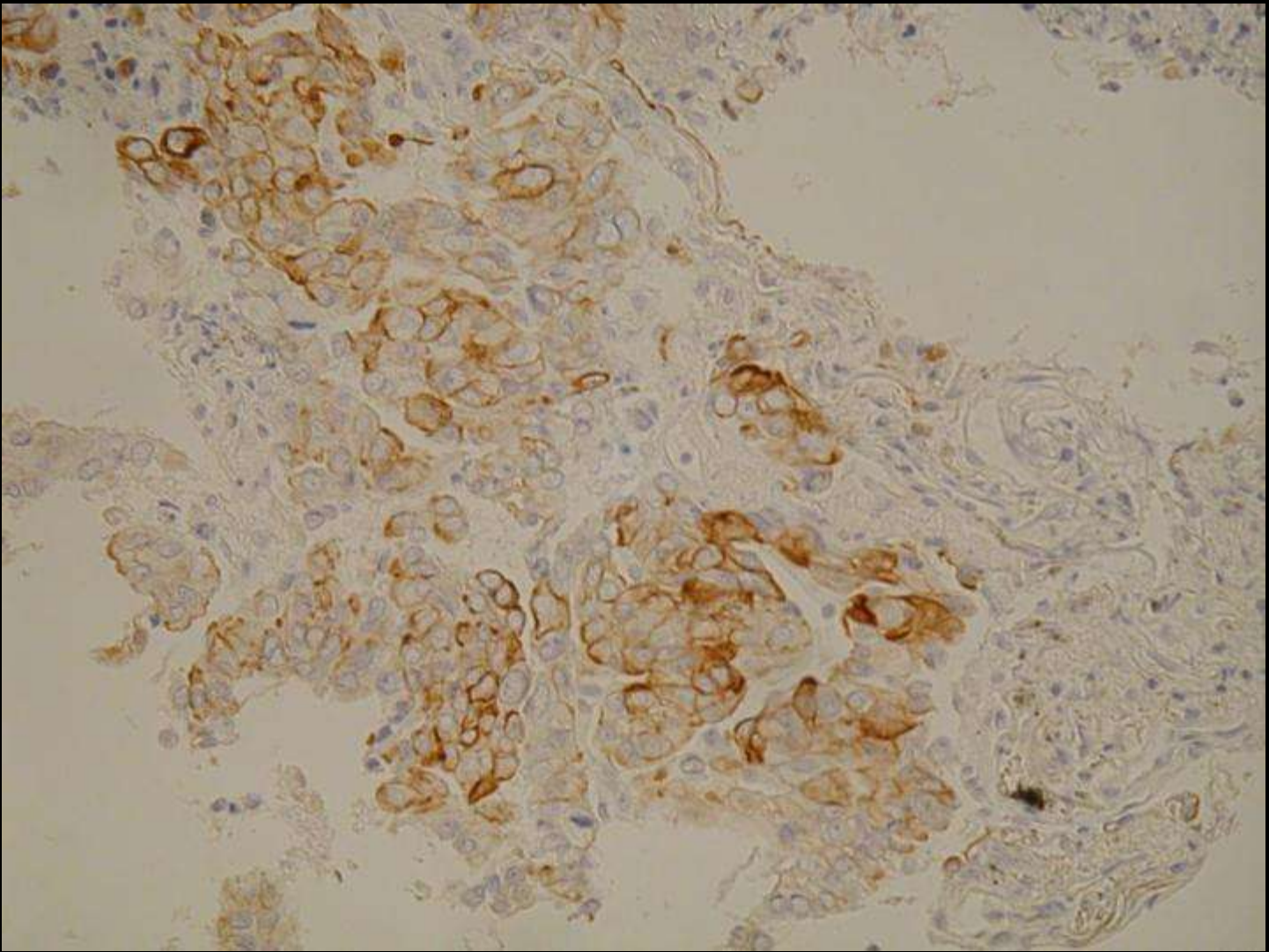
PAS
CK7
TTF1
34bE12



PAS
CK7
TTF1
34bE12



PAS
CK7
TTF1
34bE12



PAS
CK7
TTF1
34bE12

Diagnosis »

Adenocarcinoma, NOS (NSCLC)