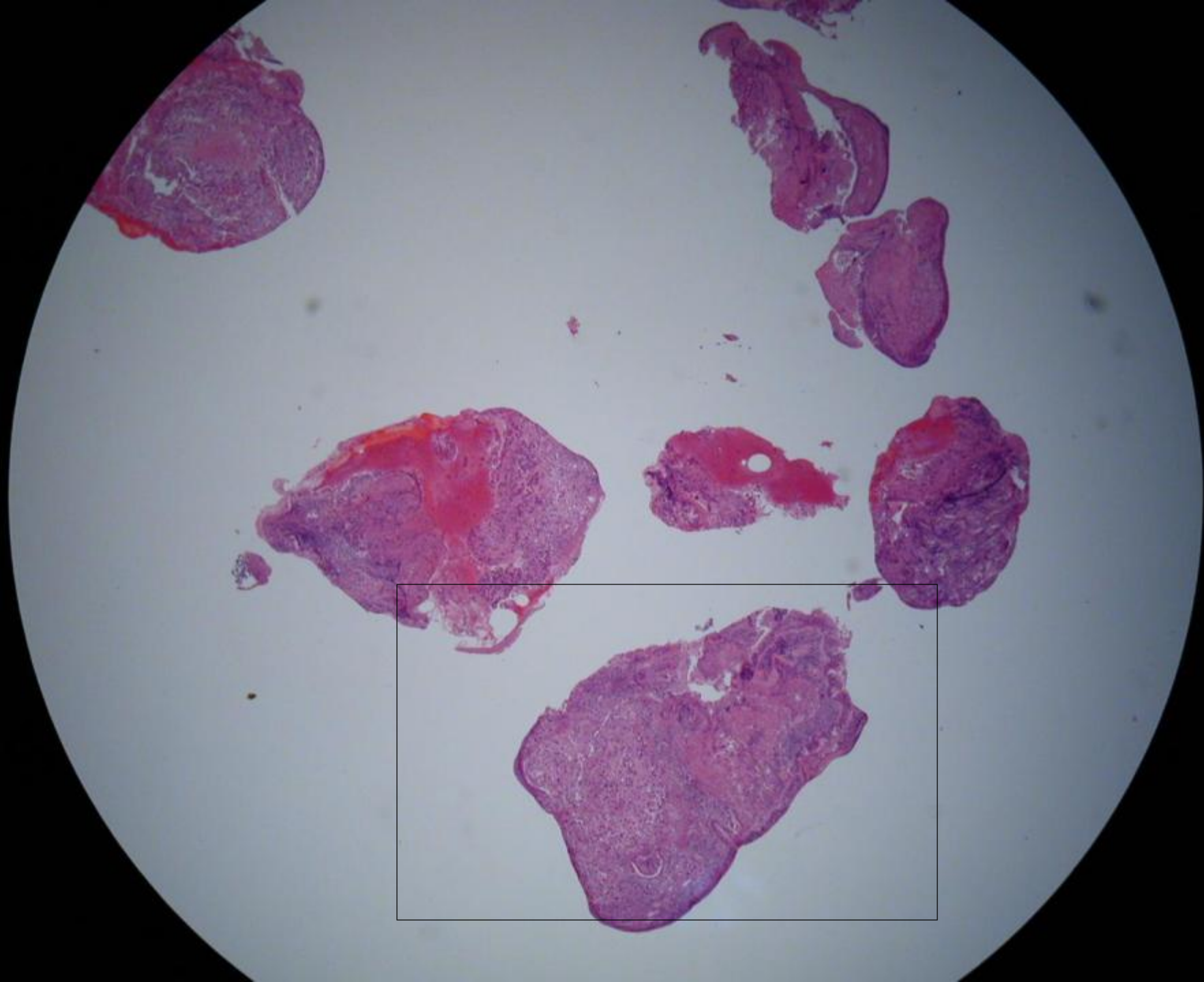
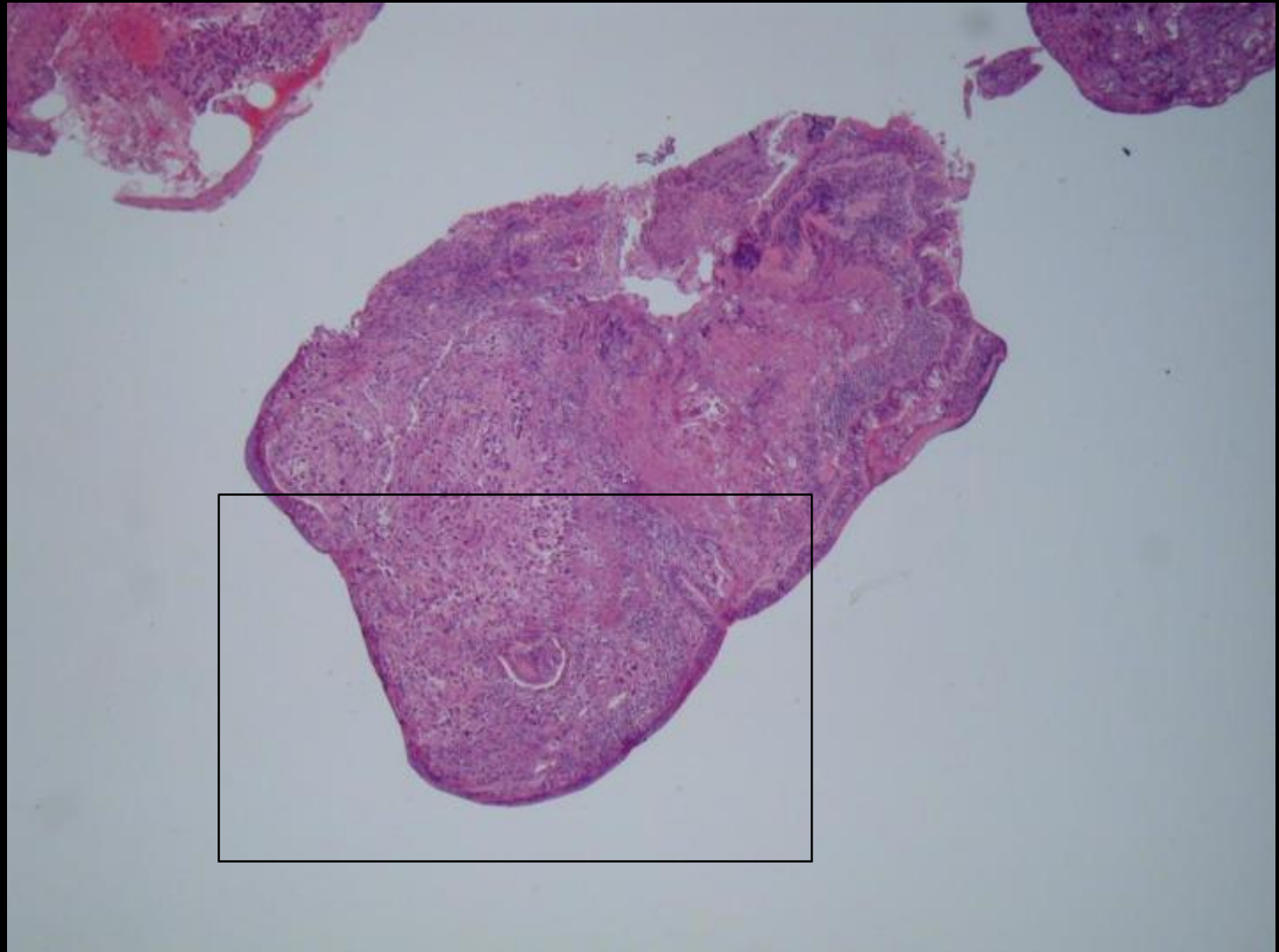
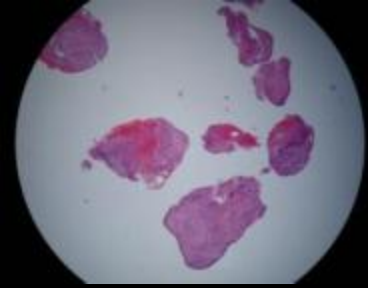


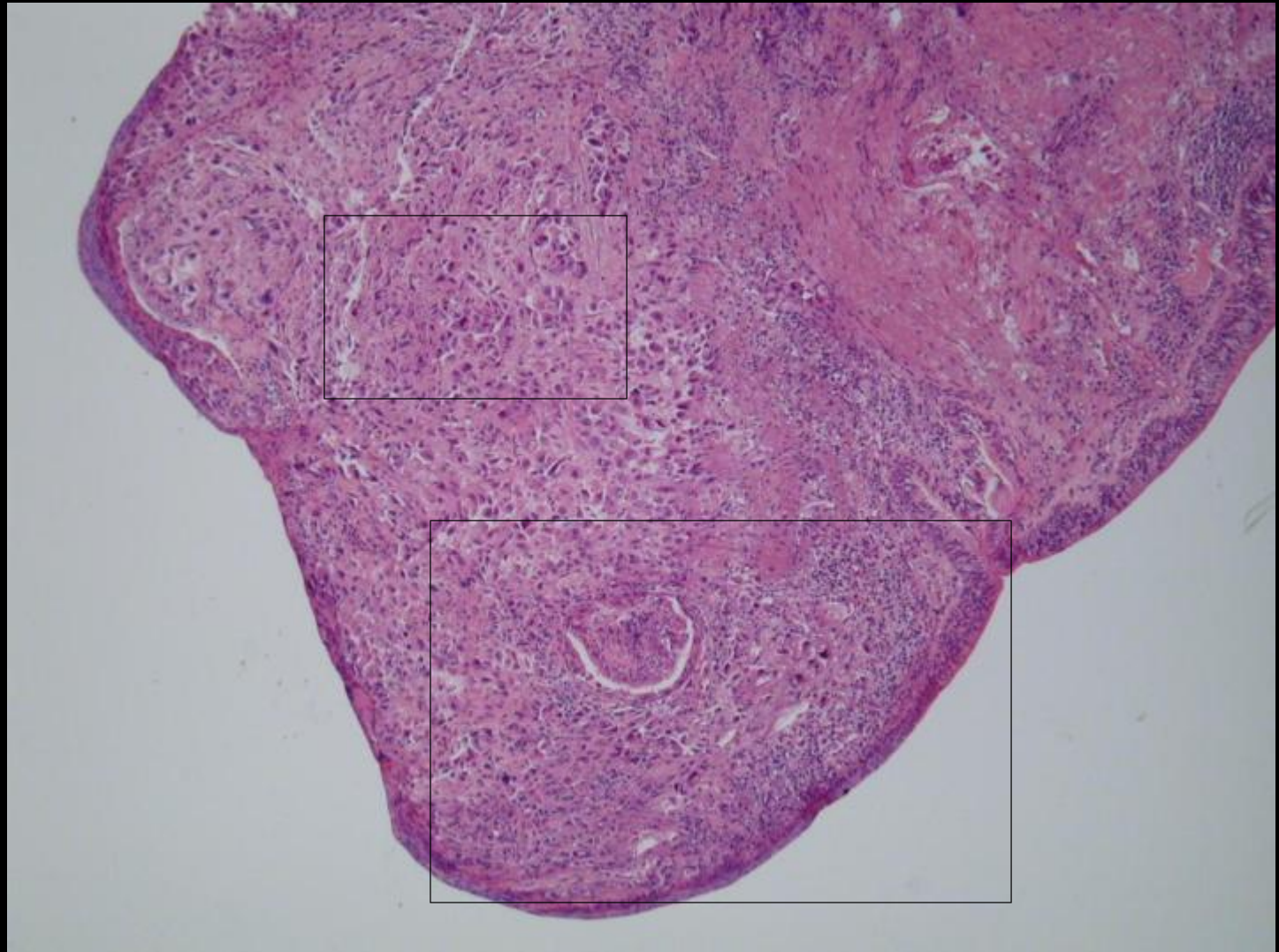
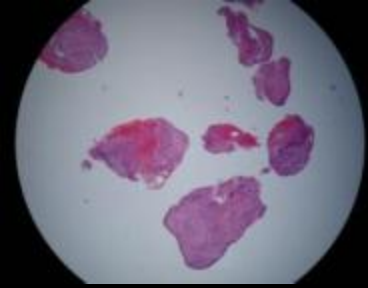
Lung mass, central

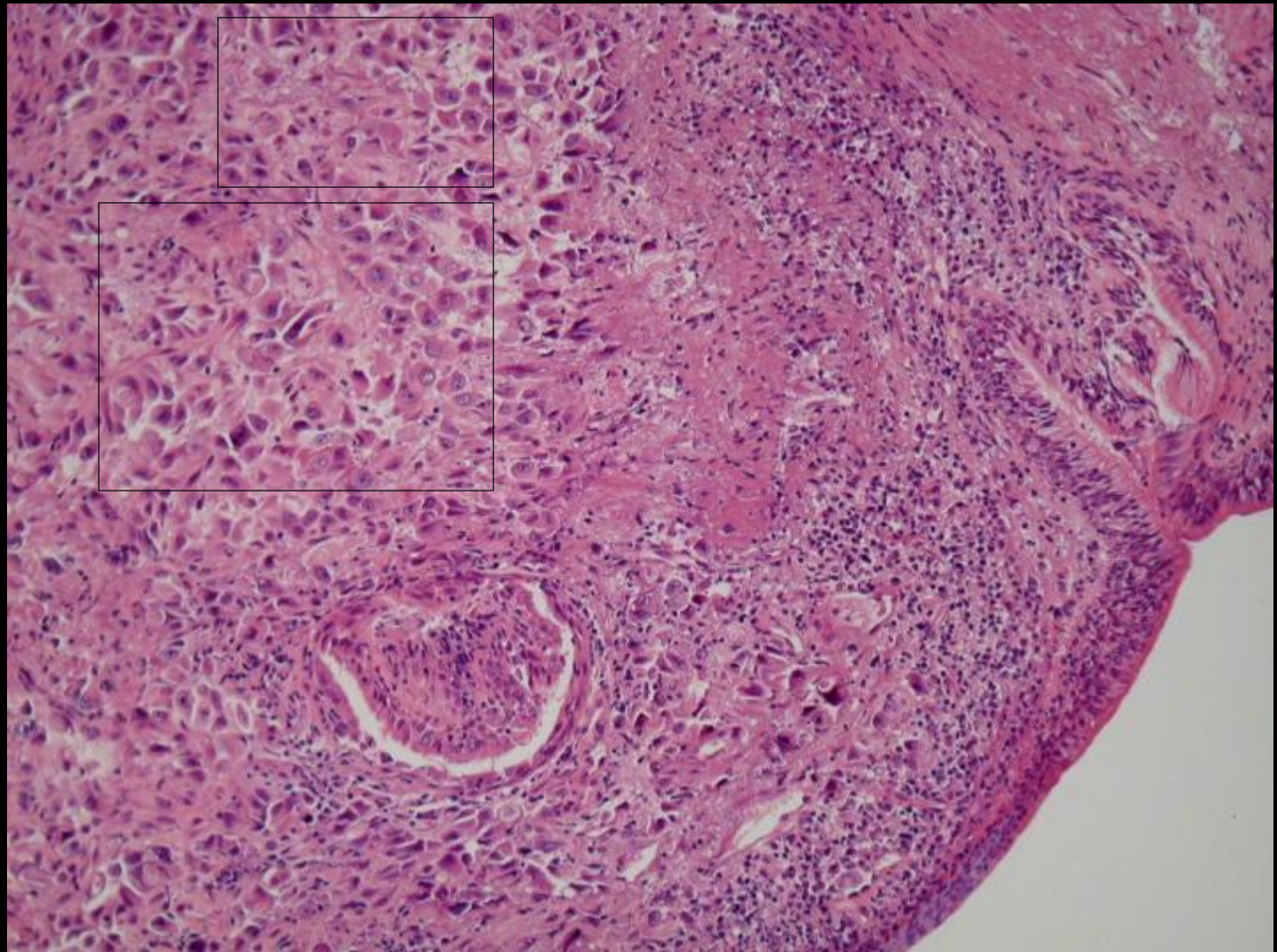
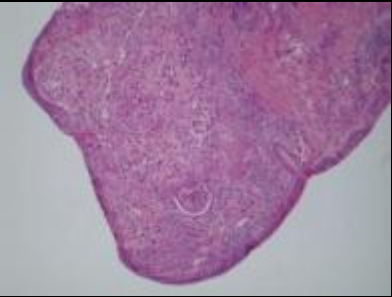
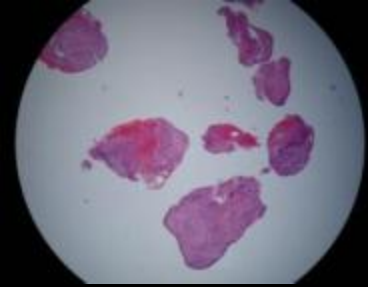
Endoscopic biopsy

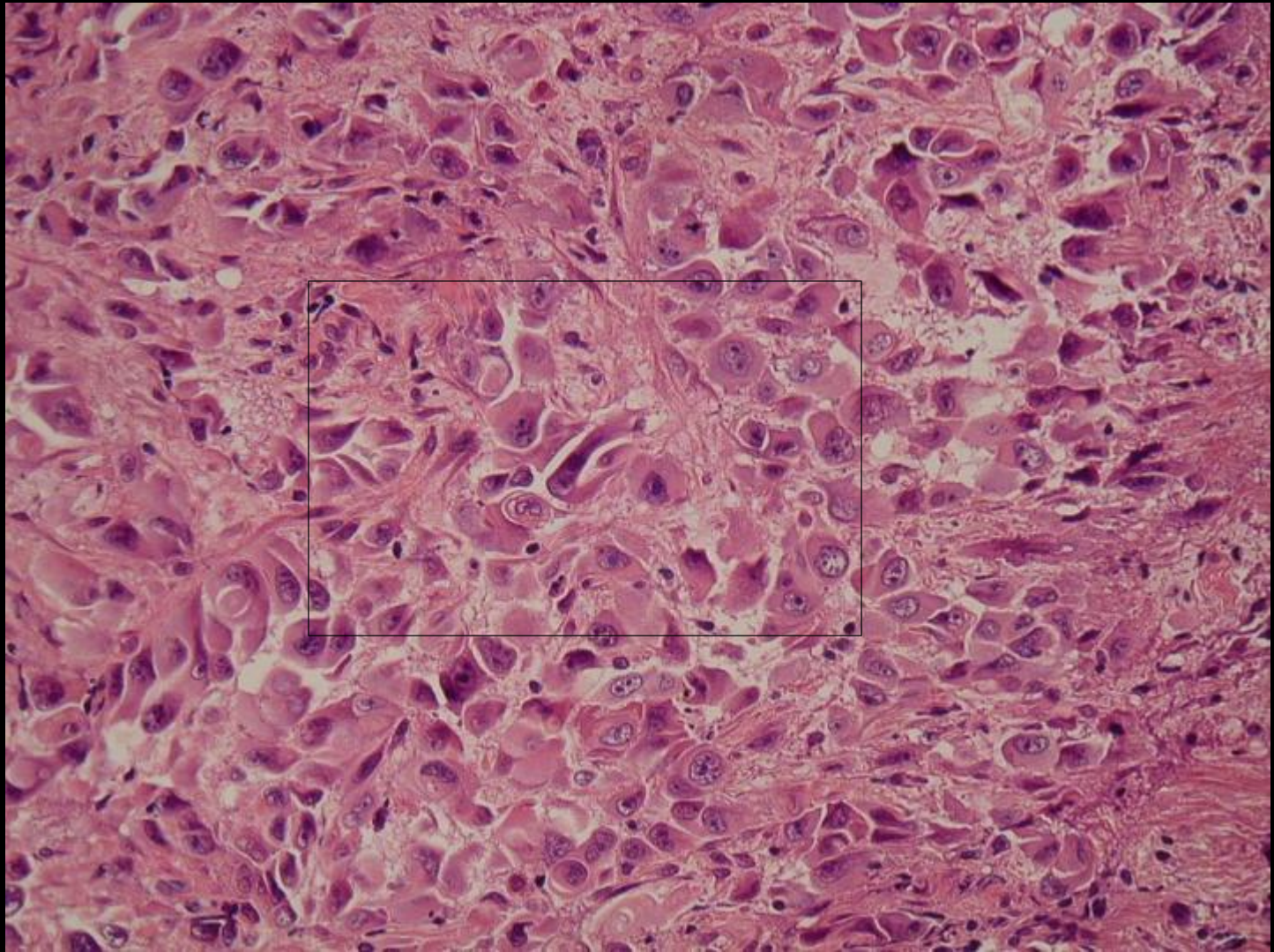
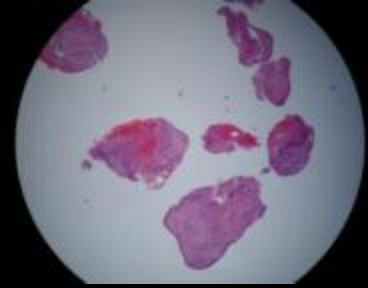
Gérard ABADJIAN
Damascus, May 2008

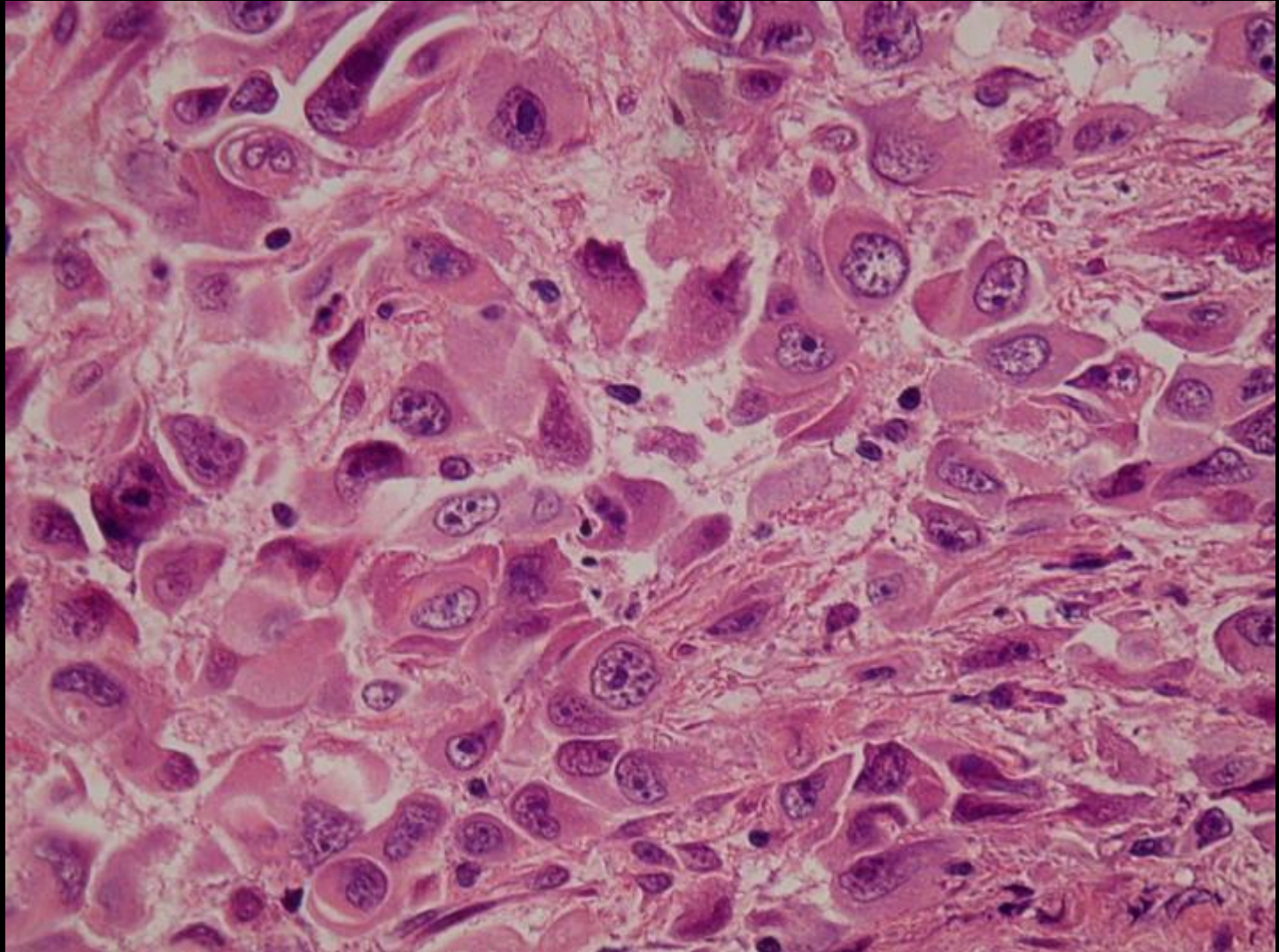
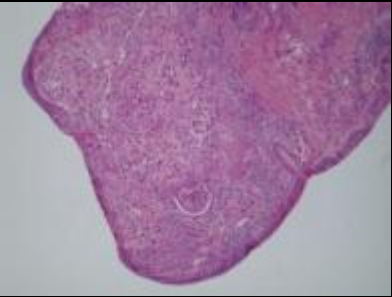
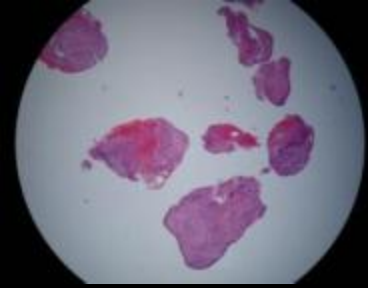






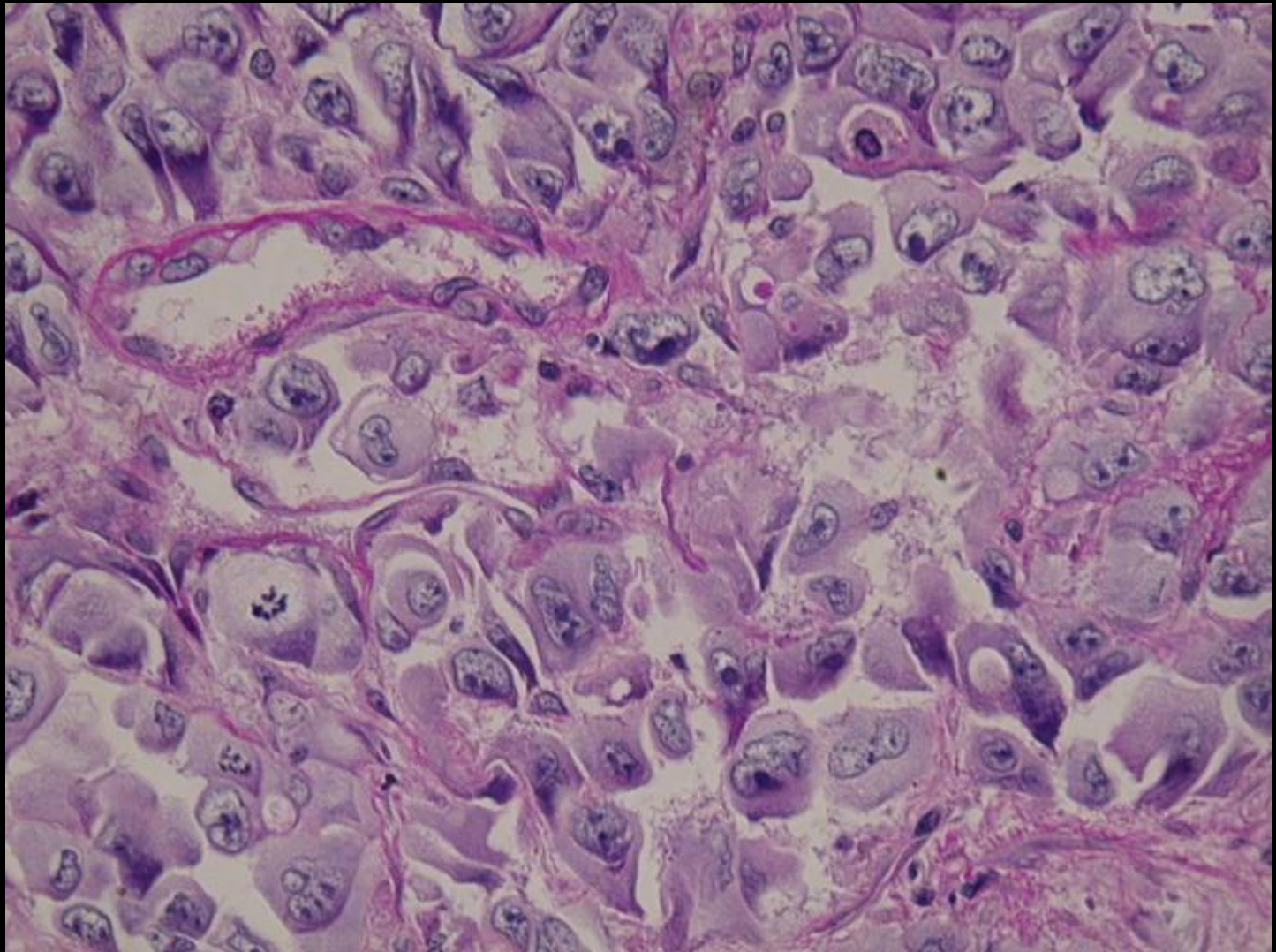
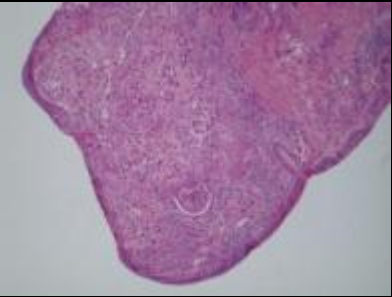
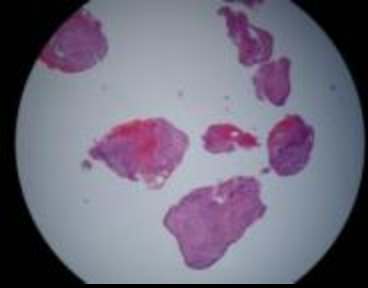




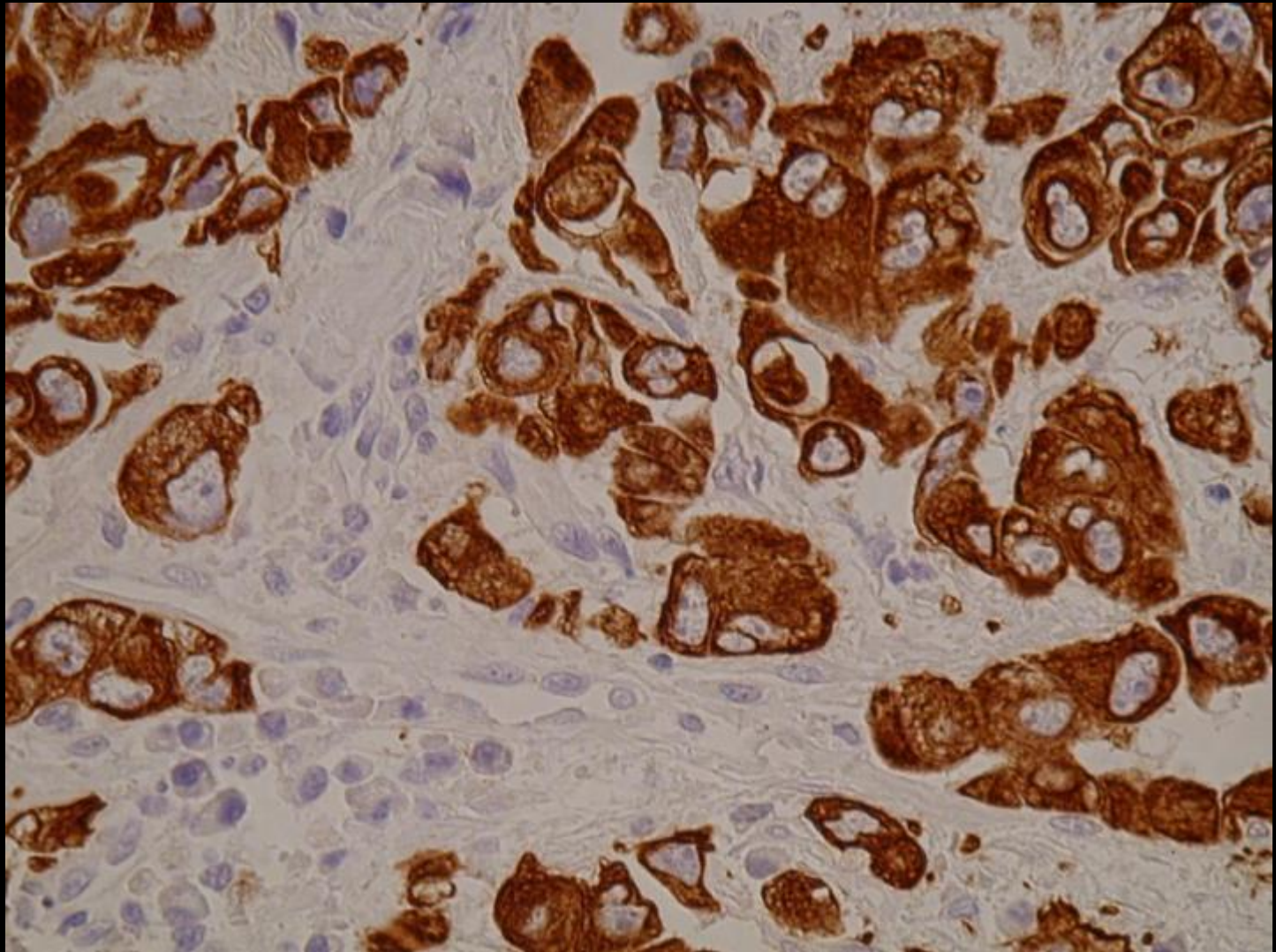
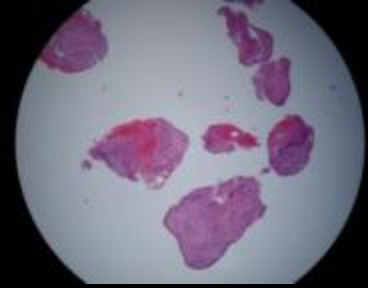


PAS

CK



CK
CK7
34bE12
TTF1



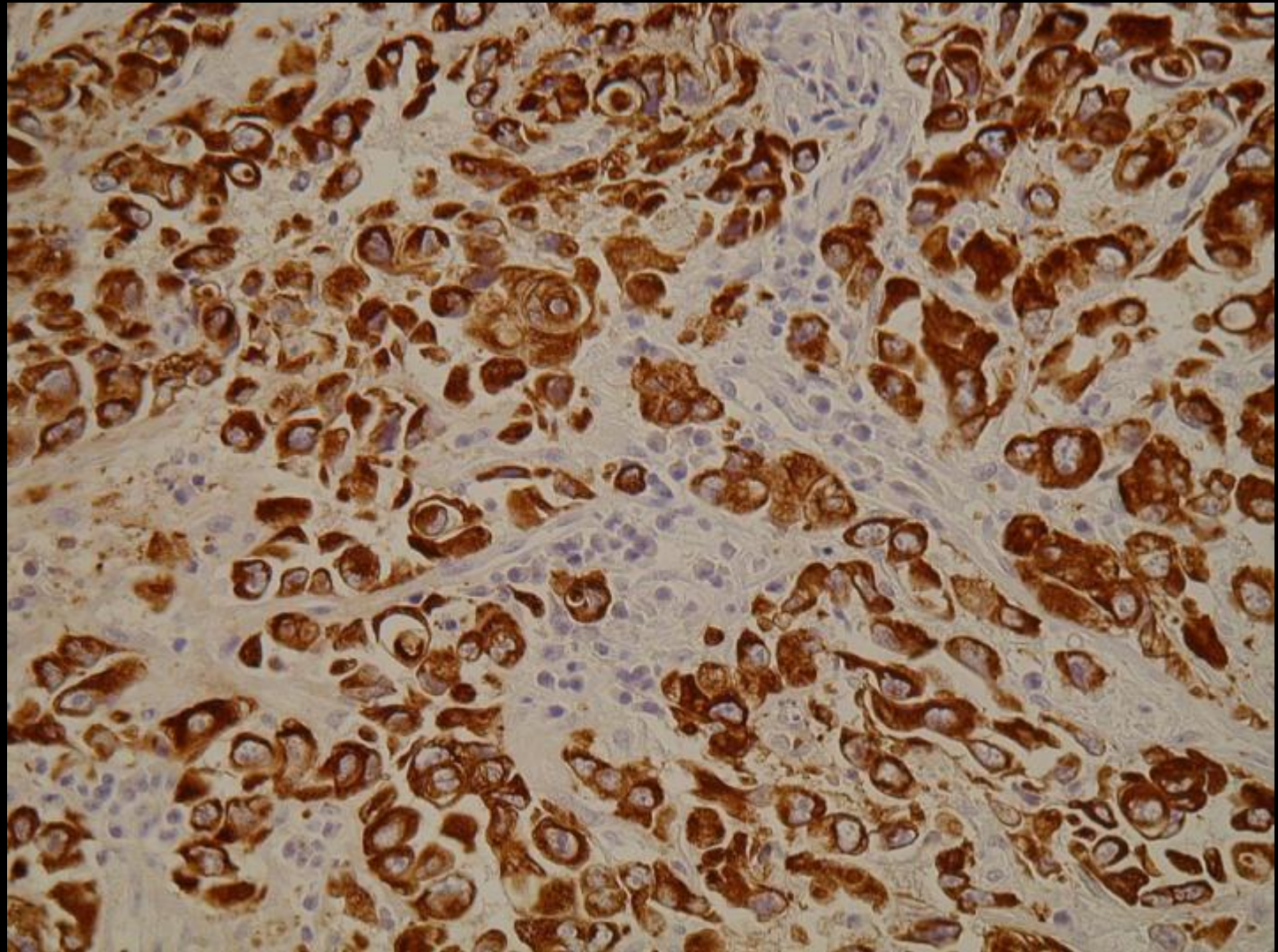
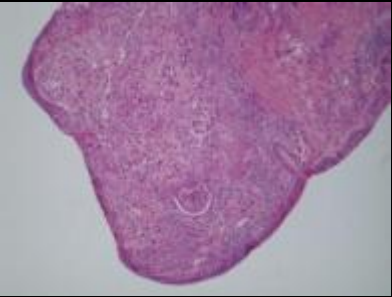
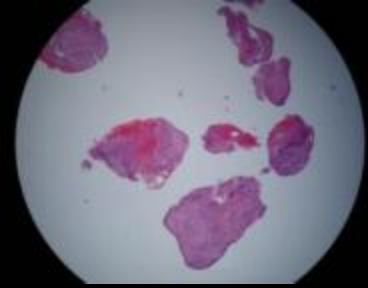
PAS

CK

CK7

34bE12

TTF1



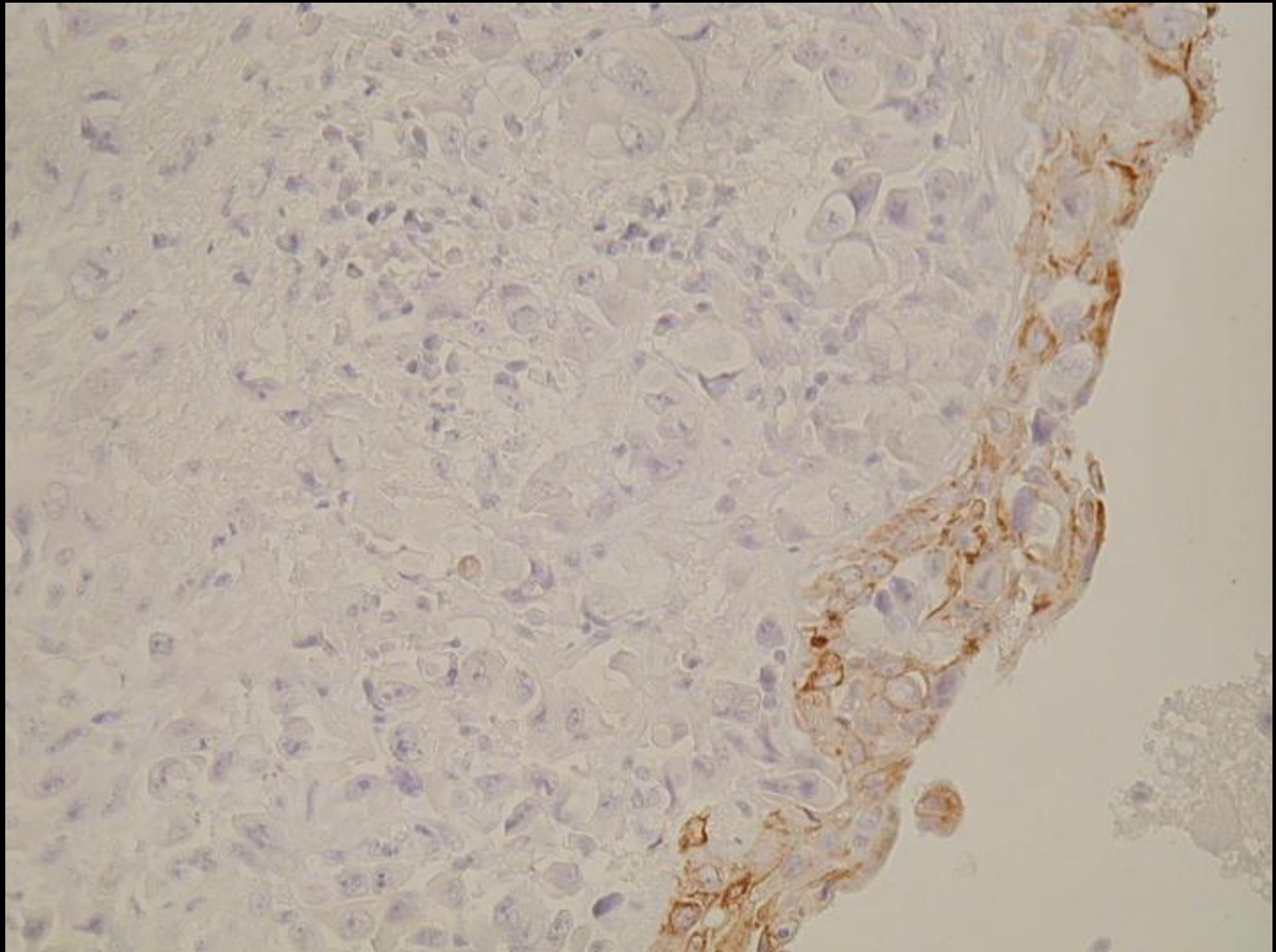
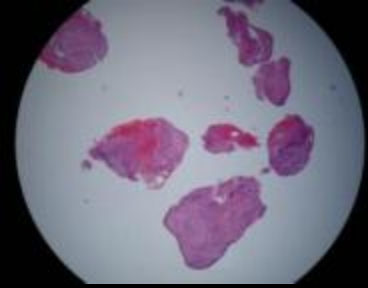
PAS

CK

CK7

34bE12

TTF1



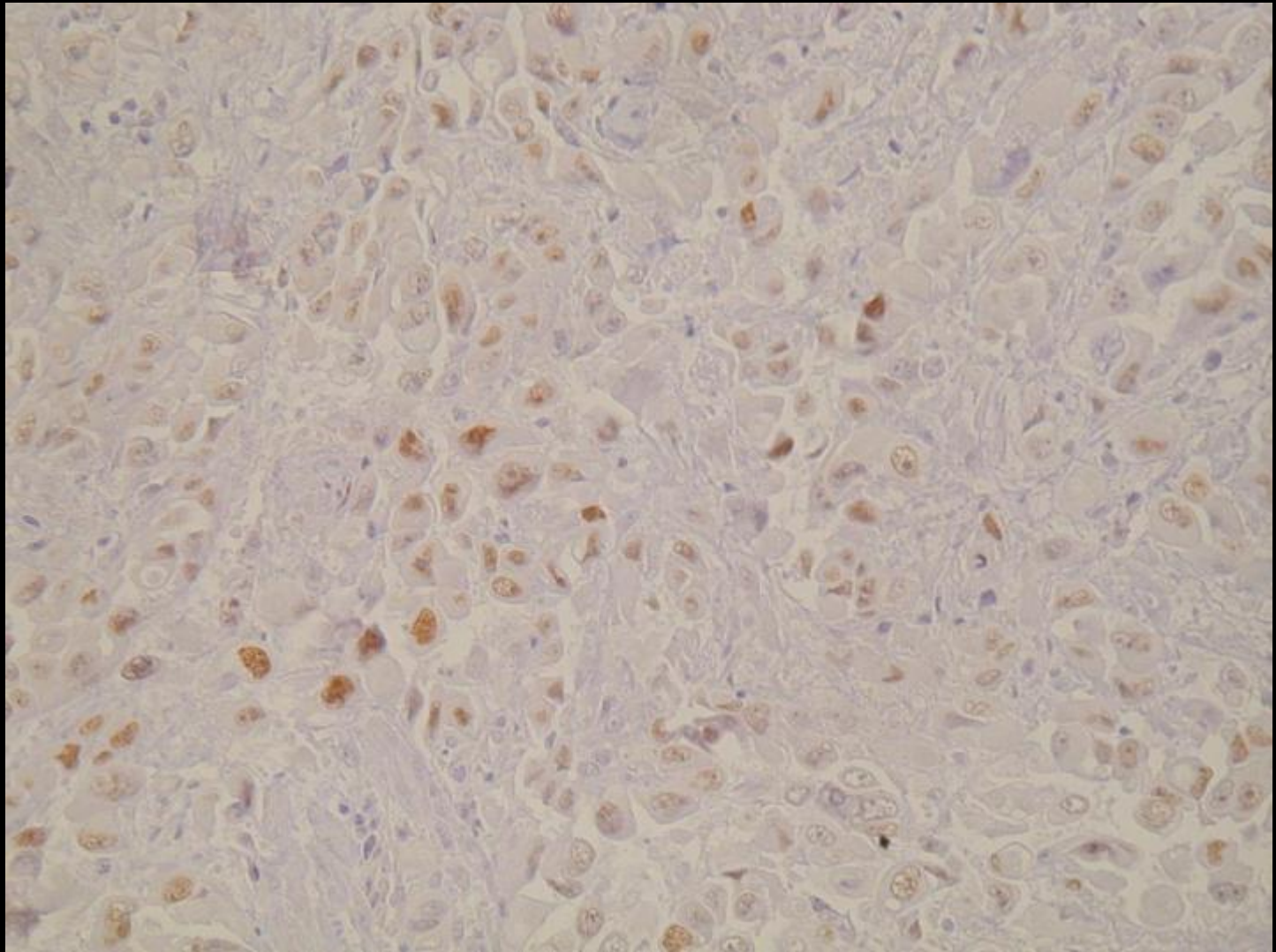
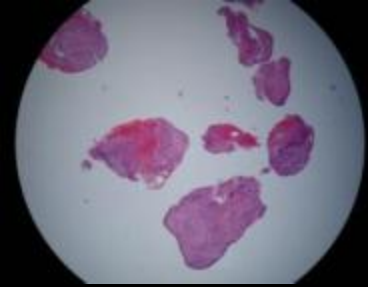
PAS

CK

CK7

34bE12

TTF1



PAS

CK

CK7

34bE12

TTF1

Diagnosis:

Adenocarcinoma, poorly differentiated