

# ***HISTOLOGIE GÉNÉRALE***

## ***LES ÉPITHÉLIUMS:***

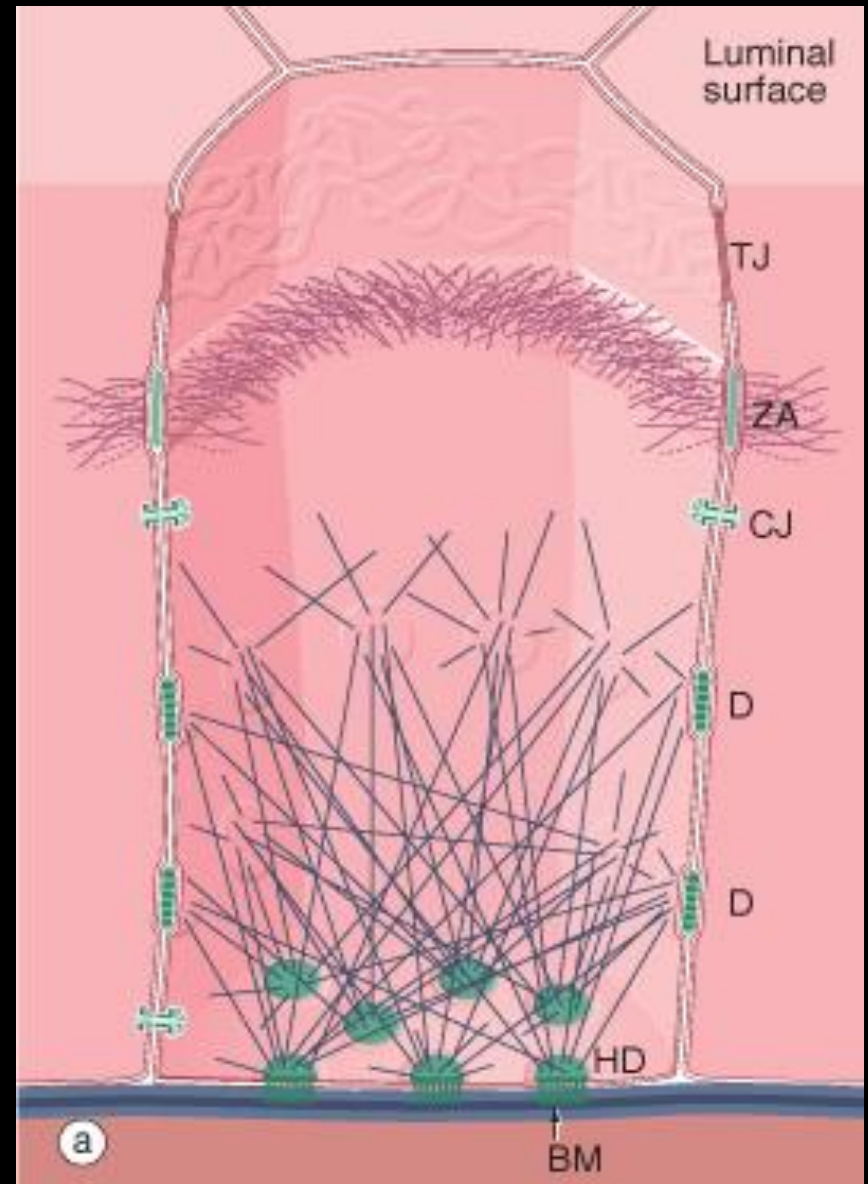
### ***SPÉCIALISATIONS MEMBRANAIRES***

# ***Epithéliums: Spécialisations membranaires***

- Membrane cytoplasmique: Barrière à perméabilité sélective
- Surface intercellulaire:
  - Jonctions intercellulaires
    - Zonula occludens: jonctions serrées, sous la surface lumineuse
    - Zonula adherens: liens des cytosquelettes adjacents (actine)
    - Macula adherens: Desmosomes (kératine)  
# (complexe jonctionnel)
  - Canaux de communications: jonctions communicantes (Gap junction) passage de petites molécules
- Surface lumineuse: Cils, Microvillosités, Stéréocils
- Surface basale: membrane basale, hémidesmosomes

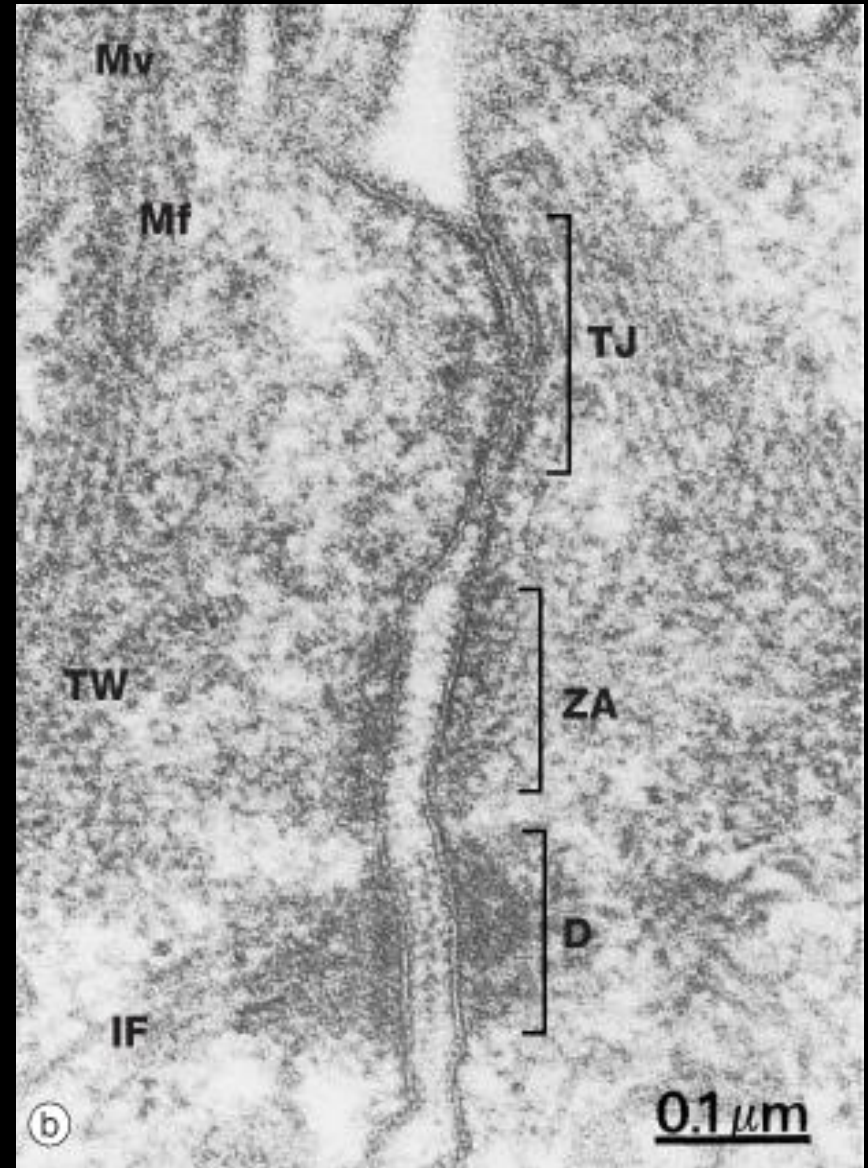
# ***Jonctions intercellulaires***

- Zonula occludens
- Zonula adherens
- Macula adherens
- Gap junction



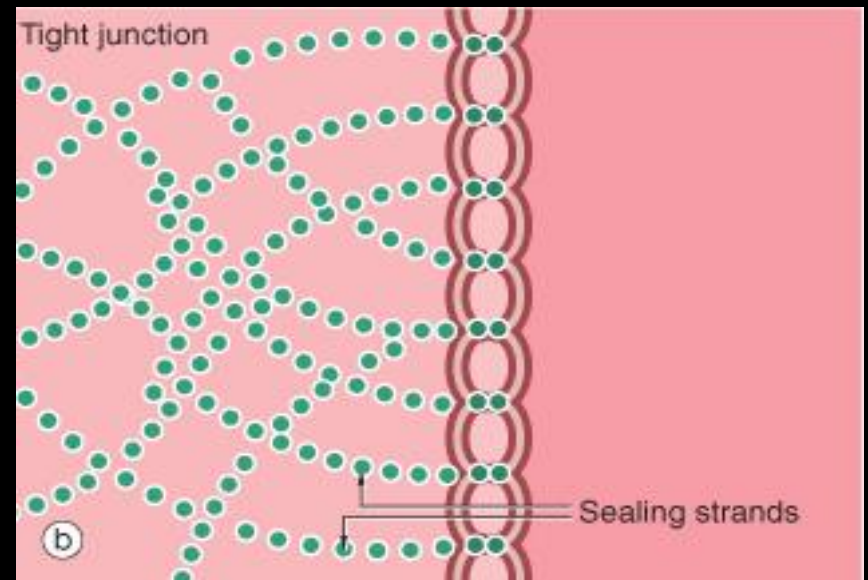
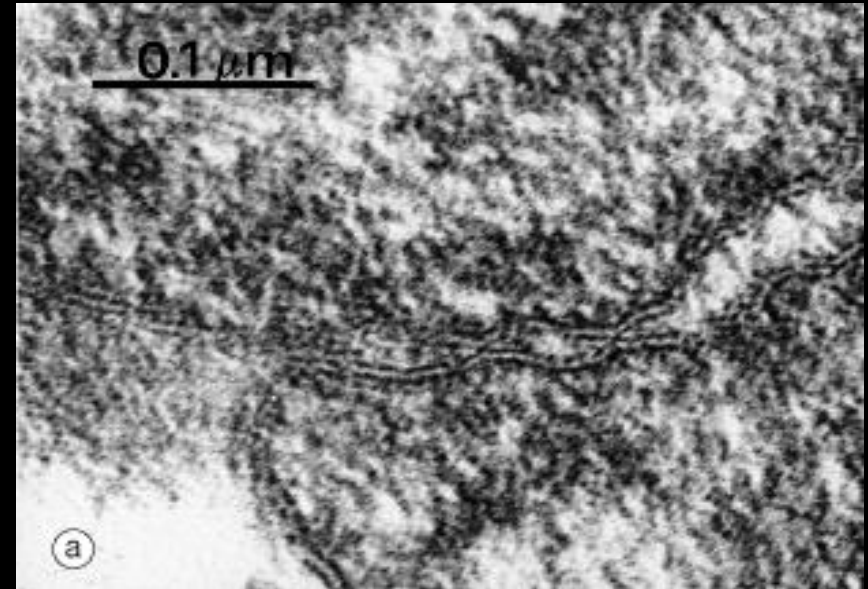
# ***Jonctions intercellulaires***

- Zonula occludens
- Zonula adherens
- Macula adherens
- Gap junction



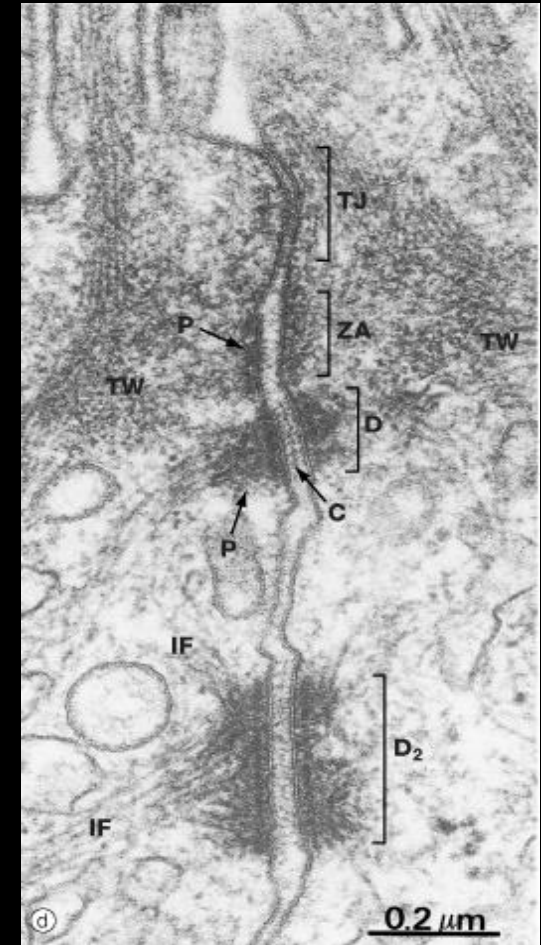
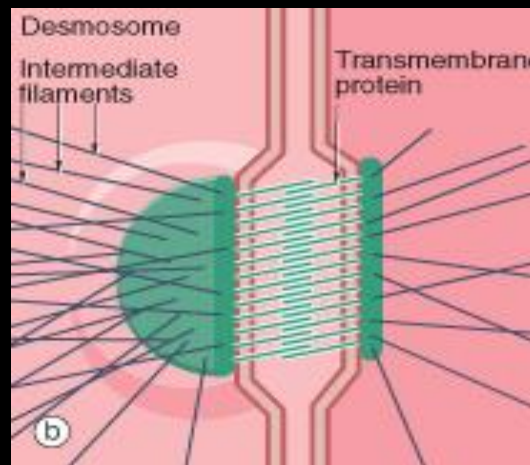
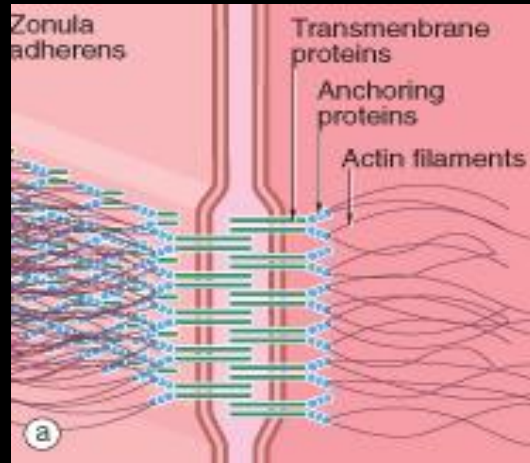
# ***Jonctions serrées***

- Zonula occludens:
  - Protéines transmembranaires (claudine) liées au cytosquelette (actine)
    - # « suture »
  - Maintien de la polarité cellulaire



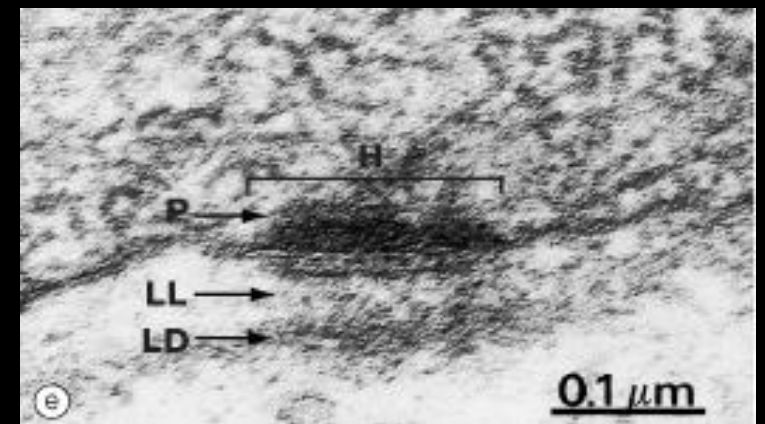
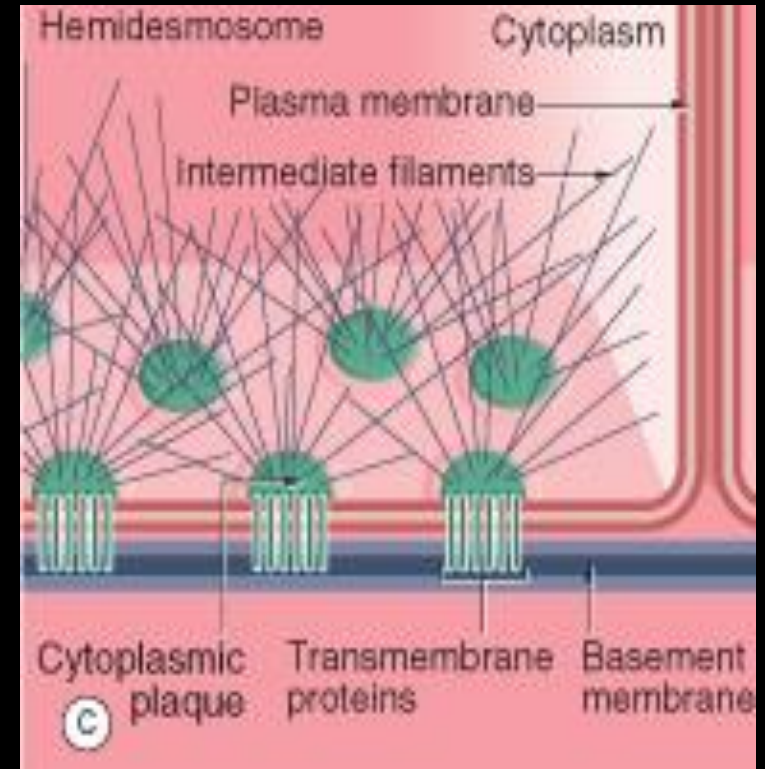
# ***Jonctions adhérentes***

- Zonula adherens:
  - Cadherines
  - Proteines d'encrage (catenines, vinculine,  $\alpha$ -actinine)
  - Actine
- Desmosome:
  - Cadherines
  - Proteines d'encrage (Desmoplakine, plakoglobine)
  - Keratine

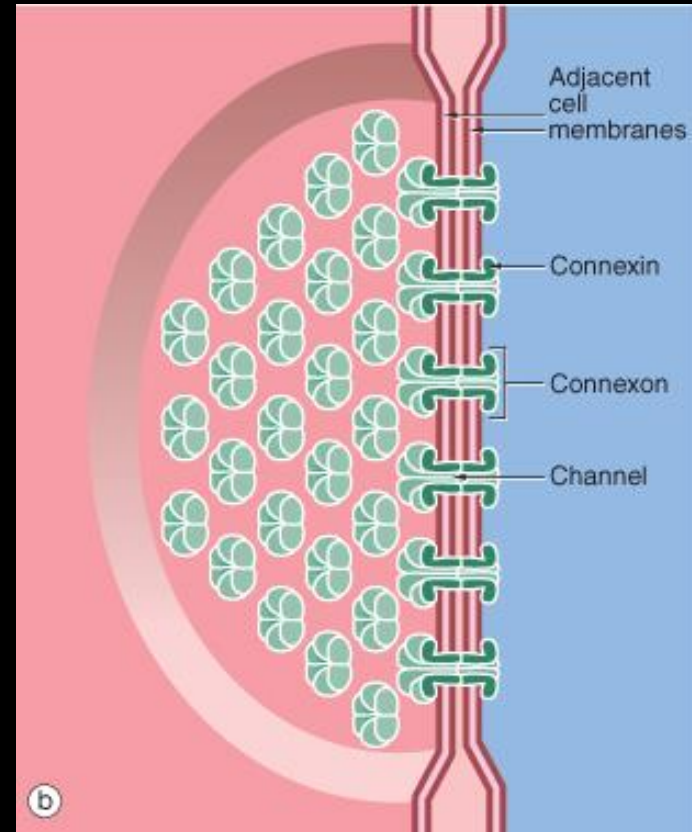
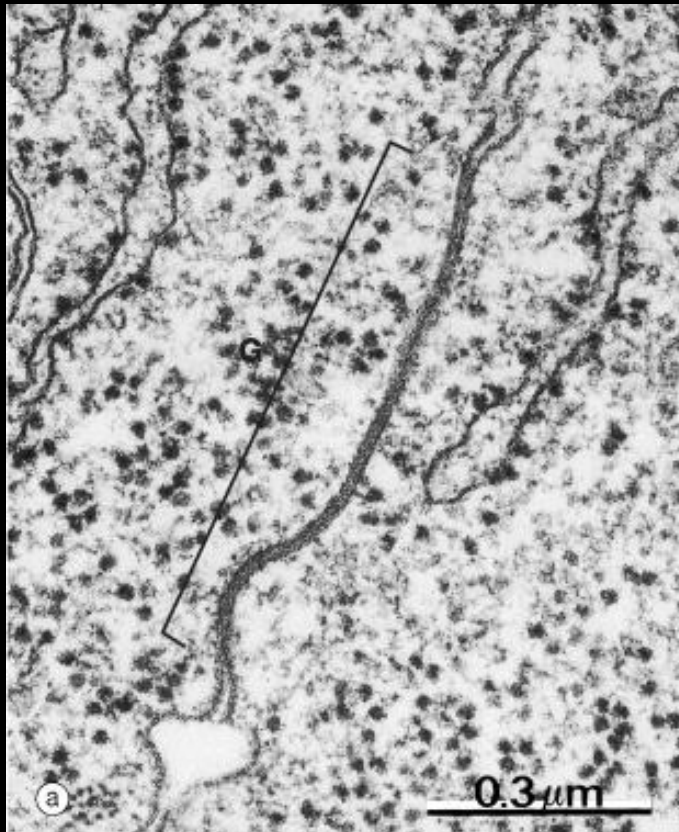


# ***Jonctions adhérentes***

- Hemidesmosome:
  - Intégrines
  - Laminines (membrane basale)
  - Kératines



# ***Jonctions communicantes (Gap junctions)***



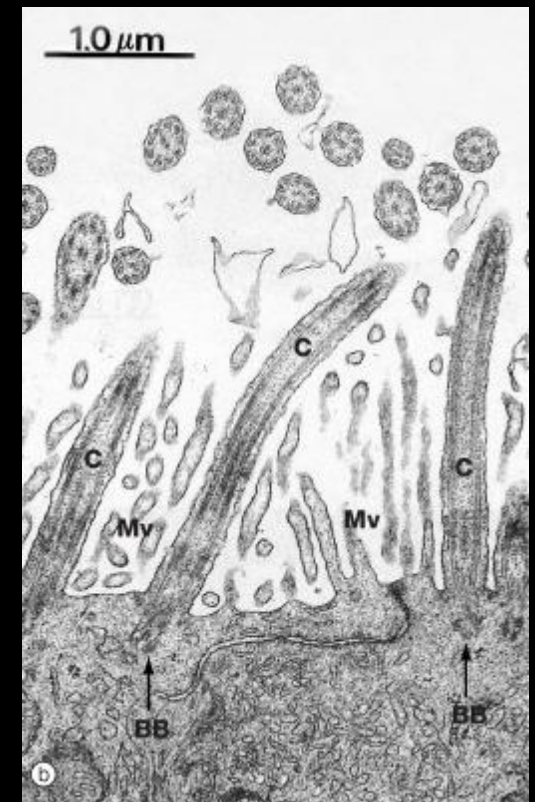
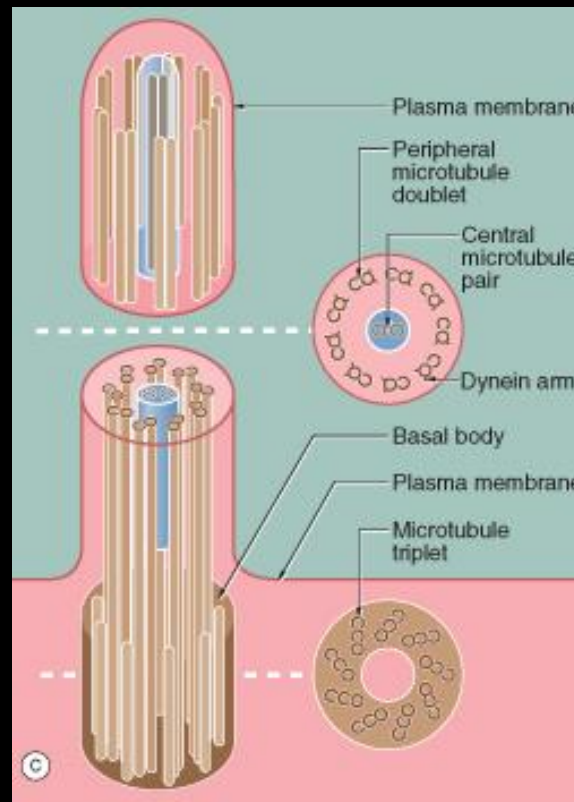
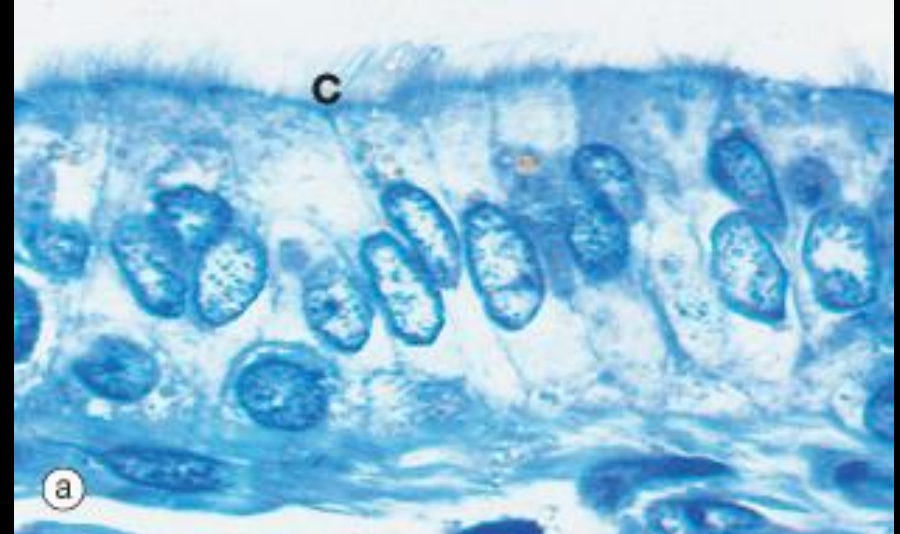
- Canaux transmembranaires (connexons= protéines transmembranaires, connexines) : passage d'ions inorganiques, et petites molécules.
- Rôle probable dans le contrôle de la croissance, développement, reconnaissance et différenciation cellulaires.
- Ouverture des connexons: [Ca], pH, ou signal extracellulaire.



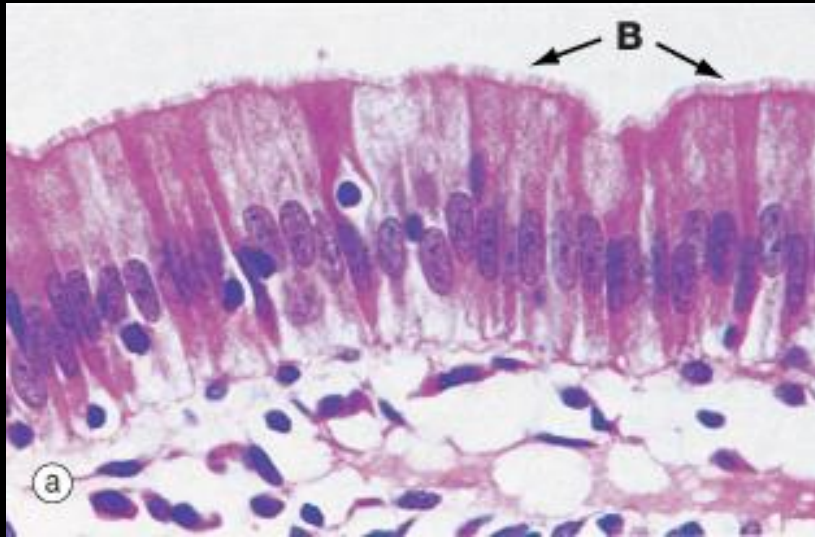
# Surface lumineuse: Cils

Tractus respiratoire et génital féminin

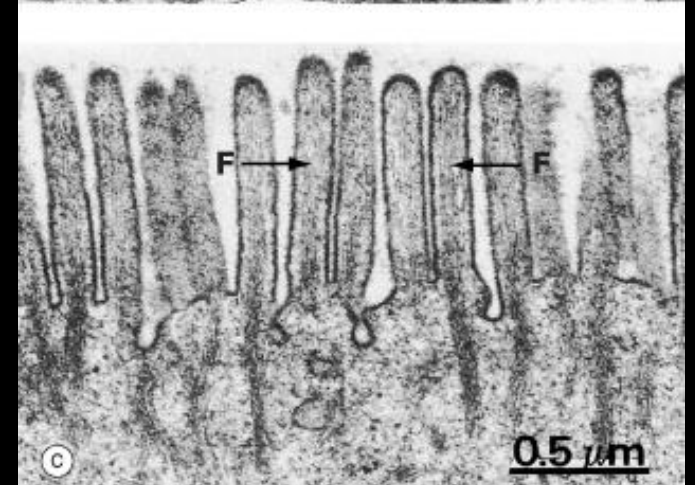
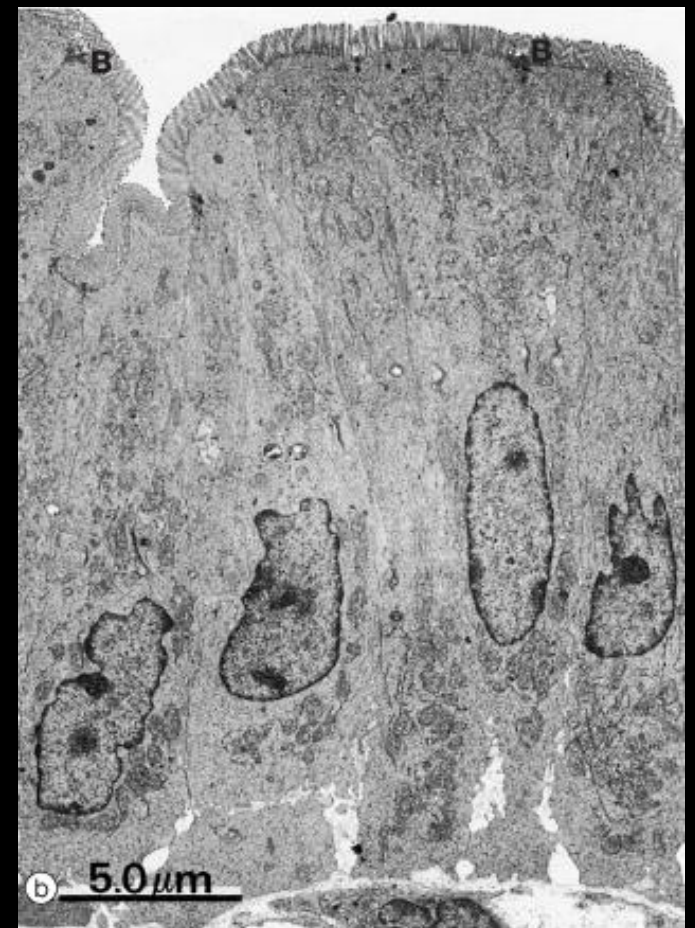
Axe central, microtubules.



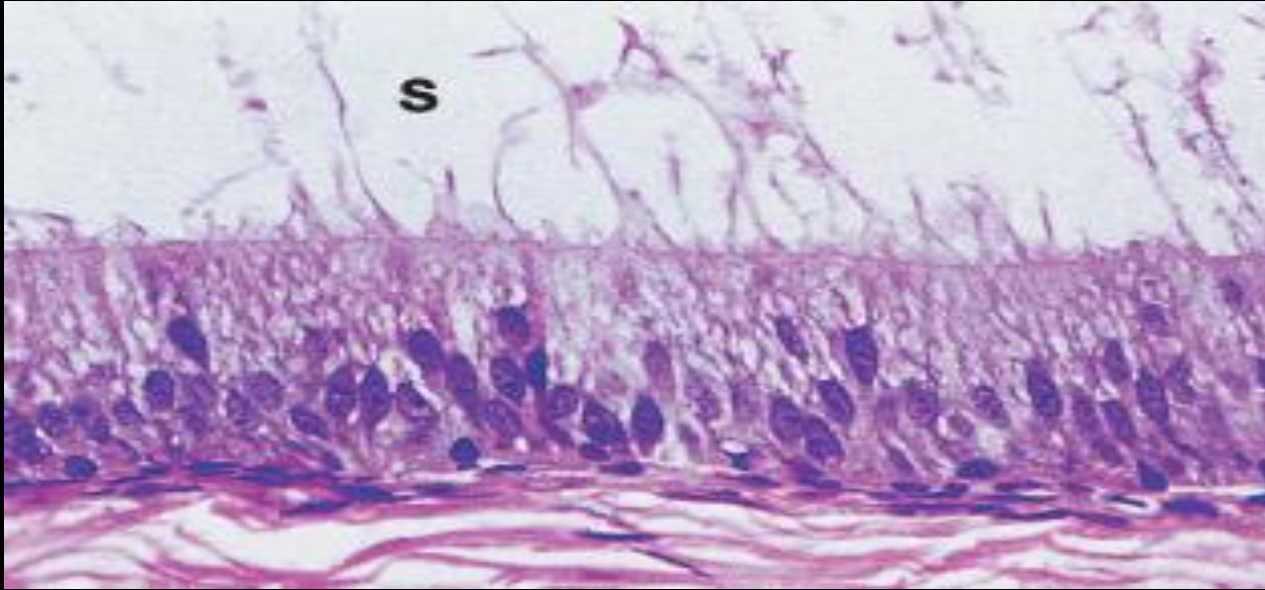
## Surface luminale : Microvillosités



- Surfaces d'absorption: intestin grêle
- 3000/cellule: bordure en brosse, striée
- Actine

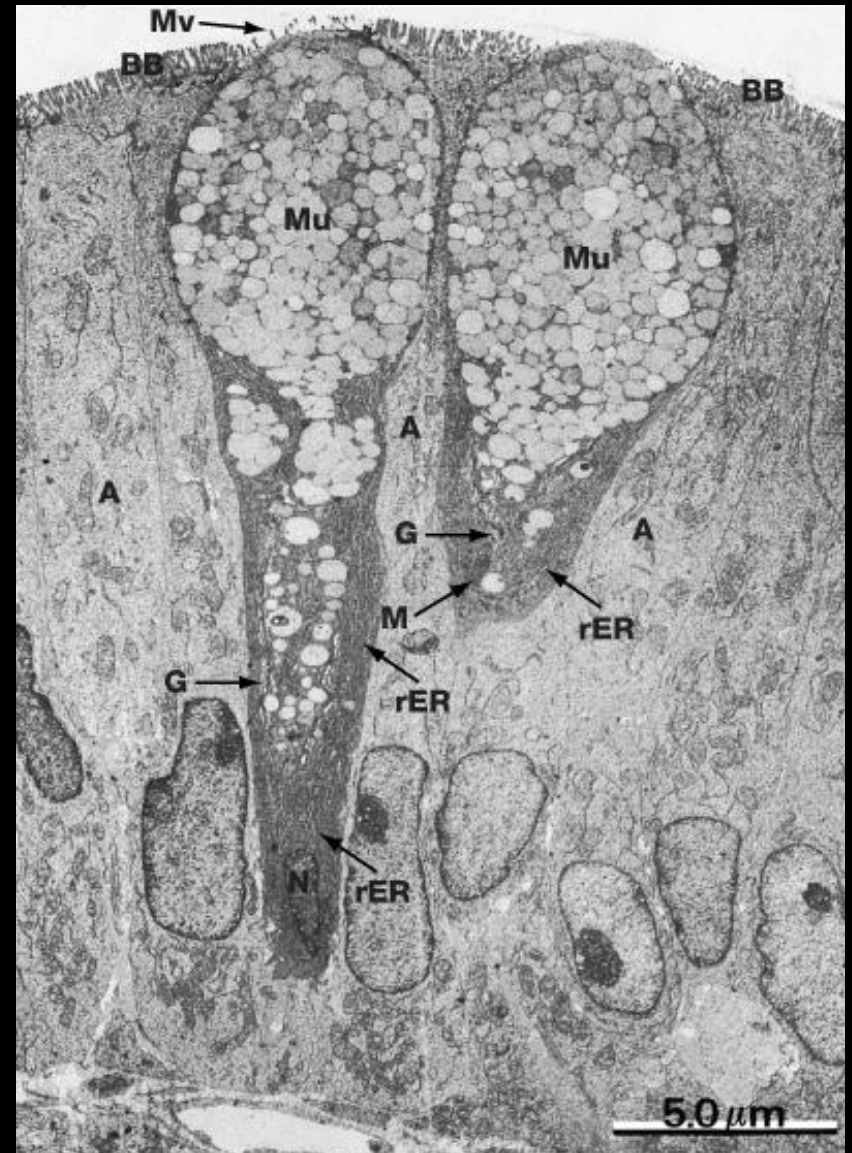
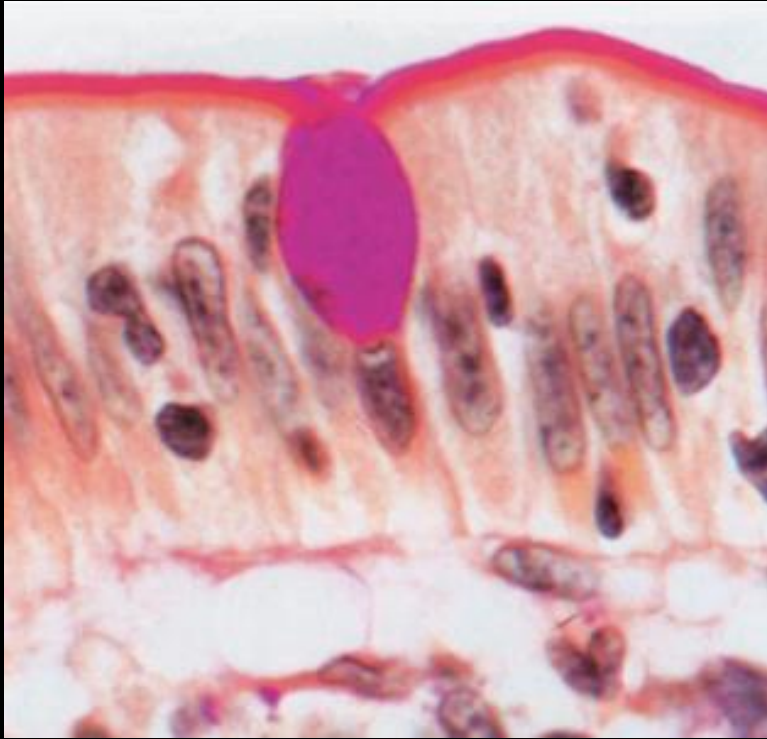


## ***Surface luminale : Stéréocils***



Microvillosités

# Cellules Caliciformes



- Synthèse et sécrétion de mucus
- Proteoglycanes acide et neutre

Réalisation

Gérard ABADJIAN

Beyrouth

Le 7 Février 2007

Copy Prohibited ®

of a database is the record. A record is a collection of related data treated as a single entity. For example, a hockey trading card could be called a record: it brings together the name, photograph, team, and statistics of one player. Using database terms, each of these related pieces of information is called a *field*: each card *record* has a name field, field, and various player statistics fields The building block of a database is the record. A record is a\_

This appendix is intended for users who have little or no experience working with databases or database connections. It explains general concepts, not specific procedures. To see how these concepts apply in practice, see the rest of the help system.

This appendix is intended for users who have little or no experience working with databases or database connections. It explains general concepts, not specific procedures. To see how these concepts apply in practice, see the rest of the help system.

This appendix is intended for users who have little or no experience working with databases or database connections. It explains general concepts, not specific procedures. To see how these concepts apply in practice, see the rest of the help system.

This appendix is intended for users who have little or no experience working with databases or database connections. It explains general concepts, not specific procedures. To see how these concepts apply in practice, see the rest of the help system.

**Fin**

**The End**

**Merci**

**de votre attention.**

Are you still trying to read this non sense?