

# ***HISTOLOGIE GÉNÉRALE***

## ***LES ÉPITHÉLIUMS***

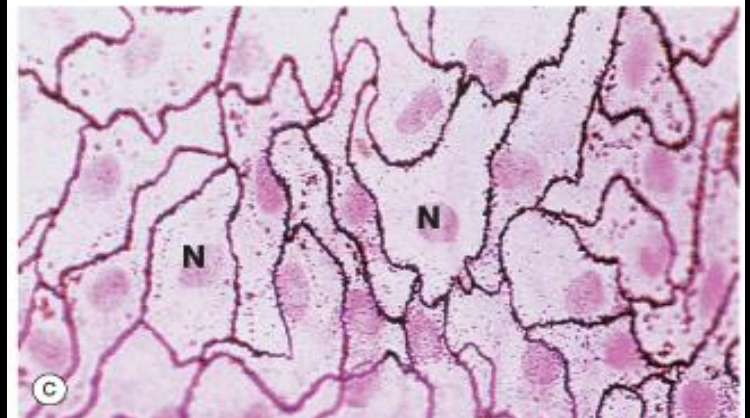
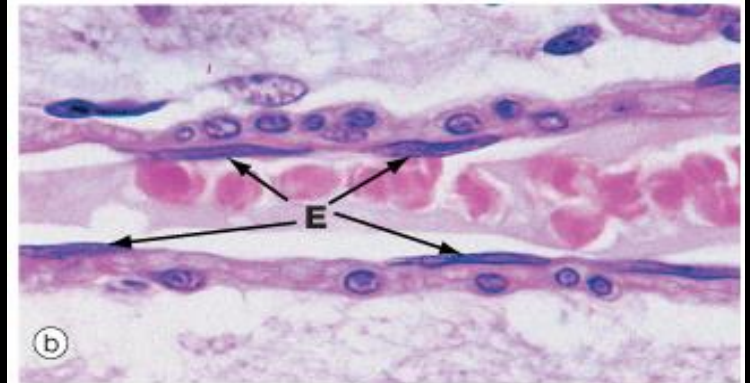
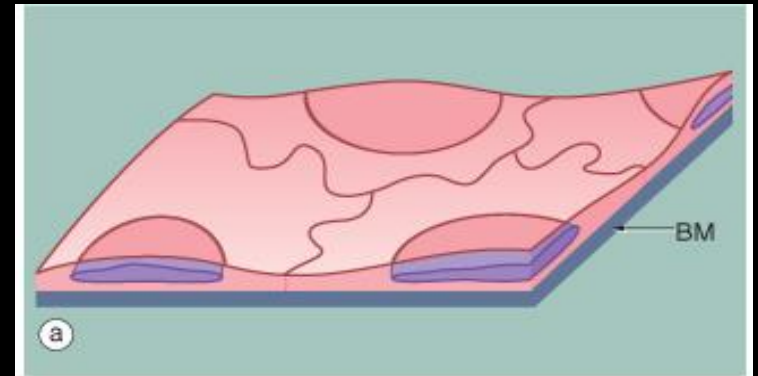
*Gérard ABADJIAN  
Hôtel-Dieu de France  
Faculté de Médecine  
USJ - 2007*

# *Classification des Epithéliums*

- Épithéliums de surface:
  - Nombre de couches: Simple, Stratifié
  - Forme des cellules: pavimenteuse, cubique, cylindrique.
  - Présence d'une différenciation (spécialisation)
- Organes solides: Exocrine, endocrine.

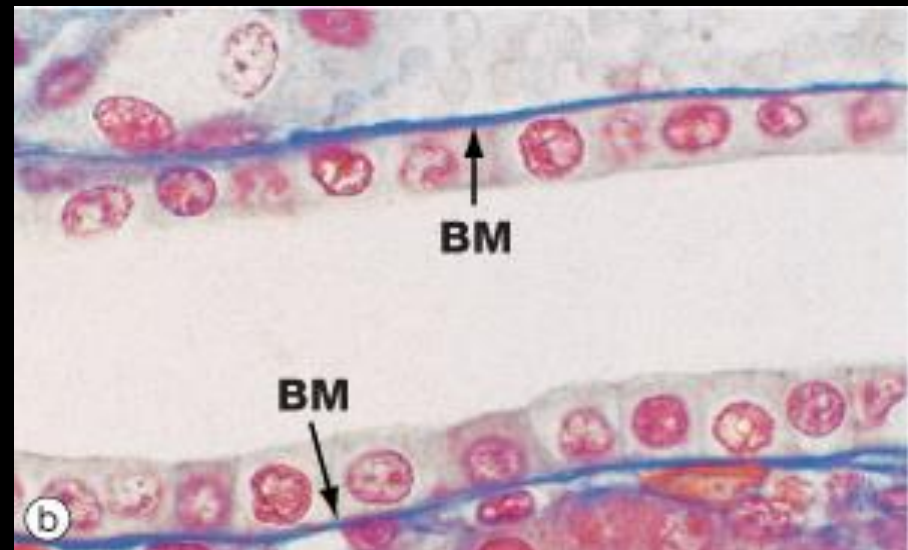
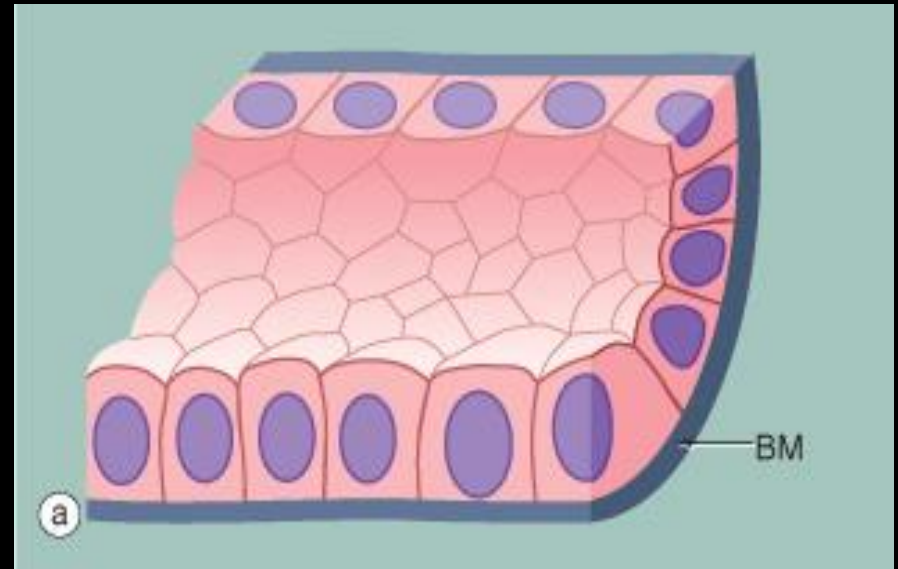
# *Épithélium pavimenteux simple*

- Épithélium pavimenteux
- Interfaces de diffusion sélective, absorption, et/ou sécrétion.
- Poumons
- Capillaires
- Plèvre, péricarde, et péritoine.



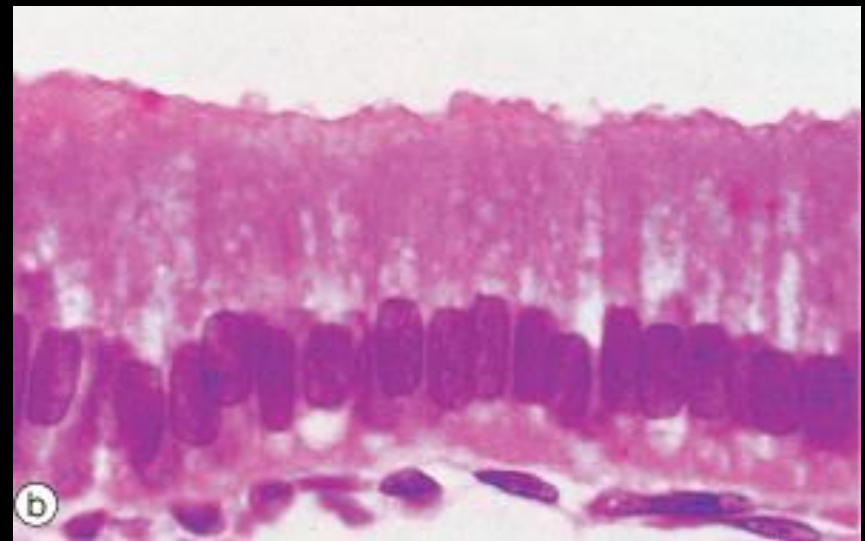
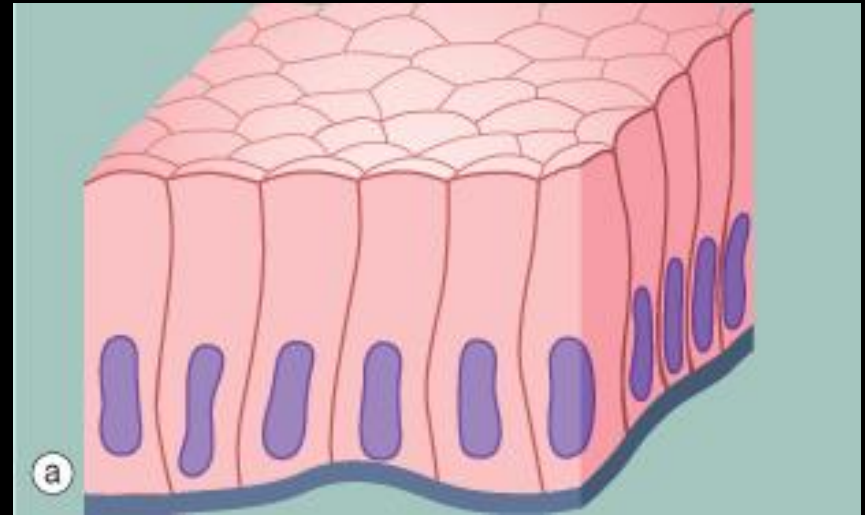
# Épithélium cubique simple

- Canaux et tubes
- Rein
- Glandes salivaires
- Pancréas



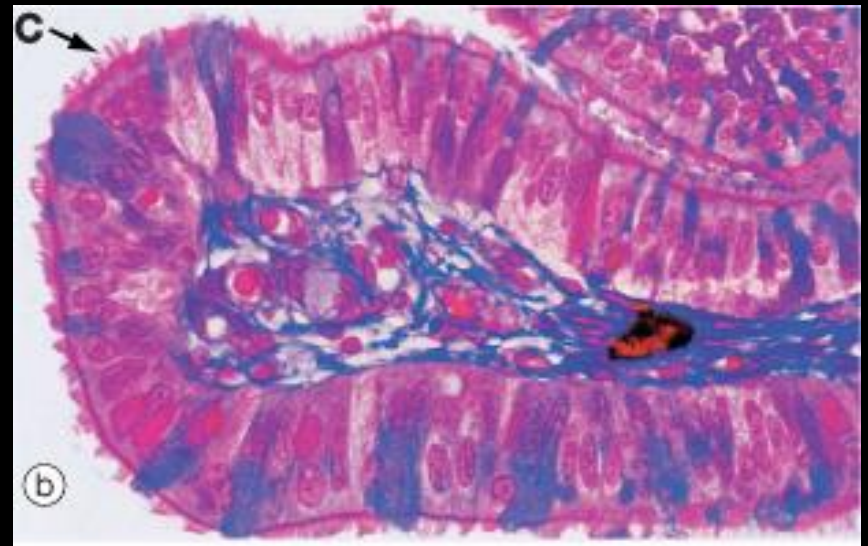
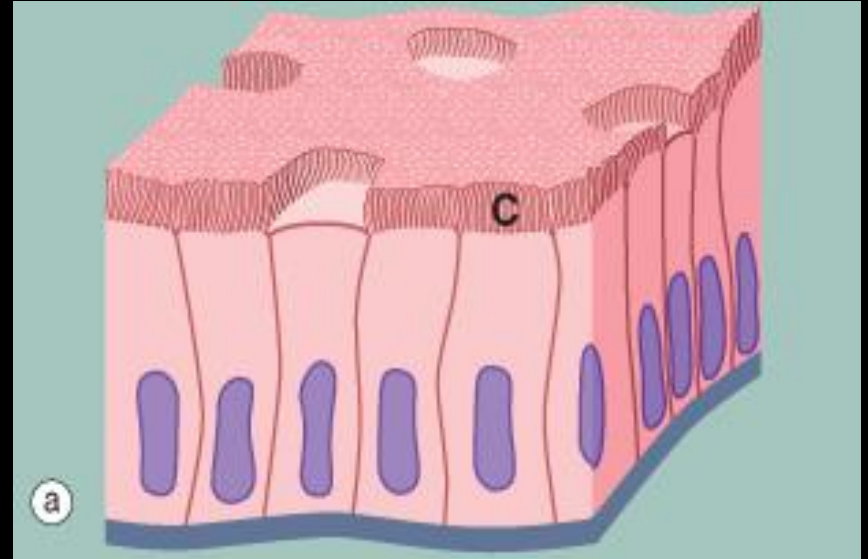
# Épithélium cylindrique simple

- Cellules prismatiques
- Polarité
- Intestin grêle
- Vésicule biliaire



# Épithélium cylindrique simple cilié

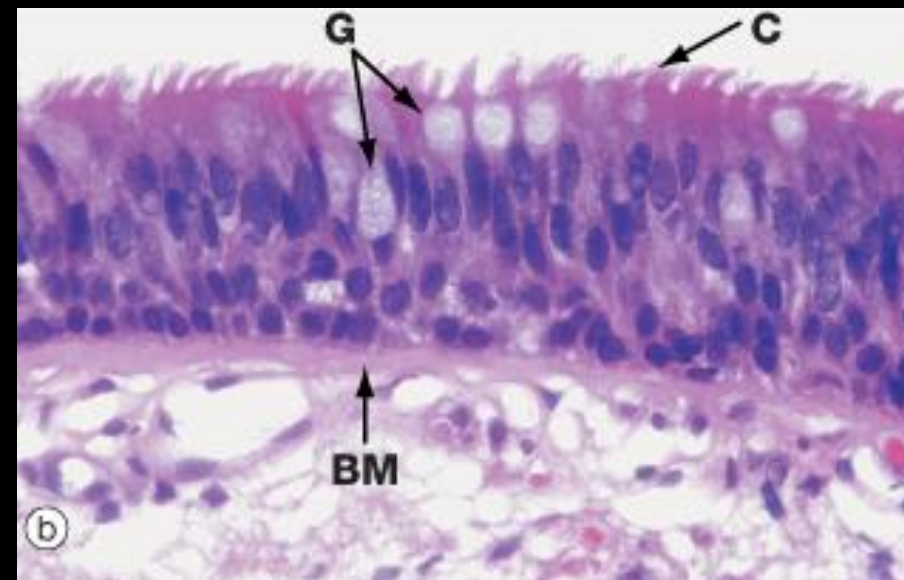
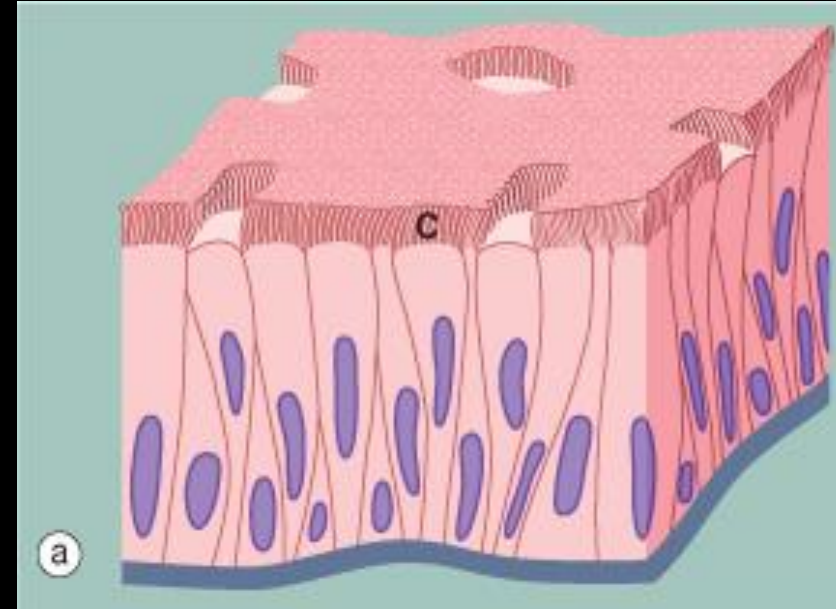
- Projection digitiforme de la membrane cytoplasmique
- X 300
- Battement en vague
- Tractus génital féminin





# Épithélium cylindrique pseudostratifié cilié

- Noyaux à différents niveaux
- Voies respiratoires (épithélium respiratoire)

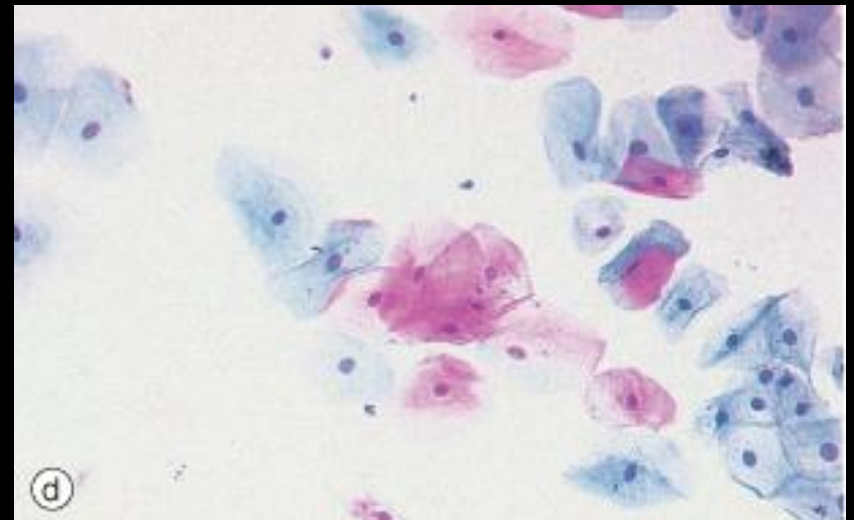
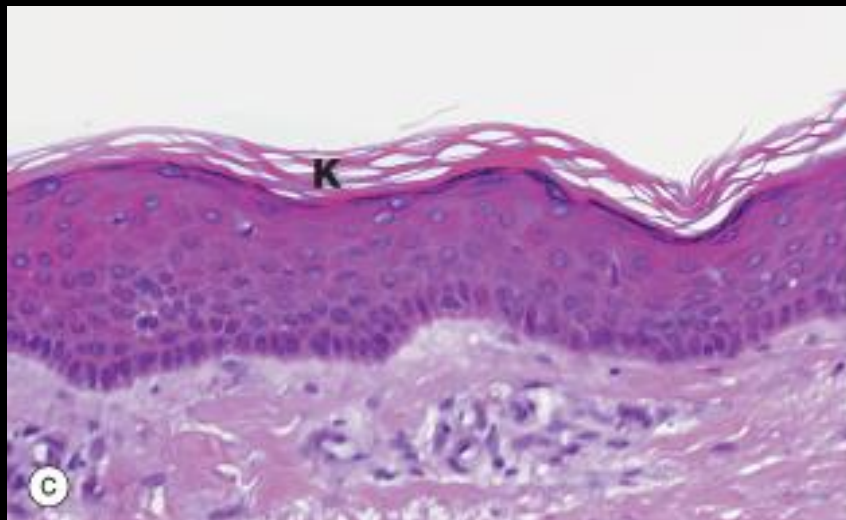
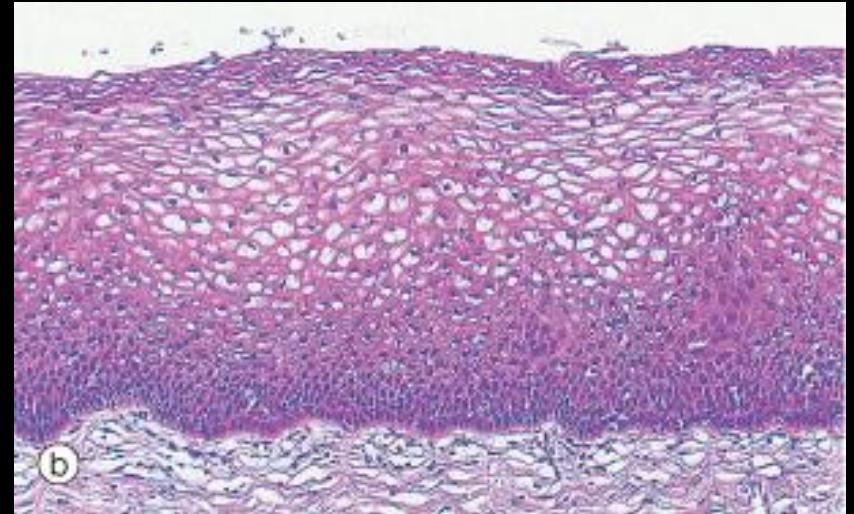
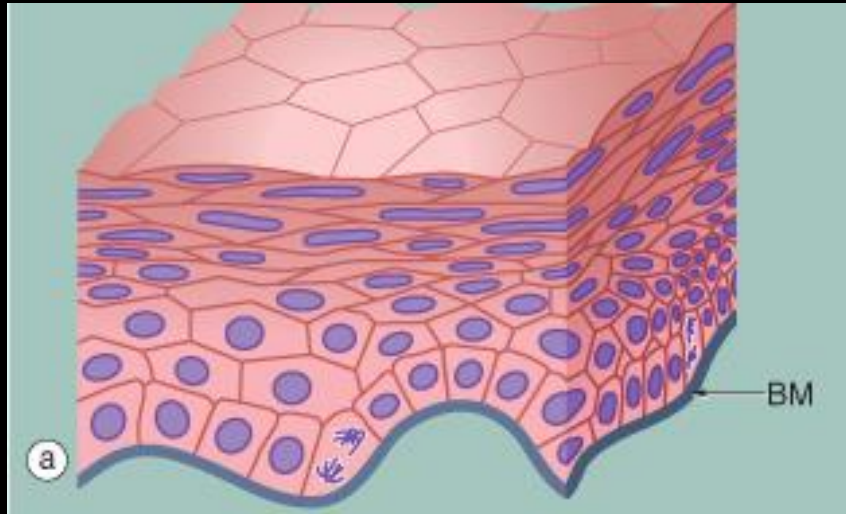


# ***Épithélium pavimenteux stratifié***

- Cellules basales cuboïdes (couche germinative)
- Résistance physique, à l'abrasion
- Épithéliums muqueux (humides):
  - Voies aéro-digestives et génitales féminines
- Épithélium résistant à la dessiccation:
  - Peau: kératinisation, couche cornée

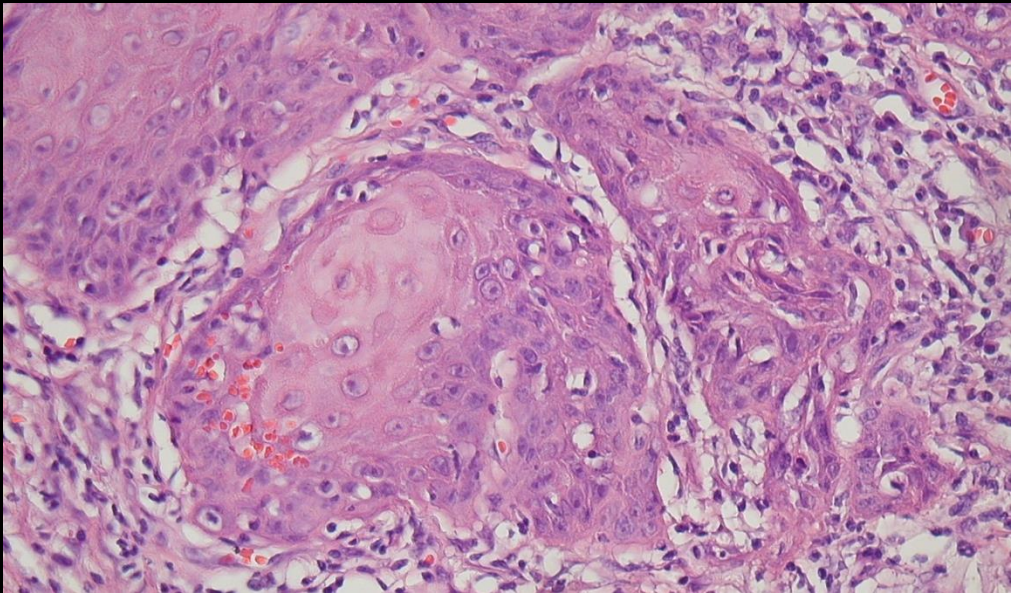
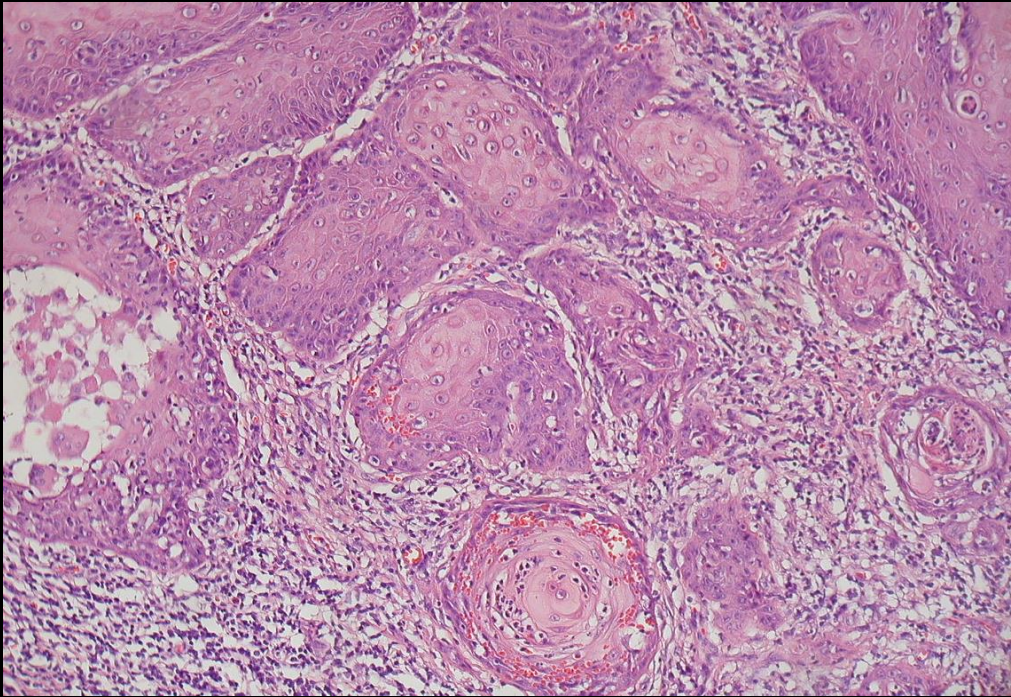


# Épithélium pavimenteux pluristratifié





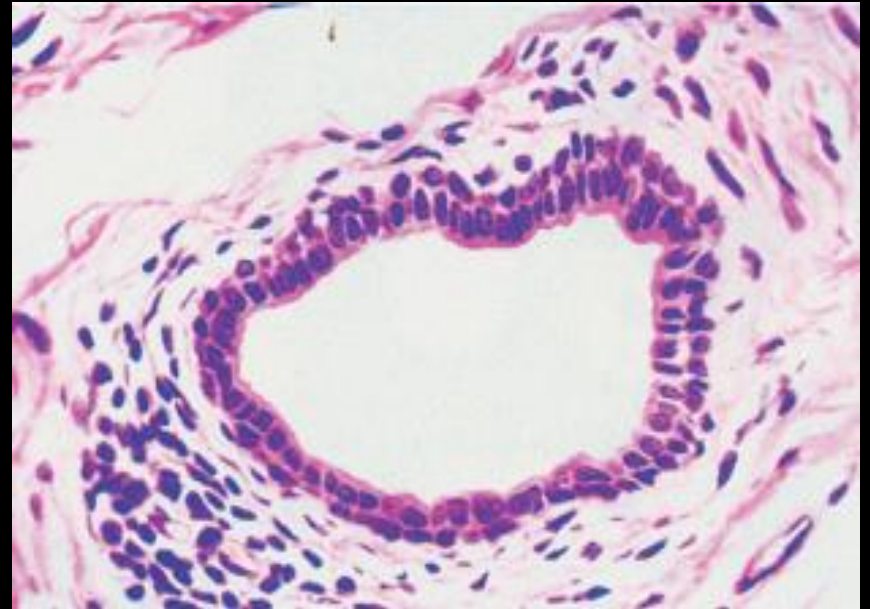
***Carcinome épidermoïde  
kératinisant***





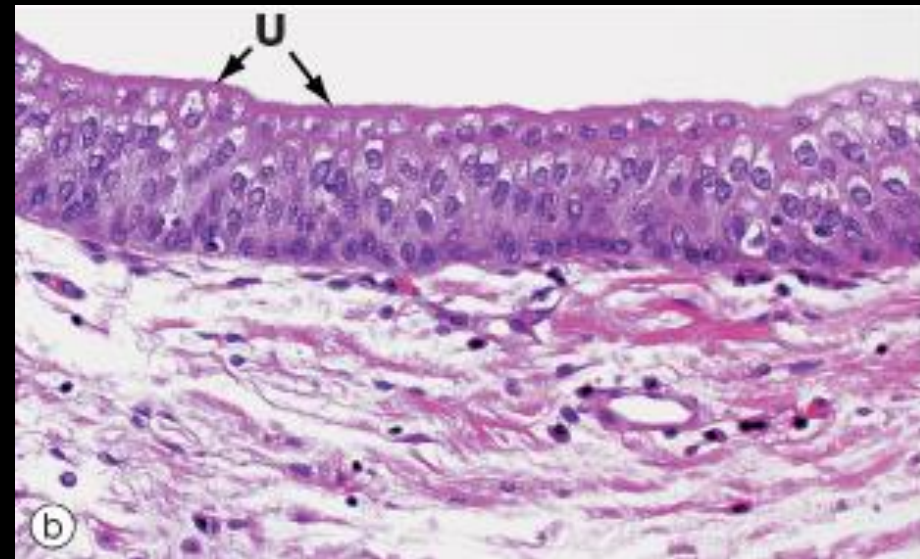
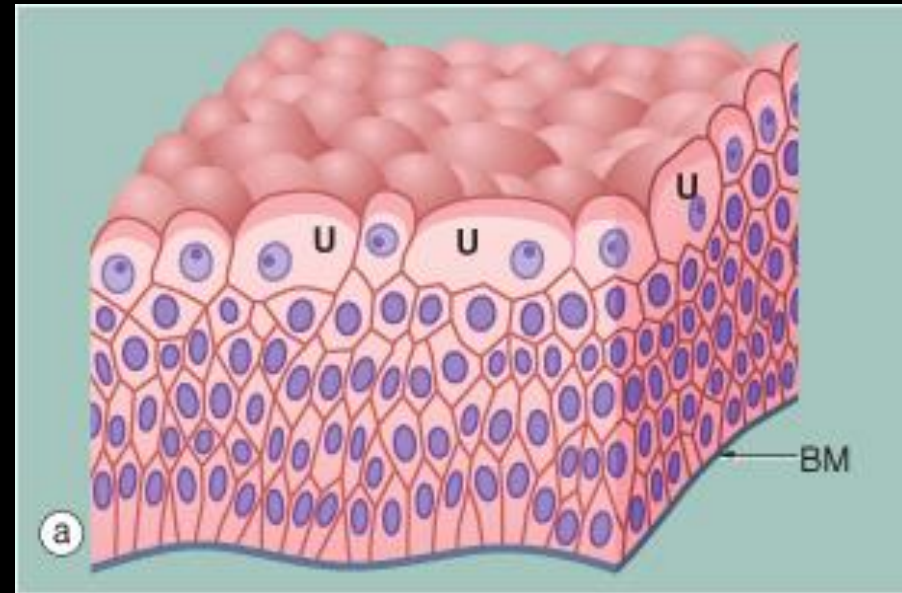
# *Épithélium cubique stratifié*

- Deux ou trois couches de cellules cubiques
- Canaux excréteurs de glandes exocrines



# Épithélium transitionnel (Urothélium)

- Cellules basales cuboïdes
- Cellules en ombrelles
- Pole apical épais



Réalisation

Gérard ABADJIAN

Beyrouth

Le 7 Février 2007

Copy Prohibited ®

of a database is the record. A record is a collection of related data treated as a single entity. For example, a hockey trading card could be called a record: it brings together the name, photograph, team, and statistics of one player. Using database terms, each of these related pieces of information is called a *field*: each card *record* has a name field, field, and various player statistics fields The building block of a database is the record. A record is a\_

This appendix is intended for users who have little or no experience working with databases or database connections. It explains general concepts, not specific procedures. To see how these concepts apply in practice, see the rest of the help system.

This appendix is intended for users who have little or no experience working with databases or database connections. It explains general concepts, not specific procedures. To see how these concepts apply in practice, see the rest of the help system.

This appendix is intended for users who have little or no experience working with databases or database connections. It explains general concepts, not specific procedures. To see how these concepts apply in practice, see the rest of the help system.

This appendix is intended for users who have little or no experience working with databases or database connections. It explains general concepts, not specific procedures. To see how these concepts apply in practice, see the rest of the help system.

**Fin**

**The End**

**Merci**

**de votre attention.**

Are you still trying to read this non sense?