

HISTOLOGIE GÉNÉRALE

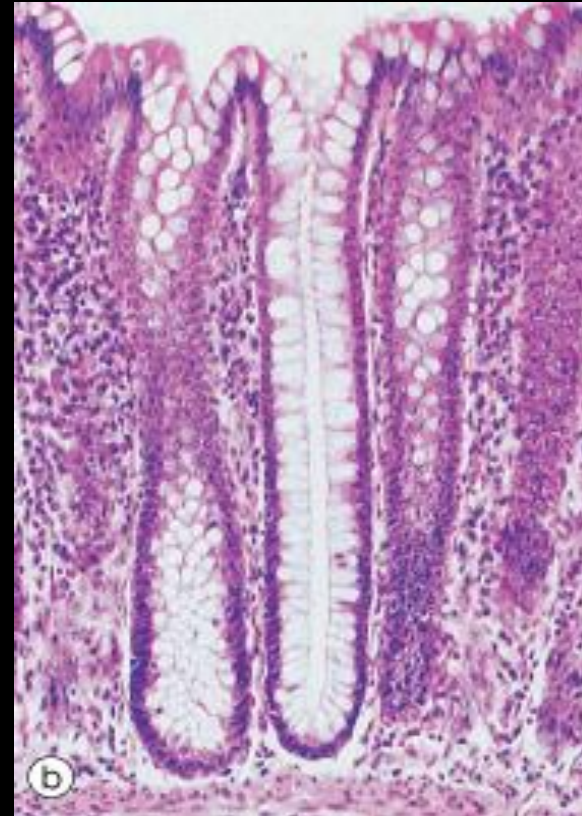
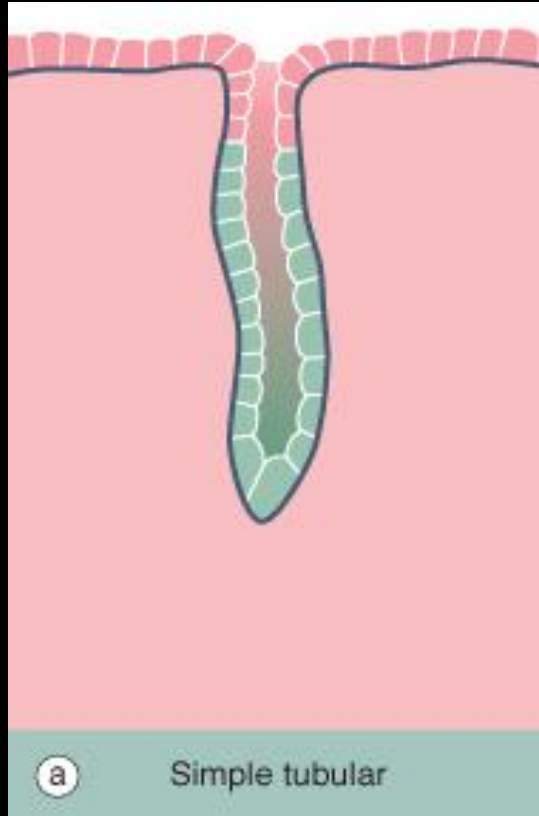
LES ÉPITHÉLIUMS GLANDULAIRES

*Gérard ABADJIAN
Hôtel-Dieu de France
Faculté de Médecine
USJ - 2007*

Epithéliums glandulaires: Glandes Exocrines, Classification

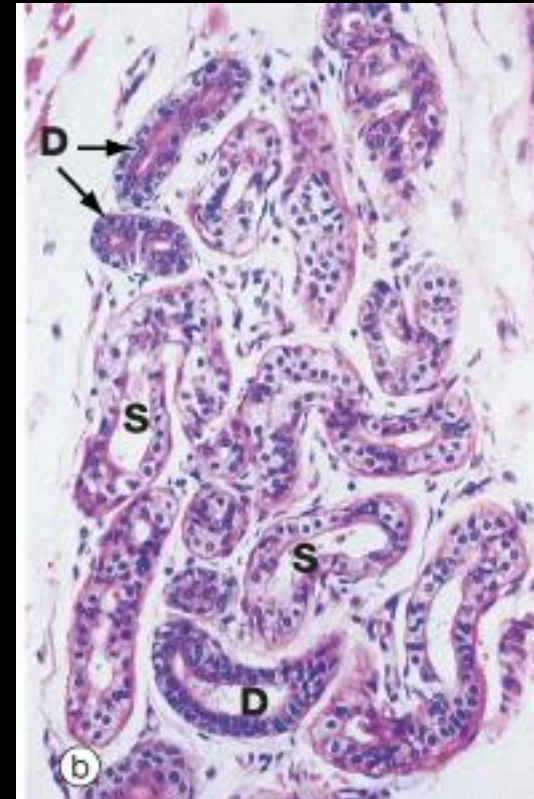
- Morphologique:
 - Composante canalaire:
 - Non ramifié: Glande simple
 - Ramifié: Glande composée
 - Composante sécrétoire:
 - Tubulaire
 - Acineuse
 - » Contournée ou ramifiée
- Fonctionnelle (sécrétion):
 - Mérocrine (eccrine): Exocytose, protéines
 - Apocrine : Vésicules, Lipides
 - Holocrine: Cellules entières.
- Cellules myoépithéliales

Glande tubulaire simple



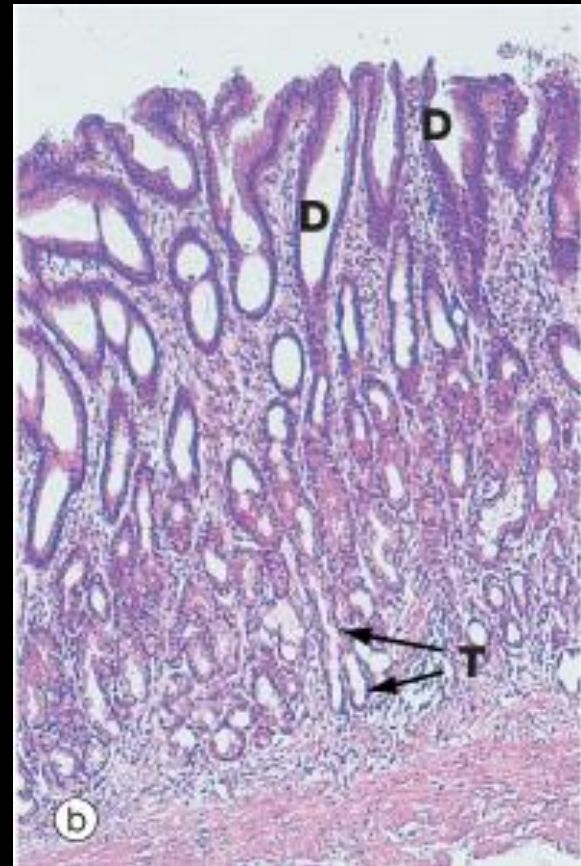
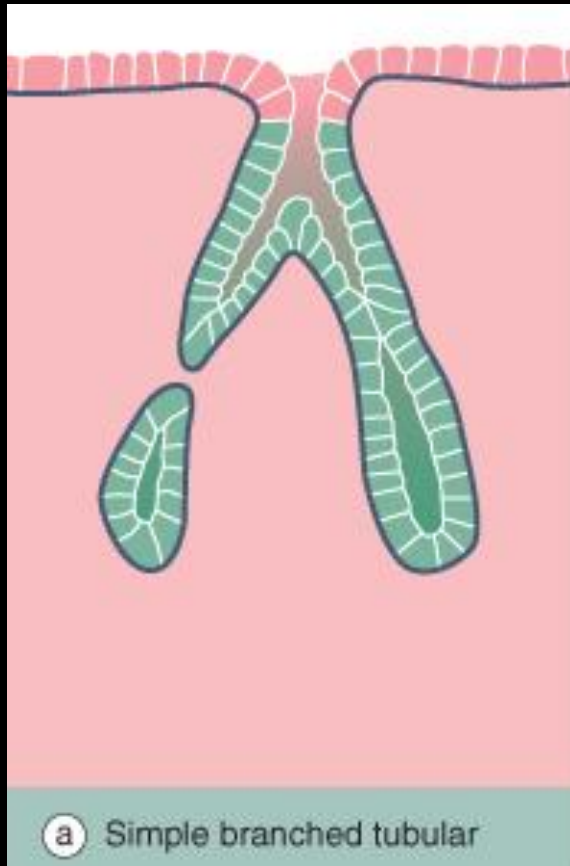
Canal entièrement tapissé de cellules sécrétantes (Colon)

Glande tubulaire simple contournée



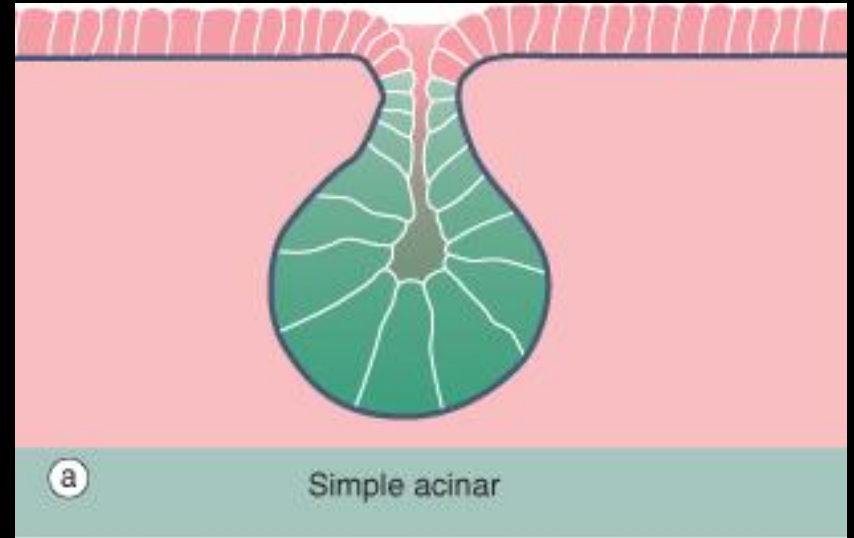
Portion sécrétoire tubulaire, cellules cubiques, et canal excrétoire cubique bistratifié (Glande sudorale)

Glande tubulaire simple ramifiée

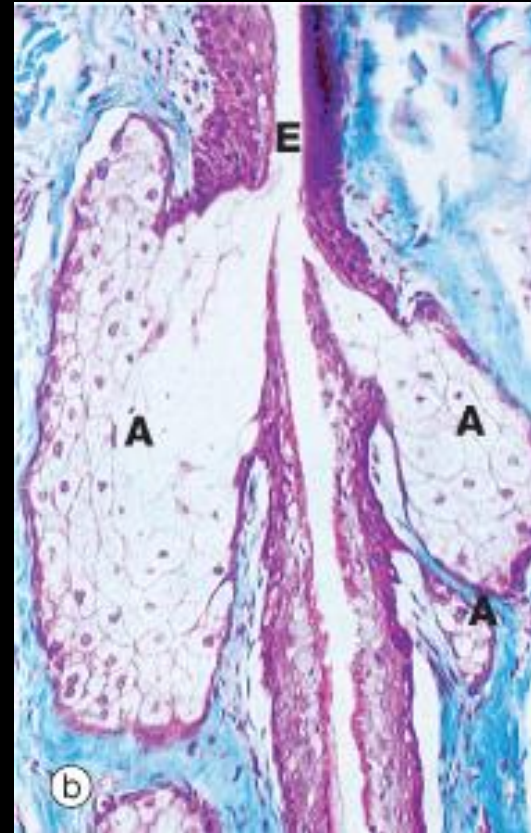
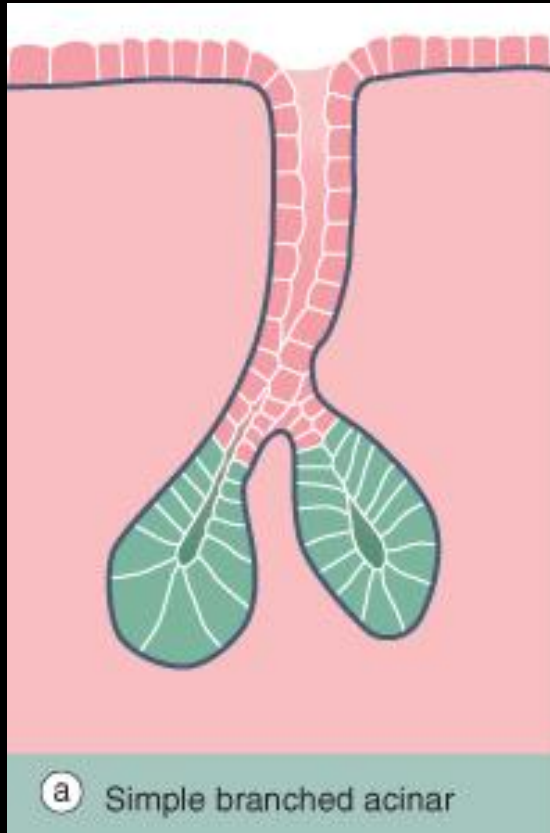


Glande acineuse simple

Repli (invagination) en poche
(urètre pénien)

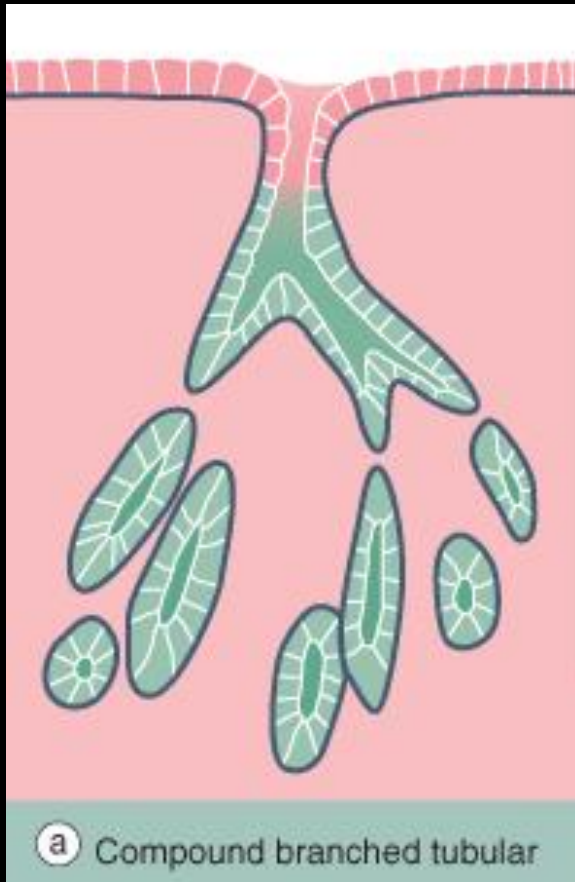


Glande acineuse simple ramifiée



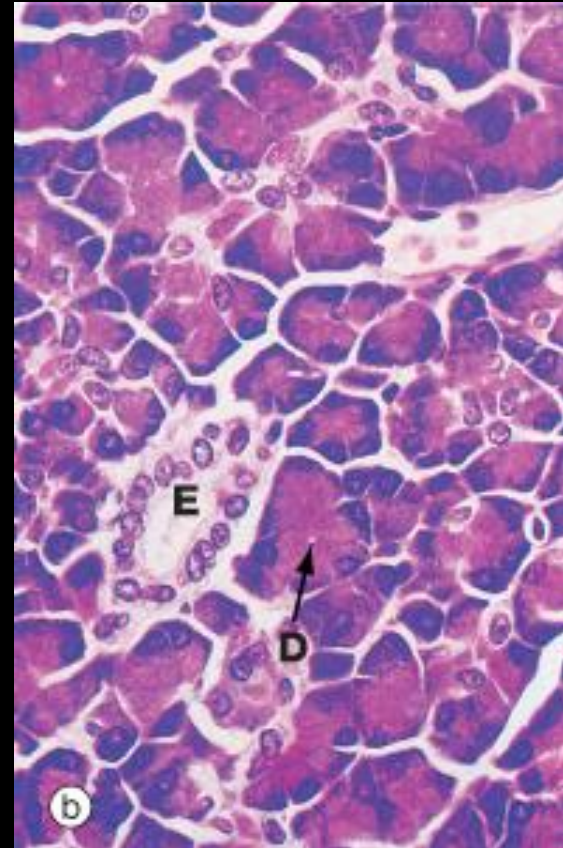
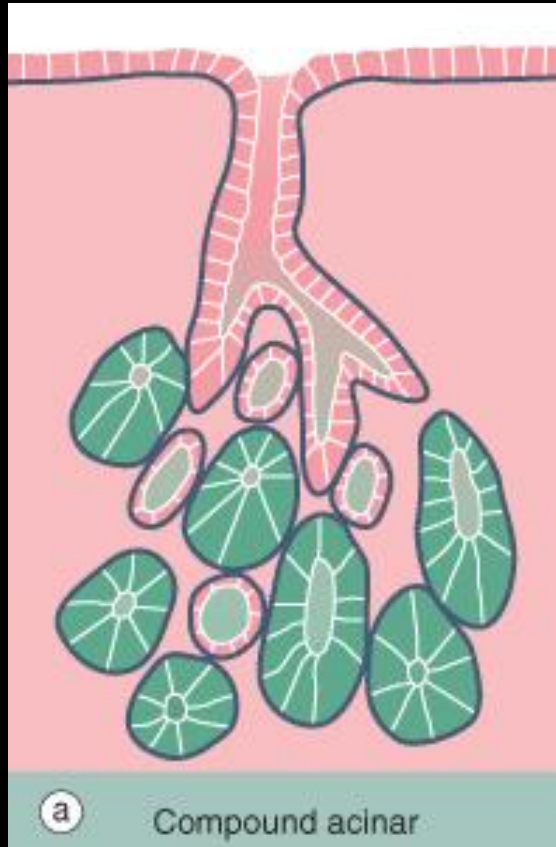
Acini sécrétoires multiples, drainés par un canal excrétoire (Glandes sébacées, gaine pilaire)

Glande tubuleuse ramifiée composée



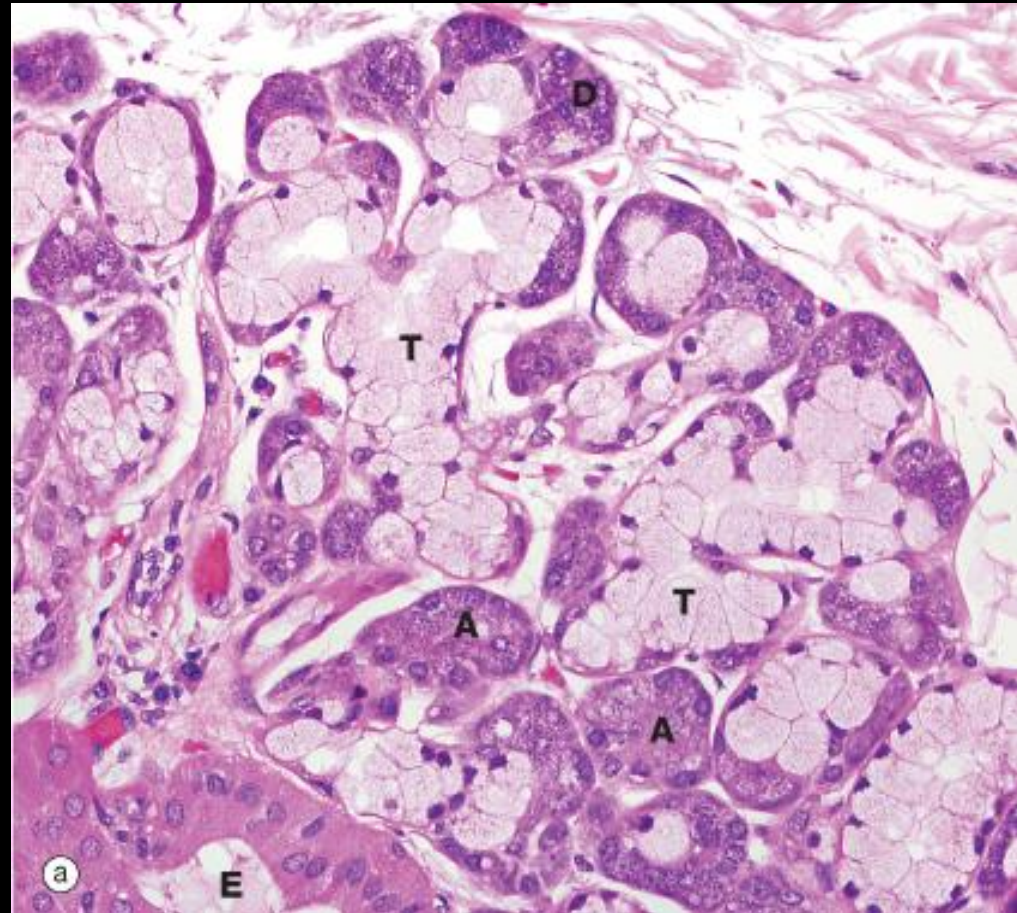
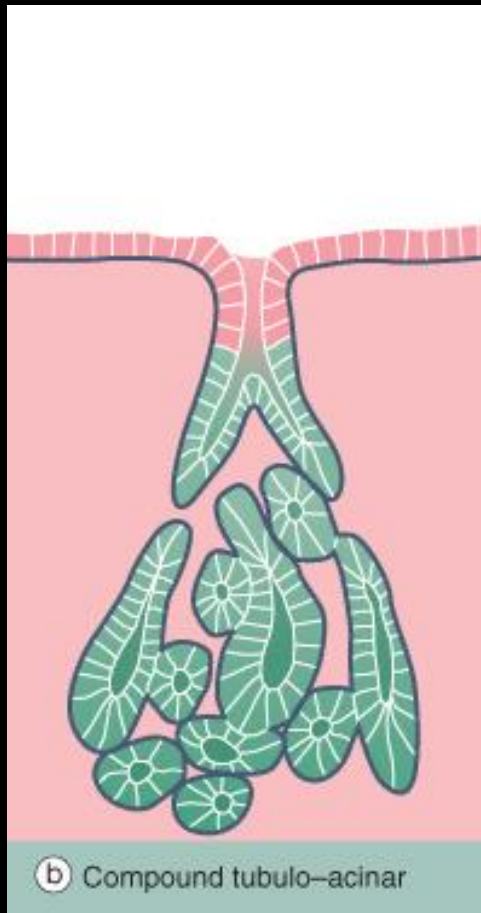
Glandes tubuleuses ramifiées, et contournées (pelotonnées), sur des canaux ramifiés (Glande de Brunner, duodénum)

Glande acineuse composée



Unités sécrétoires acineuses, drainées par des canaux ramifiés
(Pancréas exocrine)

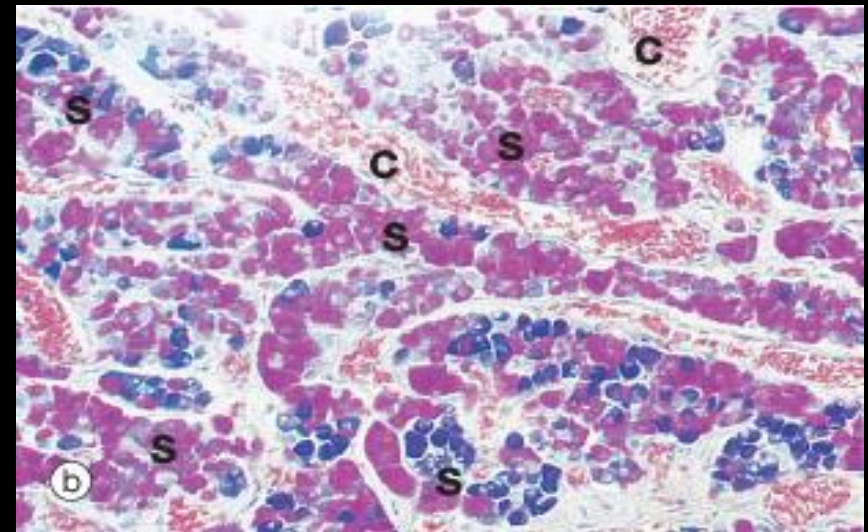
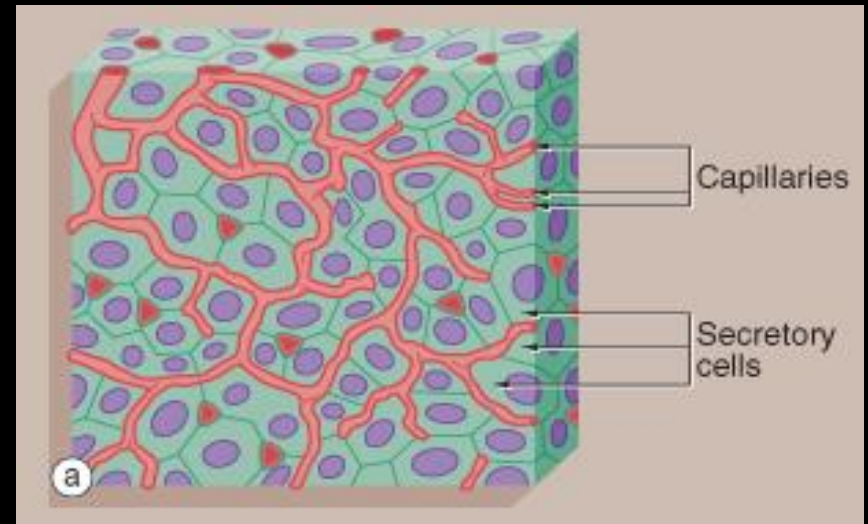
Glande tubulo-acineuse composée



Unités sécrétoires: tubulaires ramifiées, acineuses ramifiées, et tubuleuses ramifiées avec des croissants acineux : sécrétion séro-muqueuse (Glande salivaire sous-maxillaire)

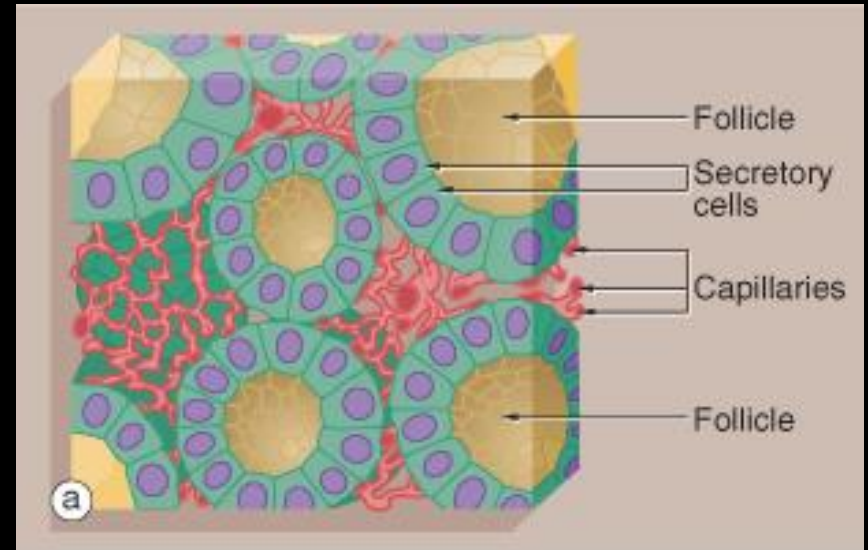
Glande endocrine

- Produits de sécrétion (hormones) directement dans la circulation sanguine.
- Action à distance
- Architecture endocrinoïde:
 - Cellules sécrétantes en amas ou cordons
 - Membrane basale
 - Riche réseau de capillaires
- (Glande hypophyse antérieure)



Glande endocrine folliculaire

- Produit de sécrétion:
thyroxine-thyroglobuline
- Cavité sphérique: follicule
- Produit d'excrétion:
hormones thyroïdiennes
- Capillaires



Réalisation

Gérard ABADJIAN

Beyrouth

Le 7 Février 2007

Copy Prohibited ®

of a database is the record. A record is a collection of related data treated as a single entity. For example, a hockey trading card could be called a record: it brings together the name, photograph, team, and statistics of one player. Using database terms, each of these related pieces of information is called a *field*: each card *record* has a name field, field, and various player statistics fields The building block of a database is the record. A record is a_

This appendix is intended for users who have little or no experience working with databases or database connections. It explains general concepts, not specific procedures. To see how these concepts apply in practice, see the rest of the help system.

This appendix is intended for users who have little or no experience working with databases or database connections. It explains general concepts, not specific procedures. To see how these concepts apply in practice, see the rest of the help system.

This appendix is intended for users who have little or no experience working with databases or database connections. It explains general concepts, not specific procedures. To see how these concepts apply in practice, see the rest of the help system.

This appendix is intended for users who have little or no experience working with databases or database connections. It explains general concepts, not specific procedures. To see how these concepts apply in practice, see the rest of the help system.

Fin

The End

Merci

de votre attention.

Are you still trying to read this non sense?